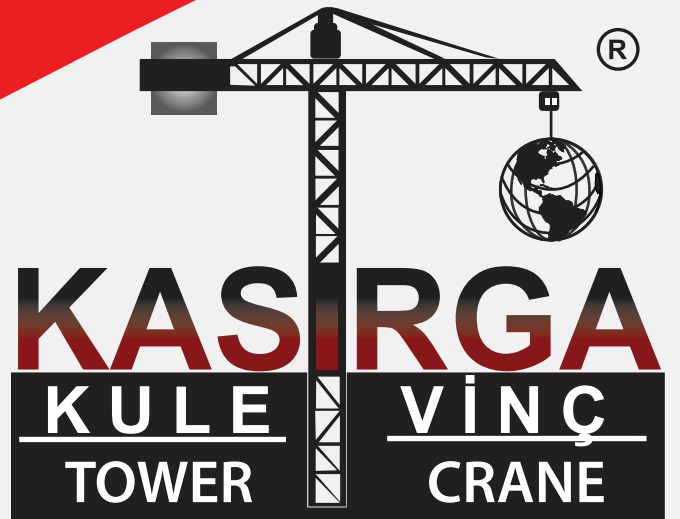


İnşaat'ta  
Yükünüzü Hafifletir



Lighten Your Load  
In Construction

[www.kasirgakulevinc.com](http://www.kasirgakulevinc.com)  
[www.discepheplatformu.com](http://www.discepheplatformu.com)



KASIRGA KULE VİNÇ; Müşterilerine kalite odaklı hizmet sunmayı ve müşteri memnuniyet ilkesini amaç edinmiştir. Hedefimiz müşteriye yönelik değerler yaratmak ve en iyi hizmeti sunmaktır.

KASIRGA KULE VİNÇ; Kurucusu ve yönetim kurulu başkanı Sayın Hasan KASIRGA' nın 2003 yılında inşaat sektöründe kule vinç üzerine teknik servis hizmeti verecek firma eksikliğini hissederek çıkmış olduğu yolda 2019 yılı itibari ile Kule vinç satışı, Kule vinç kiralaması ve Kule vinç teknik servis hizmeti veren bir firma olarak yoluna devam etmektedir. Hasan KASIRGA 31 yıllık iş tecrübesi ve sürekli kendisini geliştiren iş anlayışının yanında iş hayatında da yapılan her şeyin İnsan için yapıldığı ve bu doğrultuda yapılabilenin en iyisini yapmak gerektiğini yaşam felsefesi haline getirmiştir.

KASIRGA KULE VİNÇ; Hasan KASIRGA'nın önderliğinde kaliteli ve işinin ehli olan yönetim kadrosu ve Kule vinç konusunda uzmanlaşmış teknik personeli ile Türkiye de ve Dünya da Kule vinç sektöründe marka olmayı başarmıştır. Teknik servis hizmeti vermek için çıkılan bu yolda yapılan hizmetlerin hem Türkiye de hem de Dünyanın çeşitli bölgelerinde KASIRGA KULE VİNÇ ile çalışmış yüzlerce müşterimiz tarafından takdir edilmesi ve Güvenilir bir firma olarak kabul edilmesi Firma olarak sorumluluğumuzu daha da artırmıştır. Bu doğrultuda kendi markamız olan KASIRGA' nın dışında Türkiye de ve Dünyanın herhangi bir bölgesinde farklı marka Kule vinç kullanan müşterilerimiz için Kule vinç yedek parçası üretimine de başlayarak çalışmalarımıza devam ediyoruz.

KASIRGA KULE VİNÇ; olarak kule vinç üzerine İmalat, satış kiralama ve teknik servis hizmetlerimizin yanında yine inşaat sektörüne yönelik inşaat dış cephe asansörü ve inşaat dış cephe çalışma platformu satışı ve kiralaması yaparak çalışmalarımıza devam ediyoruz.

Amacımız müşterilerimize kaliteli ürünleri uygun fiyata satmak ve ülkemize de bu doğrultuda katkı sağlamak olduğundan ucuz iş gücünden kaynaklı olarak kaliteden ödün vermeden üretim ve tedariklerimizin bir çoğunu Çin de yapmamıza rağmen özellikle Türkiye ve yakın bölgesinde kullanılacak ve sayı olarak az ve Çin den gelme sürecinde zaman kaybı olması sebebi ile aciliyet gerektiren parçaları İstanbul da bulunan fabrikamızda üretimini yapıyoruz.

KASIRGA KULE VİNÇ olarak kurulduğumuz günden bu yana yaklaşık 14 yıllık süreçte yakaladığımız başarının insana olan saygımız ve bu doğrultudaki iş disiplini içinde çok çalışmamızdan kaynaklandığını söyleyebiliriz. KASIRGA ailesine katılarak yeni dostluklar edineceğimiz daha önce bizim ile çalışmamış olan ve bu yazıyı okuyarak değerli zamanını bize ayıran ilgili firmanın değerli yöneticisi sizin ile de en kısa sürede çalışmayı umut eder işlerinizde başarılar diliyoruz.

Saygılarımızla  
Kasirga Kule Vinç Ailesi

*KASIRGA TOWER CRANE; aims to provide quality-oriented service to its customers and customer satisfaction. Our goal is to provide the best service to the customer. In 2003, our founder Hasan Kasirga felt the shortcomings in the crane area in the construction sector and set out on this path. As of 2019, it continues to operate as a company providing crane sales, crane leasing and technical service.*

*In addition to 31 years of work experience, Hasan Kasirga has developed himself and adopted the philosophy that business life is all for human beings.*

*Our company has become a brand in the crane sector in Turkey and the world with its high quality staff and expert technical team under the leadership of Hasan Bey.*

*Our company, which works with customers from many parts of the world, has been appreciated by the customers. Thus, our responsibility as a company has increased more. Our company also manufactures crane parts for our customers using different brand crane used in Turkey and the world. Our company is also engaged in sales and leasing of exterior lift, exterior working platform for the construction sector.*

*Our goal is to sell quality products to our customers at an affordable price and contribute to our country. Although we do most of our production and supply in China, we produce a small number of parts that require urgency to be used especially in Turkey and its environs in our factory in Istanbul.*

*Our company owes its success, which has been 14 years since its inception, to human respect and business discipline.*

*As Kasirga family, we hope to work together by forming new friendships and wish you success in your work.*

*KASIRGA family with regards.*

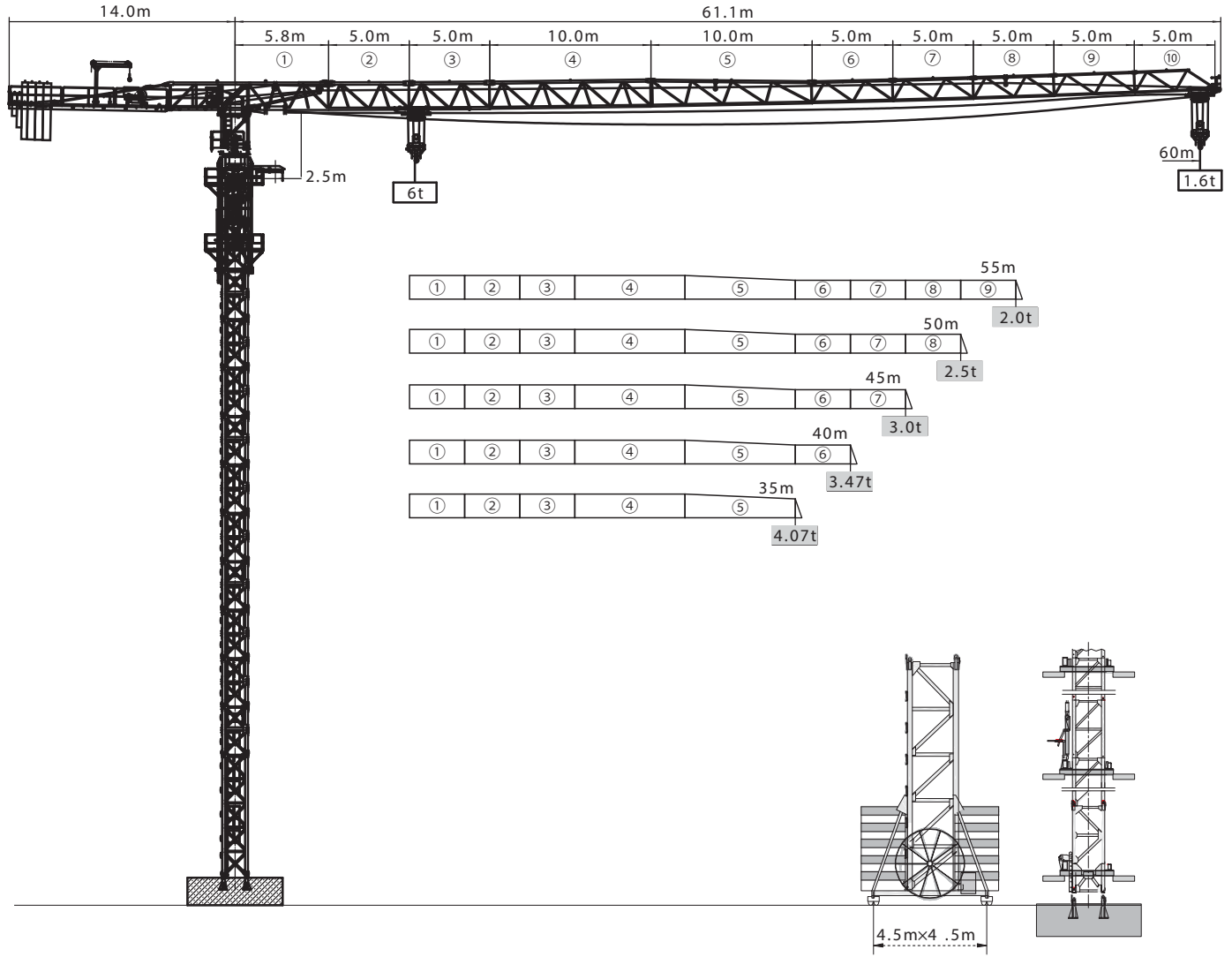
## FLAT-TOP KULE VİNÇLER

## FLAT-TOP TOWER CRANES



Model	Maksimum Yükseklik	Serbest Yüksekliği	Bom Uzunluğu	Maksimum Kapasitesi	Bom Ucu Kapasitesi
<i>Model</i>	<i>Max. Height</i>	<i>Free Standing Height</i>	<i>Jib Lenth</i>	<i>Max. Capacity</i>	<i>Jib End Capacity</i>
QP6016-6	182.8 m	49.5 m	60 m	6.000 kg	1.600 kg
QP6016-8	182.8 m	49.5 m	60 m	8.000 kg	1.600 kg
QP6513-8	182.8 m	49.5 m	65 m	8.000 kg	1.300 kg
QP6515-8	200.8 m	61.8 m	65 m	8.000 kg	1.500 kg
QP6515-10	200.8 m	61.8 m	65 m	10.000 kg	1.500 kg
QP7020-12	200.8 m	61.8 m	70 m	12.000 kg	2.000 kg
QP7527-12	207.7 m	53.7 m	75 m	12.000 kg	2.700 kg
QP7527-16	207.7 m	53.7 m	75 m	16.000 kg	2.700 kg
QP7532-20	225.7 m	55.7 m	75 m	20.000 kg	3.200 kg
QP8030-20	226.9 m	78.0 m	80 m	20.000 kg	3.000 kg

## FLAT TOP QP6016-6 6T



### YÜK DİYAGRAMLARI

### LOAD DIAGRAMS

Bom (m) Jib (m)	Kanca Fall	Radüs (m) Range (m)	2.5- 20.9	25	30	35	37.8	40	45	50	55	60
60	IV	Load (t)	6	4.85	3.87	3.18	2.87	2.66	2.26	1.94	1.69	1.47
	II		3			2.79	2.39	2.07	1.82	1.6		

Jib (m)	Fall	Range (m)	2.5- 22.4	25	30	35	40	40.5	45	50	55
55	IV	Load (t)	6	5.26	4.21	3.47	2.92	2.87	2.49	2.15	1.87
	II		3			2.62	2.28	2			

Jib (m)	Fall	Range (m)	2.5- 24	25	30	35	40	43.4	45	50
50	IV	Load (t)	6	5.71	4.59	3.79	3.2	2.87	2.74	2.37
	II		3			2.87	2.5			

Jib (m)	Fall	Range (m)	2.5- 24.8	25	30	35	40	45
45	IV	Load (t)	6	5.96	4.79	3.96	3.35	2.87
	II		3					

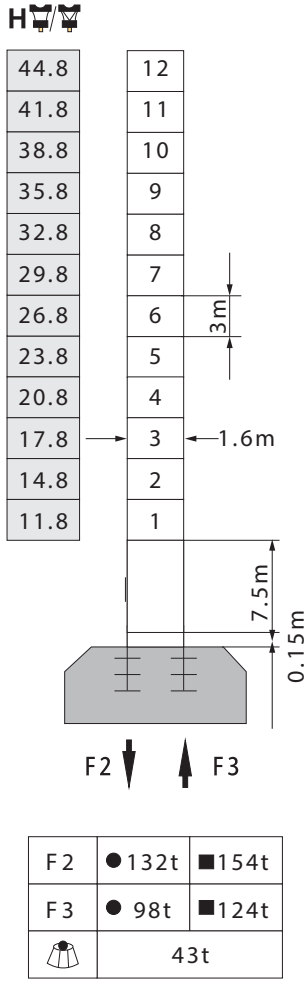
Jib (m)	Fall	Range (m)	2.5- 25.5	30	35	40
40	IV	Load (t)	6	4.95	4.1	3.47
	II		3			

Jib (m)	Fall	Range (m)	2.5- 25.5	30	35
35	IV	Load (t)	6	4.92	4.07
	II		3		

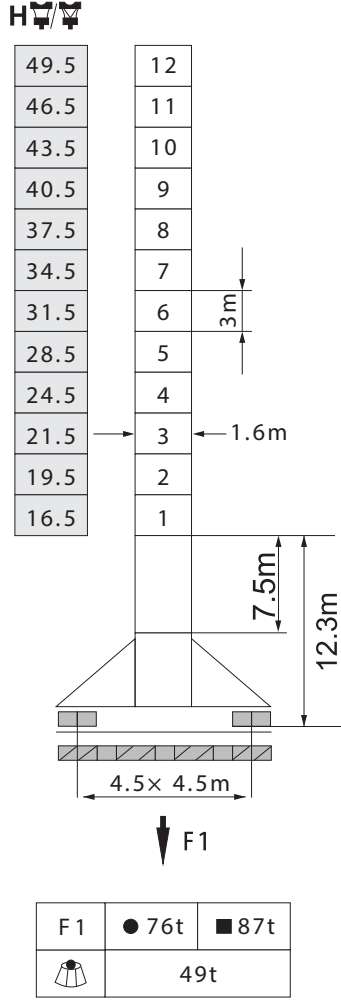
## MAST 1.6 X 1.6

## MAST 1.6 X 1.6

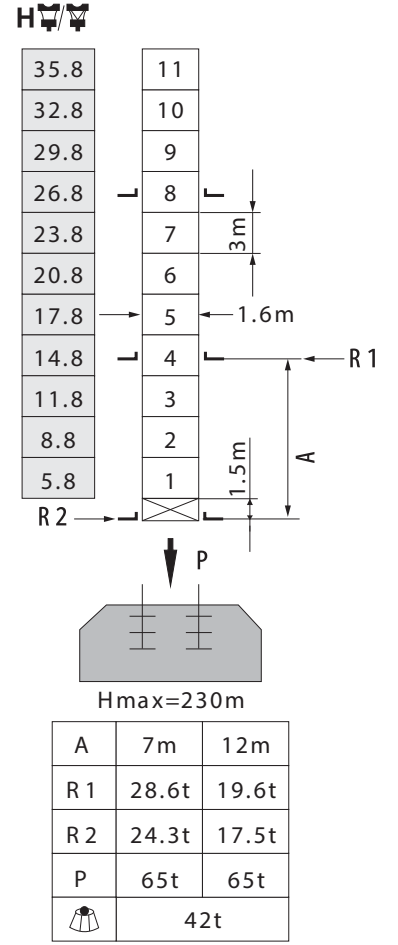
### Statik Stationary



### Yürüçüslü Travelling



### Bina İçi Tırmanma Inner climbing

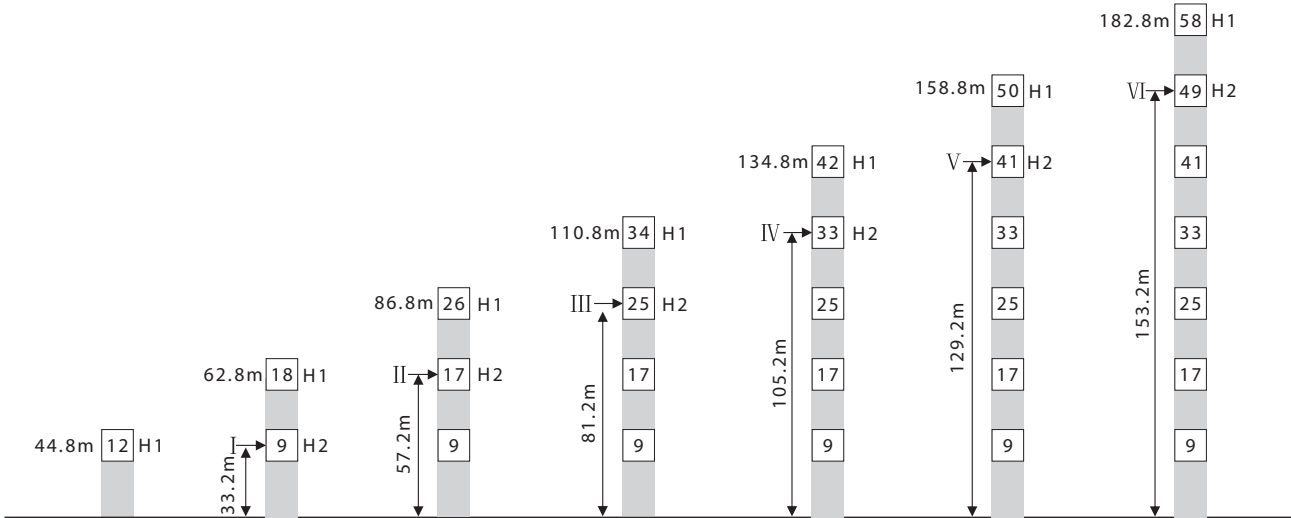


- Serviste In service
- Servis Dışı Out of service

- F = Tepkime Reactions
- Yük ve kuyruk taşı hariç toplam ağırlık Total weight without load and counter weight

## BAĞLANTI

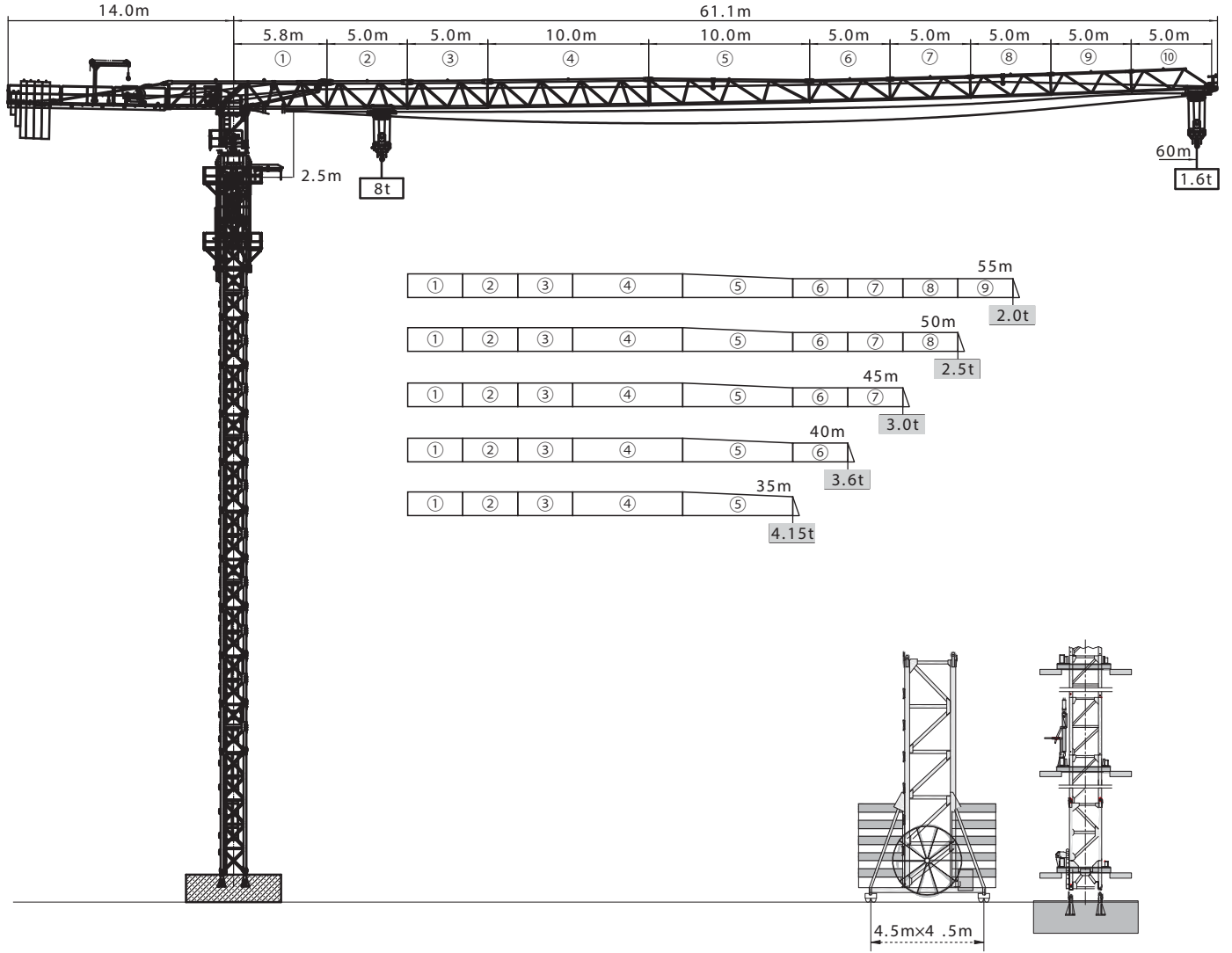
## ANCHORAGE



H1 - Kanca Altı Yükseklik Height under hook

H2 - Bağlantı Çerçevesinin Zemine Olan Yüksekliği Height of anchorage frame to the ground

## FLAT TOP QP6016-8 8T



### YÜK DİYAGRAMLARI

### LOAD DIAGRAMS

Bom (m) Jib (m)	Kanca Fall	Radüs (m) Range (m)	2.5- 16.4	20	25	30	35	40	45	50	55	60
60	IV	Load (t)	8	6.35	4.85	3.86	3.17	2.65	2.25	1.93	1.67	1.45
	II		4	3.32	2.8	2.4	2.08	1.82	1.6			

Jib (m)	Fall	Range (m)	2.5- 17.5	20	25	30	35	40	45	50	55
55	IV	Load (t)	8	6.86	5.26	4.2	3.46	2.9	2.47	2.13	1.85
	II		4	3.61	3.05	2.62	2.28	2			

Jib (m)	Fall	Range (m)	2.5- 18.7	20	25	30	35	40	45	50
50	IV	Load (t)	8	7.43	5.71	4.58	3.78	3.18	2.72	2.35
	II		4	3.93	3.33	2.87	2.5			

Jib (m)	Fall	Range (m)	2.5- 19.4	20	25	30	35	40	45
45	IV	Load (t)	8	7.73	5.95	4.78	3.95	3.33	2.85
	II		4	3.48	3				

Jib (m)	Fall	Range (m)	2.5- 19.9	20	25	30	35	40
40	IV	Load (t)	8	7.98	6.15	4.94	4.09	3.45
	II		4	3.6				

Jib (m)	Fall	Range (m)	2.5- 20.2	25	30	35
35	IV	Load (t)	8	6.24	5.01	4.15
	II		4			

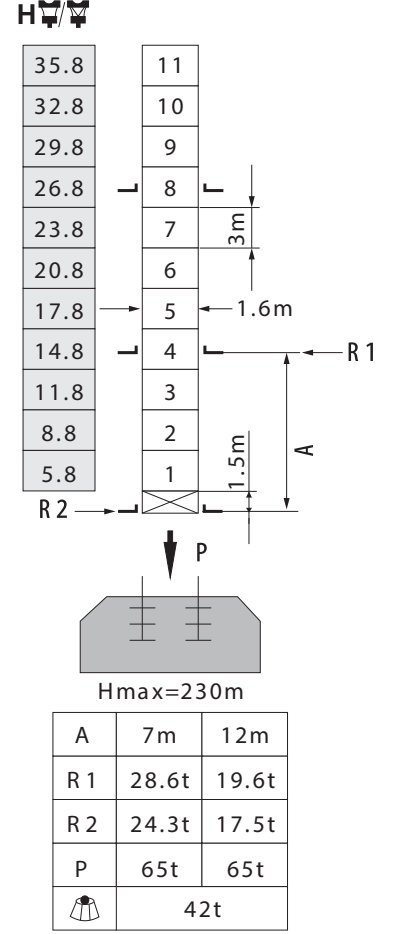
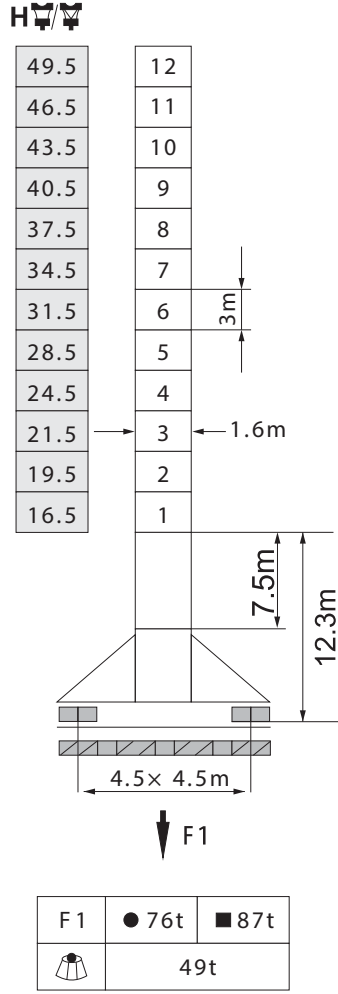
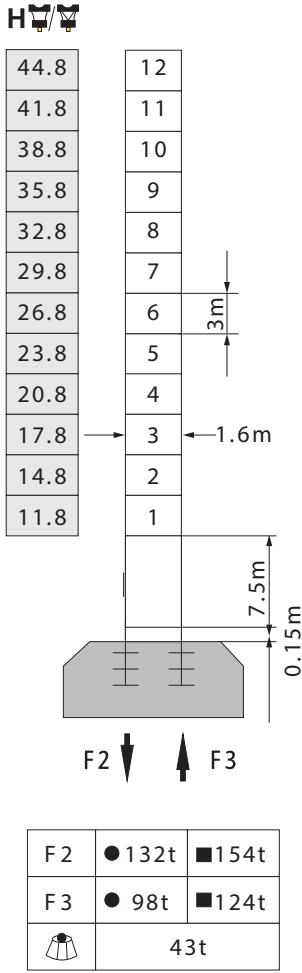
## MAST 1.6 X 1.6

## MAST 1.6 X 1.6

**Statik**  
Stationary

**Yürüğüşlü**  
Travelling

**Bina İçi Tırmanma**  
Inner climbing

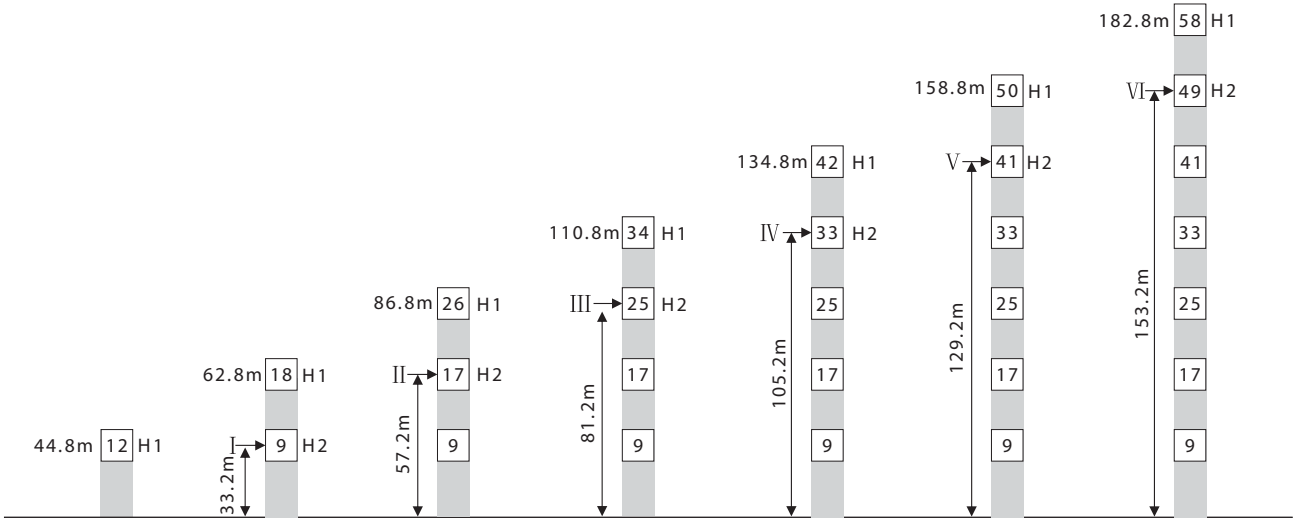


- **Serviste** In service
- **Servis Dışı** Out of service

- F = **Tepkime** Reactions
- **Yük ve kuyruk taşı hariç toplam ağırlık**  
Total weight without load and counter weight

## BAĞLANTI

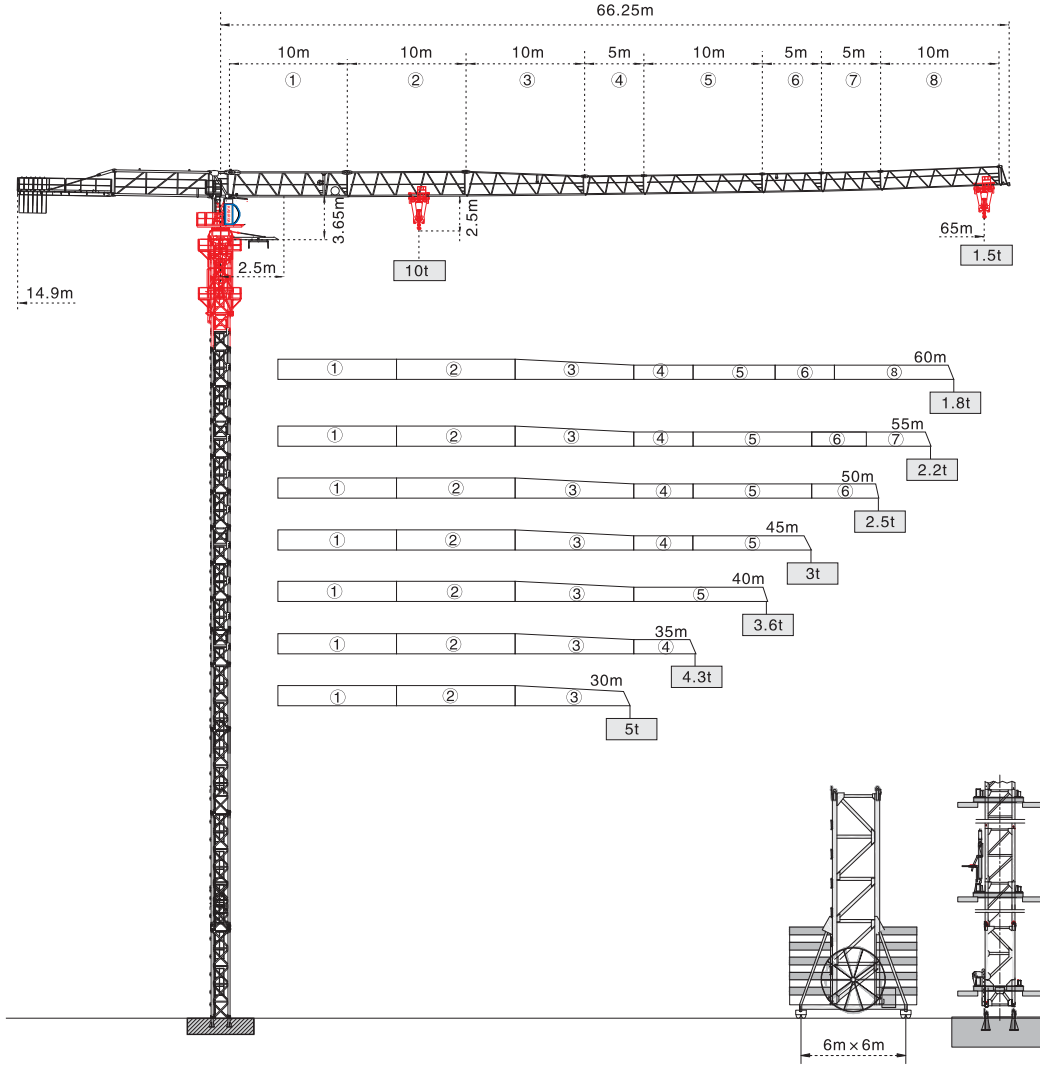
## ANCHORAGE



H1 - **Kanca Altı Yükseklik** Height under hook

H2 - **Bağlantı Çerçevesinin Zemine Olan Yüksekliği** Height of anchorage frame to the ground

## FLAT TOP QP6515-10 10T



### YÜK DİYAGRAMLARI

### LOAD DIAGRAMS

Bom (m) Jib (m)	Kanca Fall	Radüs (m) Range (m)	2.5-15.5	25	28.6	35	40	45	50	55	60	65
65	IV	Load (t)	10	5.38	4.5	3.45	2.82	2.36	1.98	1.66	1.46	1.3
	II		5			3.65	3.02	2.56	2.18	1.86	1.66	1.5
60	IV	Load (t)	10	5.69	4.8	3.67	3.04	2.56	2.18	1.86	1.6	
	II		5			3.87	3.24	2.76	2.38	2.06	1.8	
55	IV	Load (t)	10	6	4.81	3.89	3.24	2.73	2.33	2		
	II		5			4.09	3.44	2.93	2.53	2.2		
50	IV	Load (t)	10	6.05	4.8	3.85	3.2	2.7	2.3			
	II		5			4.05	3.4	2.9	2.5			
45	IV	Load (t)	10	6.13	4.8	3.98	3.31	2.8				
	II		5			4.18	3.51	3				
40	IV	Load (t)	10	6.24	4.88	4.03	3.4					
	II		5			4.23	3.6					
35	IV	Load (t)	10	6.35	4.96	4.1						
	II		5			4.3						
30	IV	Load (t)	10	6.46	5							
	II		5									



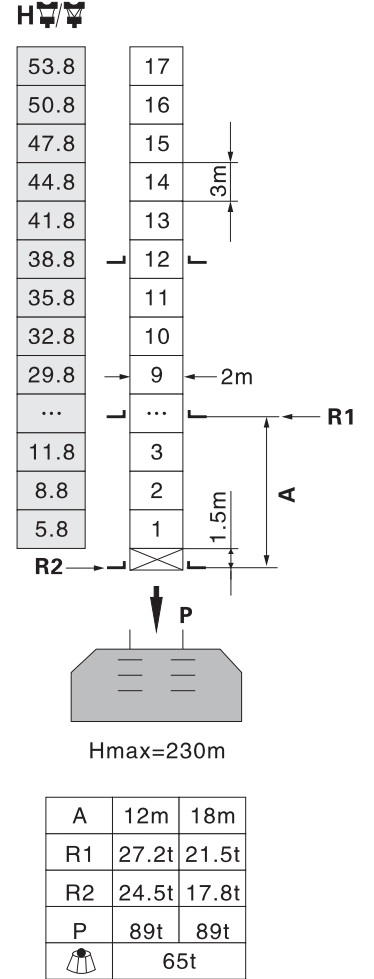
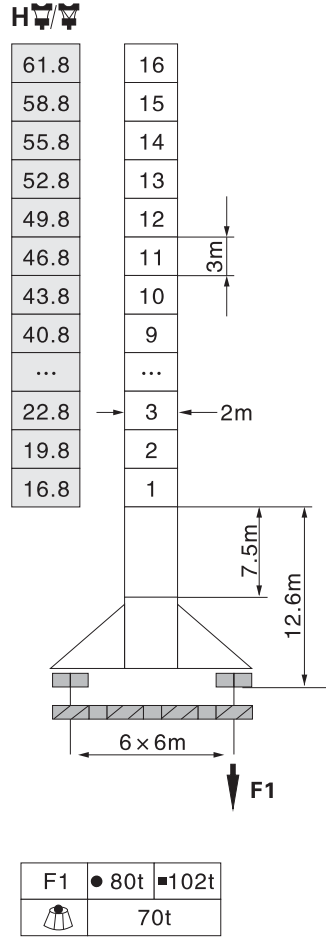
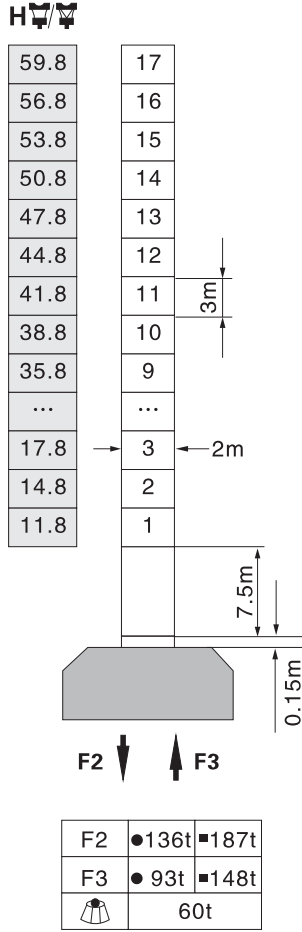
## MAST 2 X 2

## MAST 2 X 2

**Statik**  
Stationary

**Yürüyüşlü**  
Travelling

**Bina İçi Tırmanma**  
Inner climbing



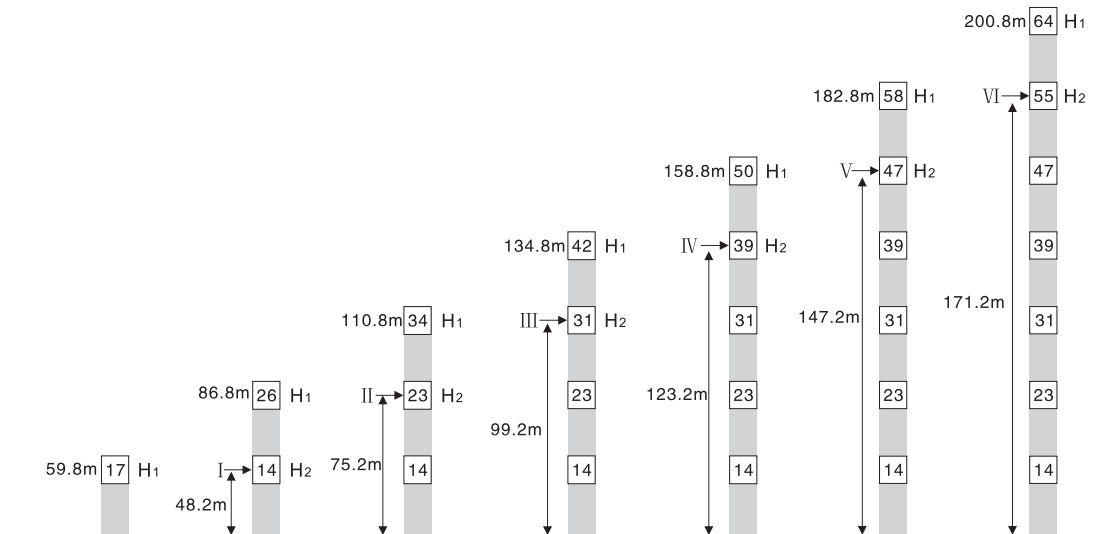
- Serviste In service
- Servis Dışı Out of service

F = Tepkime Reactions

Yük ve kuyruk taşı hariç toplam ağırlık  
Total weight without load and counter weight

## BAĞLANTI

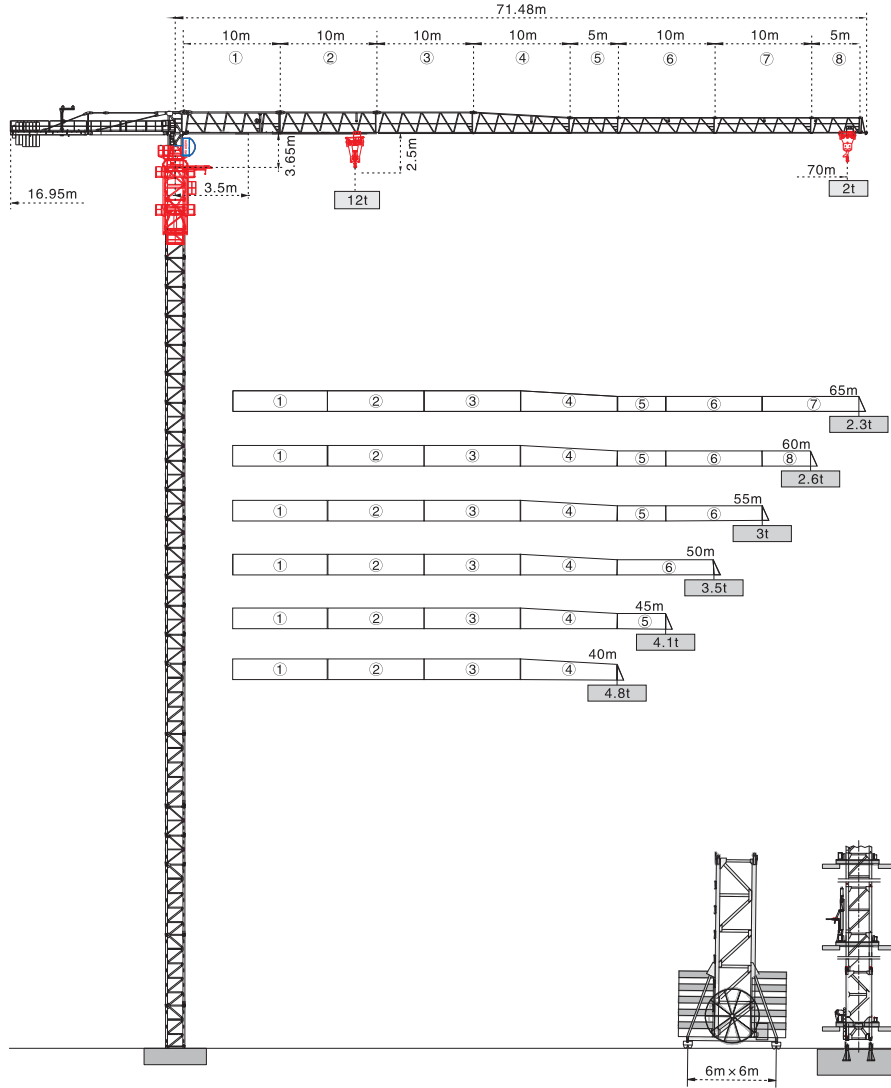
## ANCHORAGE



H1 - Kanca Altı Yükseklik Height under hook

H2 - Bağlantı Çerçevesinin Zemine Olan Yüksekliği Height of anchorage frame to the ground

## FLAT TOP QP7020-12 12T



### YÜK DİYAGRAMLARI

### LOAD DIAGRAMS

Bom (m) Jib (m)	Kanca Fall	Radüs (m) Range (m)	3.5-16.1	20	25	30	35	37.2	40	45	50	55	60	65	70
70	IV	Load (t)	12	9.39	7.21	5.77	4.76	4.35	4	3.42	2.95	2.57	2.25	1.99	1.76
	II		6	5	4.59	4.24	3.66	3.19	2.81	2.49	2.23	2			
65	IV	Load (t)	12	9.63	7.4	5.93	4.89	4.42	4.12	3.52	3.04	2.66	2.33	2.06	
	II		6	5.13	4.66	4.36	3.76	3.28	2.9	2.57	2.3				
60	IV	Load (t)	12	9.71	7.46	5.99	4.94	4.42	4.16	3.56	3.08	2.69	2.36		
	II		6	5.18	4.18	4.4	3.8	3.32	2.93	2.6					
55	IV	Load (t)	12	9.92	7.63	6.12	5.06	4.66	4.26	3.65	3.16	2.76			
	II		6	5.3	4.9	4.5	3.89	3.4	3						
50	IV	Load (t)	12	10.18	7.83	6.29	5.2	4.39	3.76	3.26					
	II		6	5.44	4.63	4	3.5								
45	IV	Load (t)	12	10.41	8.02	6.44	5.33	4.5	3.86						
	II		6	5.57	4.74	4.1									
40	IV	Load (t)	12	10.53	8.11	6.52	5.4	4.56							
	II		6	5.64	4.8										

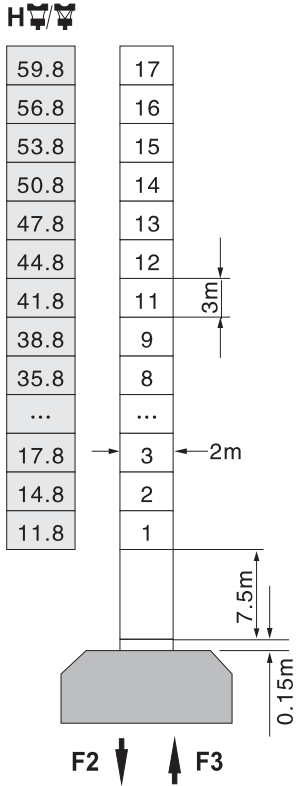
## MAST 2 X 2

## MAST 2 X 2

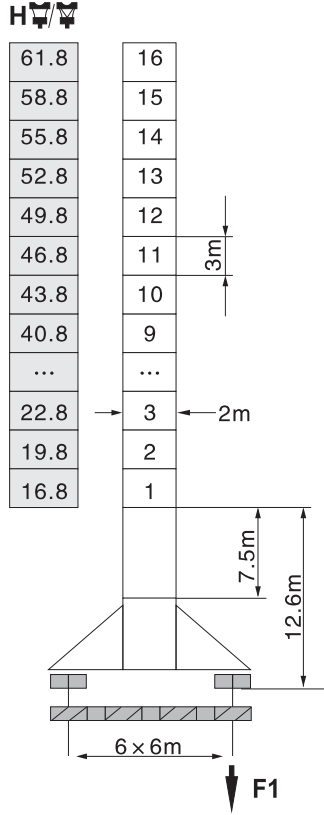
**Statik**  
Stationary

**Yürüğüşlü**  
Travelling

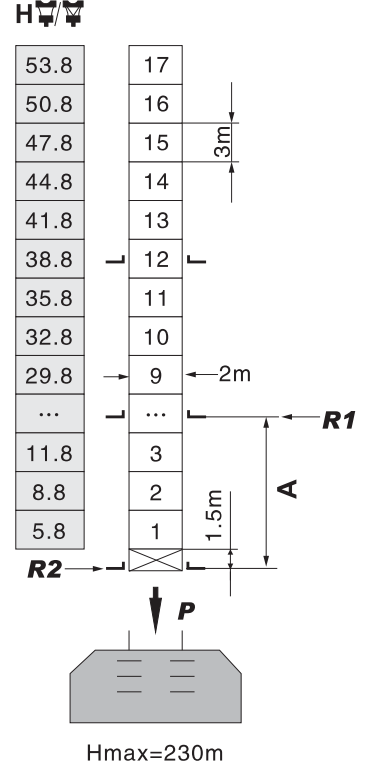
**Bina İçi Tırmanma**  
Inner climbing



F2	● 142t	■ 195t
F3	● 97t	■ 152t
	65t	



F1	● 86t	■ 108t
	76t	



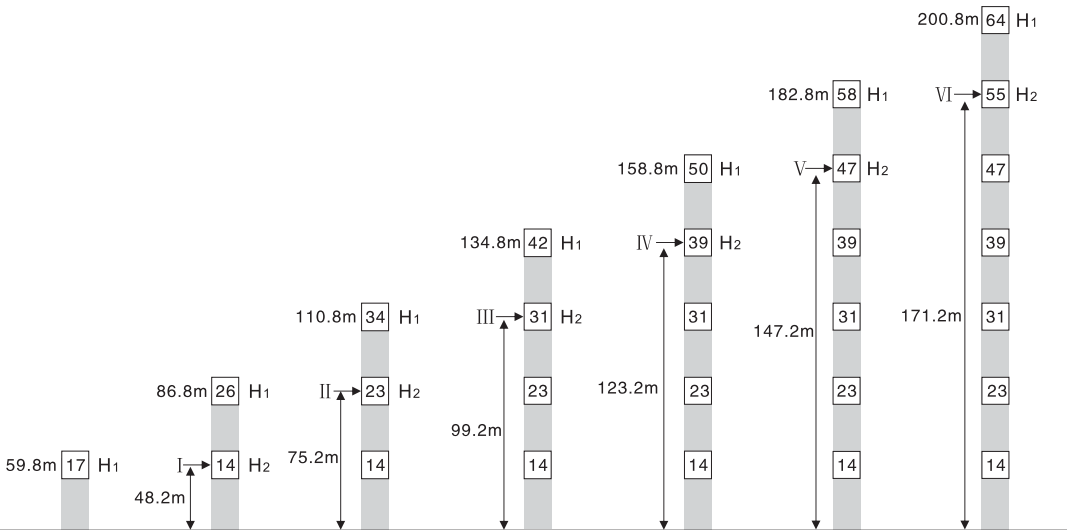
A	12m	18m
R1	27.2t	21.5t
R2	24.5t	17.8t
P	89t	89t
	70t	

- **Serviste** In service
- **Servis Dışı** Out of service

F = **Tepkime** Reactions  
 ● **Yük ve kuyruk taşı hariç toplam ağırlık**  
 Total weight without load and counter weight

## BAĞLANTI

## ANCHORAGE



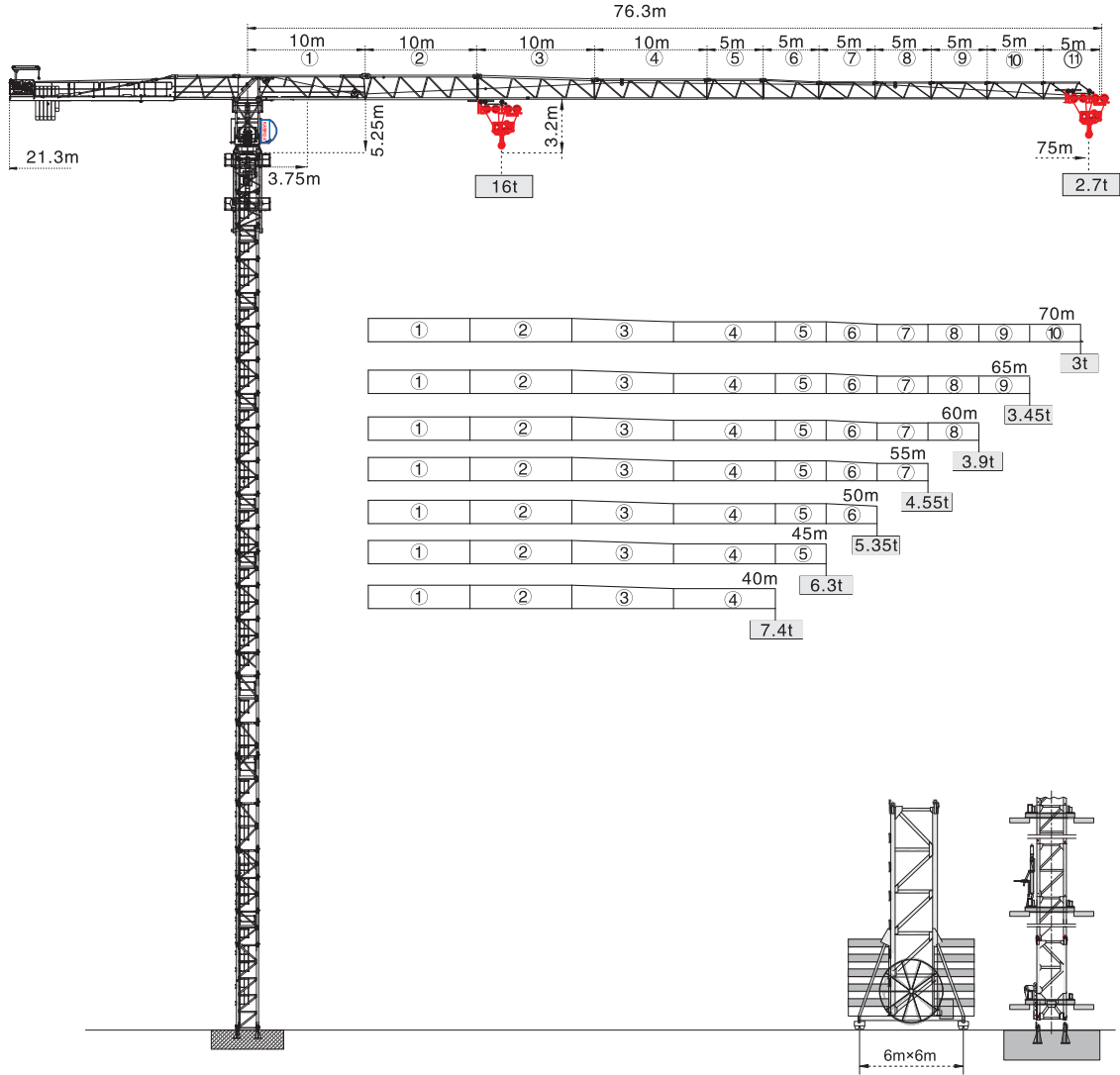
H1 - **Kanca Altı Yükseklik** Height under hook

H2 - **Bağlantı Çerçevesinin Zemine Olan Yüksekliği** Height of anchorage frame to the ground





## FLAT TOP QP7527-16 16T



### YÜK DİYAGRAMLARI

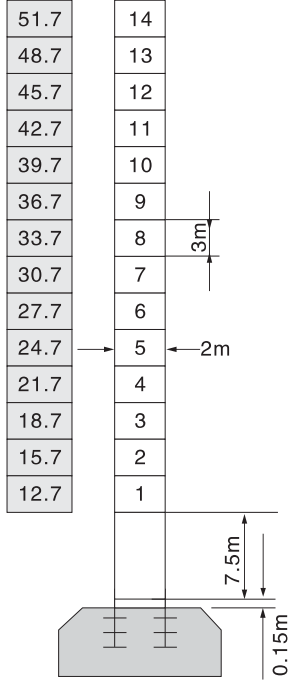
### LOAD DIAGRAMS

Bom (m) Jib (m)	Kanca Fall	Radüs (m) Range (m)	3.75-15.5	20	25	29.6	30	35	40	45	50	55	60	65	70	75
75	IV	Load (t)	16	11.78	8.96	7.22	7.11	5.8	4.84	4.09	3.49	3.01	2.6	2.26	1.97	1.92
	II		8	7.89	6.58	5.62	4.87	4.27	3.79	3.38	3.04	2.75	2.7			
70	IV	Load (t)	16	12.68	9.67	7.7	7.22	6.31	5.28	4.48	3.84	3.32	2.89	2.53	2.22	
	II		8	7.09	6.06	5.26	4.62	4.1	3.67	3.31	3					
65	IV	Load (t)	16	13.15	10.05	8.01	7.22	6.57	5.5	4.68	4.02	3.49	3.05	2.67		
	II		8	7.35	6.28	5.46	4.8	4.27	3.83	3.45						
60	IV	Load (t)	16	13.39	10.23	8.17	7.22	6.7	5.62	4.78	4.11	3.57	3.12			
	II		8	7.48	6.4	5.56	4.89	4.35	3.9							
55	IV	Load (t)	16	14	10.68	8.54	7.14	6.89	5.03	4.33	3.77					
	II		8	6.67	5.81	5.11	4.55									
50	IV	Load (t)	16	14.57	11.16	8.94	7.22	6.19	5.29	4.57						
	II		8	6.97	6.07	5.35										
45	IV	Load (t)	16	11.59	9.29	7.66	6.45	5.52								
	II		8	7.23	6.3											
40	IV	Load (t)	16	11.86	9.51	7.86	7.22	6.62								
	II		8	7.4												

## MAST 2 X 2

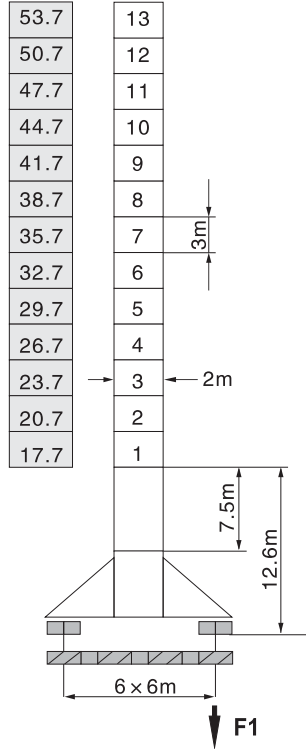
## MAST 2 X 2

### Statik Stationary



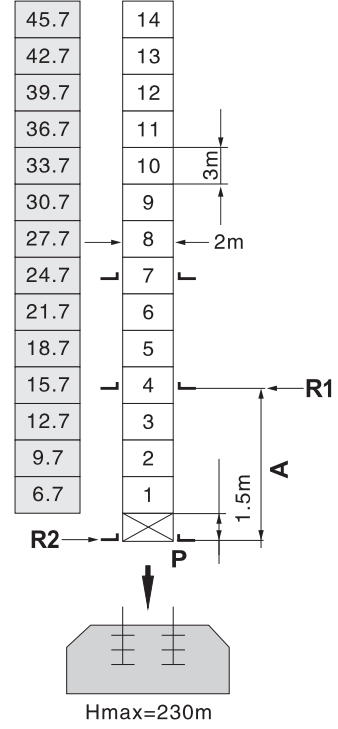
F2	● 218t	■ 243t
F3	● 164t	■ 186t
	79t	

### Yürüyüşlü Travelling



F1	● 165t	■ 182t
	90t	

### Bina İçi Tırmanma Inner climbing



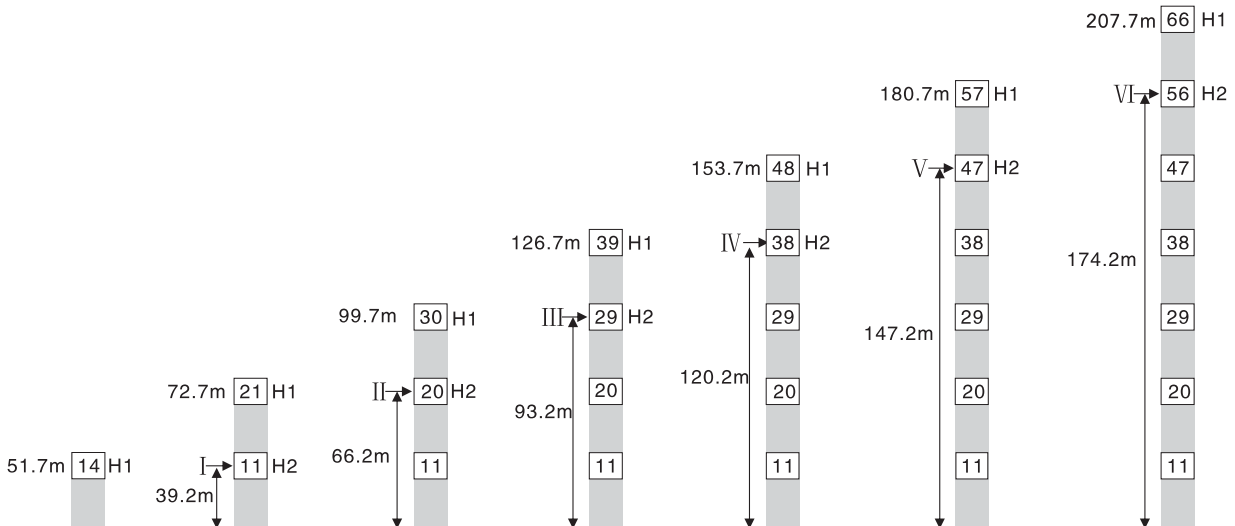
A	7m	12m
R1	36.8t	25.6t
R2	31.6t	23.1t
P	116t	116t
	84t	

- Serviste In service
- Servis Dışı Out of service

- F = Tepkime Reactions
- Yük ve kuyruk taşı hariç toplam ağırlık Total weight without load and counter weight

## BAĞLANTI

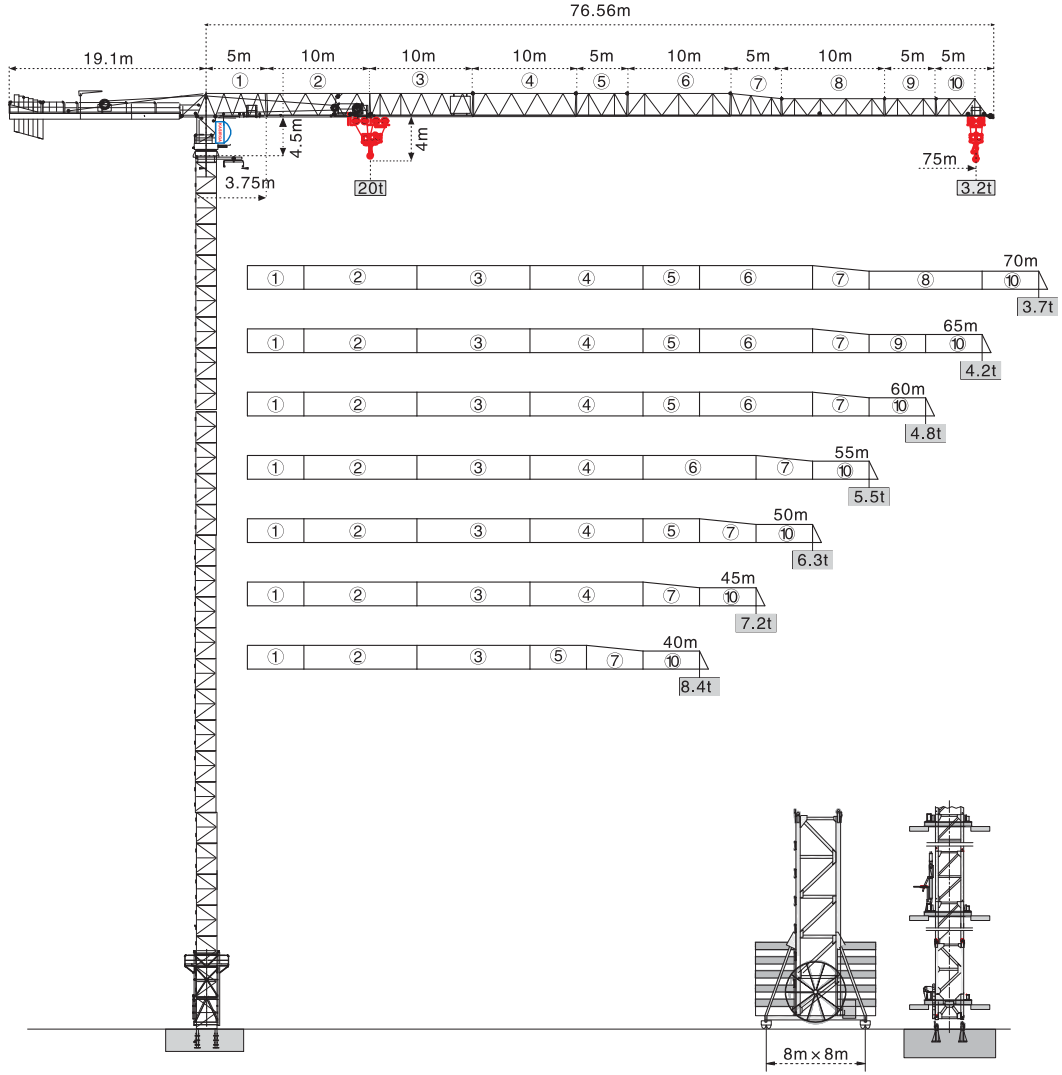
## ANCHORAGE



H1 - Kanca Altı Yükseklik Height under hook

H2 - Bağlantı Çerçevesinin Zemine Olan Yüksekliği Height of anchorage frame to the ground

## FLAT TOP QP7532-20 20T



### YÜK DİYAGRAMLARI

### LOAD DIAGRAMS

Bom (m) Jib (m)	Kanca Fall	Radüs (m) Range (m)	3.75-15.71	20	25	30	35	40	45	50	55	60	65	70	75
75m	IV	Load (t)	20	15.04	11.5	9.18	7.54	6.32	5.63	5.38	4.02	3.51	3.08	2.72	2.4
	II		10				8.34	7.12	6.43	6.18	4.82	4.31	3.88	3.52	3.2
70m	IV	Load (t)	3.75-16.28	20	25	30	35	40	45	50	55	60	65	70	
	II		20	15.71	12.03	9.2	7.91	6.64	5.67	4.89	4.25	3.72	3.28	2.9	
65m	IV	Load (t)	3.75-16.63	20	25	30	35	40	45	50	55	60	65		
	II		20	16.11	12.35	9.2	8.14	6.84	5.84	5.04	4.39	3.85	3.4		
60m	IV	Load (t)	3.75-17.03	25	30	35	40	45	50	55	60				
	II		20	12.7	9.2	8.39	7.06	6.03	5.22	4.55	4				
55m	IV	Load (t)	3.75-17.38	25	30	35	40	45	50	55					
	II		20	13.03	9.2	8.62	7.26	6.22	5.38	4.7					
50m	IV	Load (t)	3.75-17.65	25	30	35	40	45	50						
	II		20	13.28	9.2	8.79	7.41	6.35	5.5						
45m	IV	Load (t)	3.75-17.76	25	30	35	40	45							
	II		20	13.37	9.2	8.86	7.47	6.4							
40m	IV	Load (t)	3.75-17.98	25	30	35	40								
	II		20	13.58	9.2	9.01	7.6								

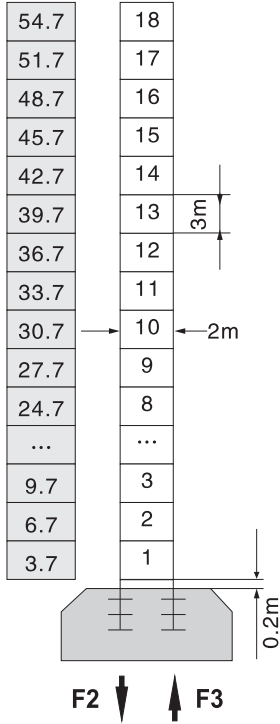


## MAST 2 X 2

## MAST 2 X 2

**Statik**  
Stationary

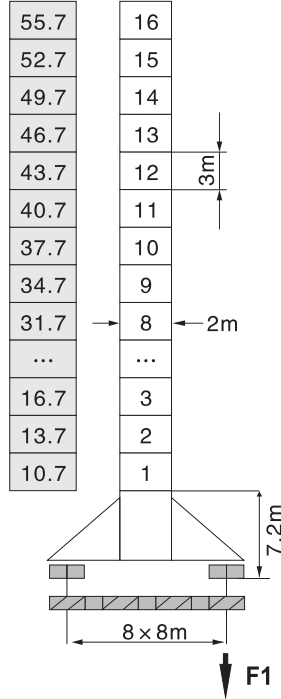
H<sub>1</sub>/V<sub>1</sub>



F2	● 236t	■ 258t
F3	● 179t	■ 206t
	95t	

**Yürüğüşlü**  
Travelling

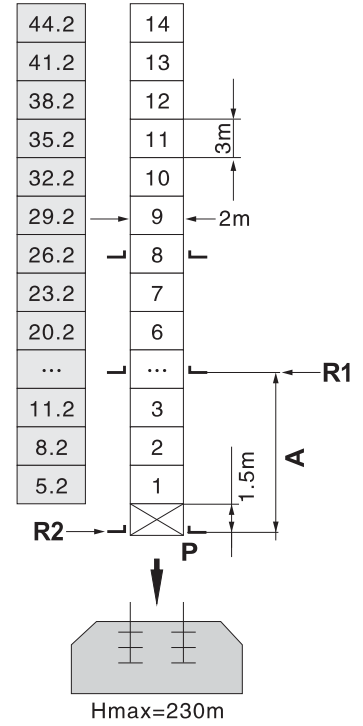
H<sub>1</sub>/V<sub>1</sub>



F1	● 179t	■ 196t
	105t	

**Bina İçi Tırmanma**  
Inner climbing

H<sub>1</sub>/V<sub>1</sub>



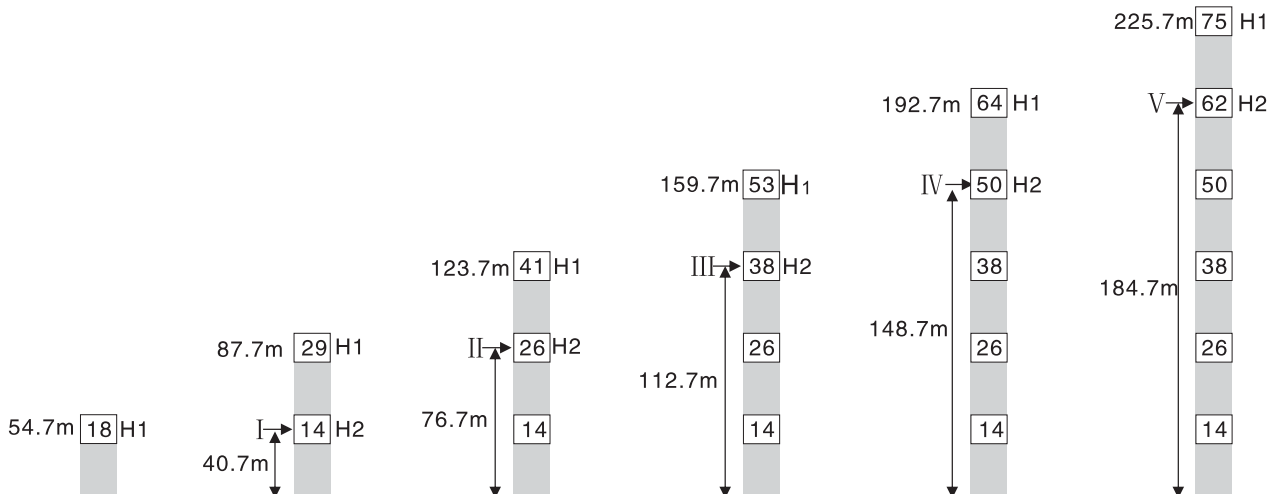
A	12m	18m
R1	38.5t	26.9t
R2	32.6t	24.7t
P	118t	118t
	96t	

- **Serviste** In service
- **Servis Dışı** Out of service

F = **Tepkime** Reactions  
 ● **Yük ve kuyruk taşı hariç toplam ağırlık**  
 Total weight without load and counter weight

## BAĞLANTI

## ANCHORAGE



H1 - **Kanca Altı Yükseklik** Height under hook

H2 - **Bağlantı Çerçevesinin Zemine Olan Yüksekliği** Height of anchorage frame to the ground







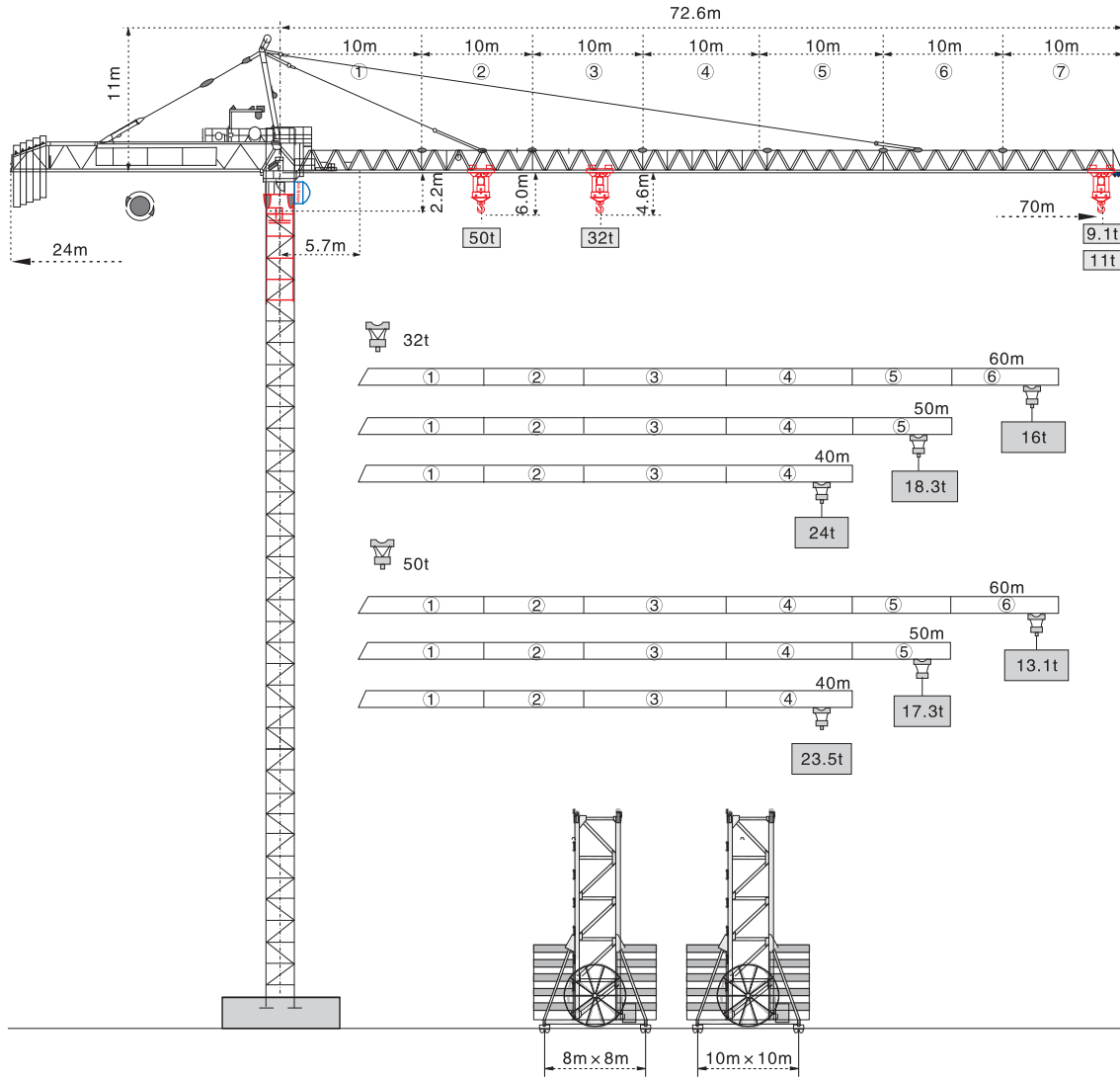
## TOPKİT KULE VİNÇLER

## TOPKIT TOWER CRANES



Model	Maksimum Yükseklik	Serbest Yüksekliği	Bom Uzunluğu	Maksimum Kapasitesi	Bom Ucu Kapasitesi
<i>Model</i>	<i>Max. Height</i>	<i>Free Standing Height</i>	<i>Jib Lenth</i>	<i>Max. Capacity</i>	<i>Jib End Capacity</i>
Q5513-6-8	140 m	45 m	55 m	6.000 kg 8.000 kg	1.300 kg
Q6013-6-8	140 m	49.5 m	60 m	6.000 kg 8.000 kg	1.300 kg
Q6015-10	182.8 m	58 m	60 m	10.000 kg	1.500 kg
Q6018-10	182.8 m	58 m	60 m	10.000 kg	1.800 kg
Q6024-12	124 m	56 m	60 m	12.000 kg	2.400 kg
Q6517-12	162 m	56 m	65 m	12.000 kg	1.700 kg
QH3/36B-12	186 m	57 m	60 m	12.000 kg	3.600 kg
Q7030-16	183 m	53 m	70 m	16.000 kg	3.000 kg
Q7052-25	252 m	78 m	70 m	25.000 kg	5.000 kg
Q900-32-50	287 m	104 m	70 m	32.000 kg 50.000 kg	9.100 kg 11.000 kg

## TOPKİT Q900



### YÜK DİYAGRAMLARI

### LOAD DIAGRAMS

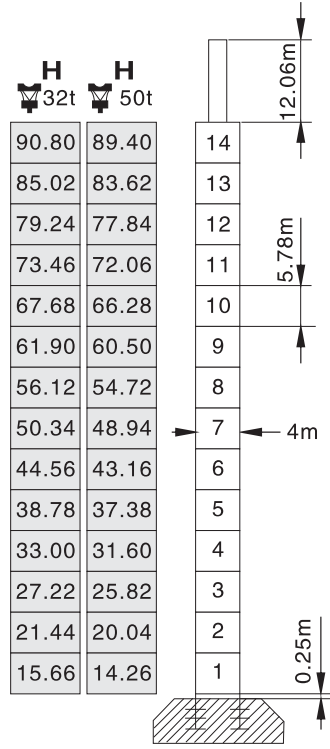
32t		Bom (t)	Kanca	Radüs (m)	Range (m)											
Jib (m)	Fall	Yük (t)	Load (t)	5.7-28.7	30	35	40	45	50	52.5	55	60	65	70		
70	VI	32	30.5	25.5	21.7	18.8	16.5	16	14.5	12.9	11.6	10.4				
	IV	16														
60	VI	32	28	24	20.8	18.3	16.2	16	15							
	IV	16														
50	VI	32	28	24	20.8	18.3										
	IV	16														
40	VI	32	28	24												
	IV	16														

50t		Bom (m)	Kanca	Radüs (m)	Range (m)											
Jib (m)	Fall	Yük (t)	Load (t)	5.7-19.9	25	28.9	29.3	35	40	45	50	55	60	65	70	
70	VI	50	38	32	31.5	25.1	21.2	17.9	15.3	13.2	11.4	9.9	8.6			
	IV	32														
60	VI	50	40.9	32	31.5	26.2	23	19.5	16.8	14.5	12.6					
	IV	32														
50	VI	50	40.9	32	31.5	26.2	23	19.5	16.8							
	IV	32														
40	VI	50	40.9	32	31.5	26.2	23									
	IV	32														

## MAST 4 X 4

## MAST 4 X 4

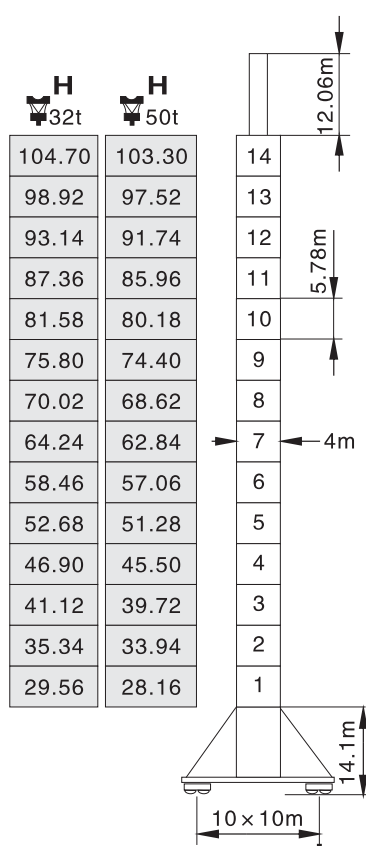
### Statik Stationary



F2 ↓ ↑ F3

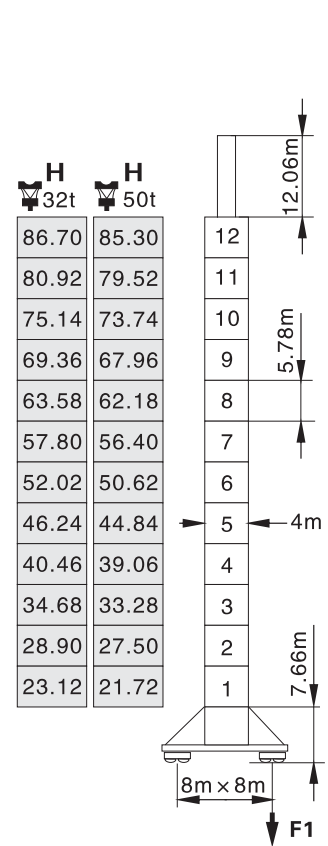
	●	●	■
F2	32t	275t	349t
	50t	311t	347t
F3	32t	125t	214t
	50t	132t	210t
		214t	

### Yürüçüslü Travelling



	●	●	■
F1	32t	195t	245t
	50t	218t	242t
		277t	

### Bina İçi Tırmanma Inner climbing



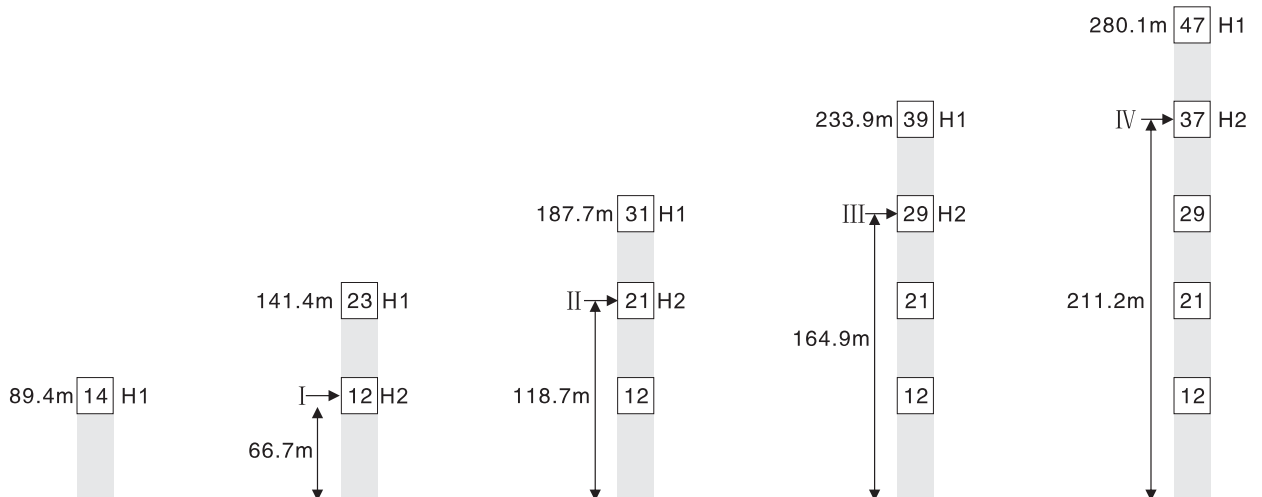
	●	●	■
F1	32t	240t	262t
	50t	270t	262t
		237t	

- Serviste In service
- Servis Dışı Out of service

- F = Tepkime Reactions
- Yük ve kuyruk taşı hariç toplam ağırlık Total weight without load and counter weight

## BAĞLANTI

## ANCHORAGE



H1 - Kanca Altı Yükseklik Height under hook

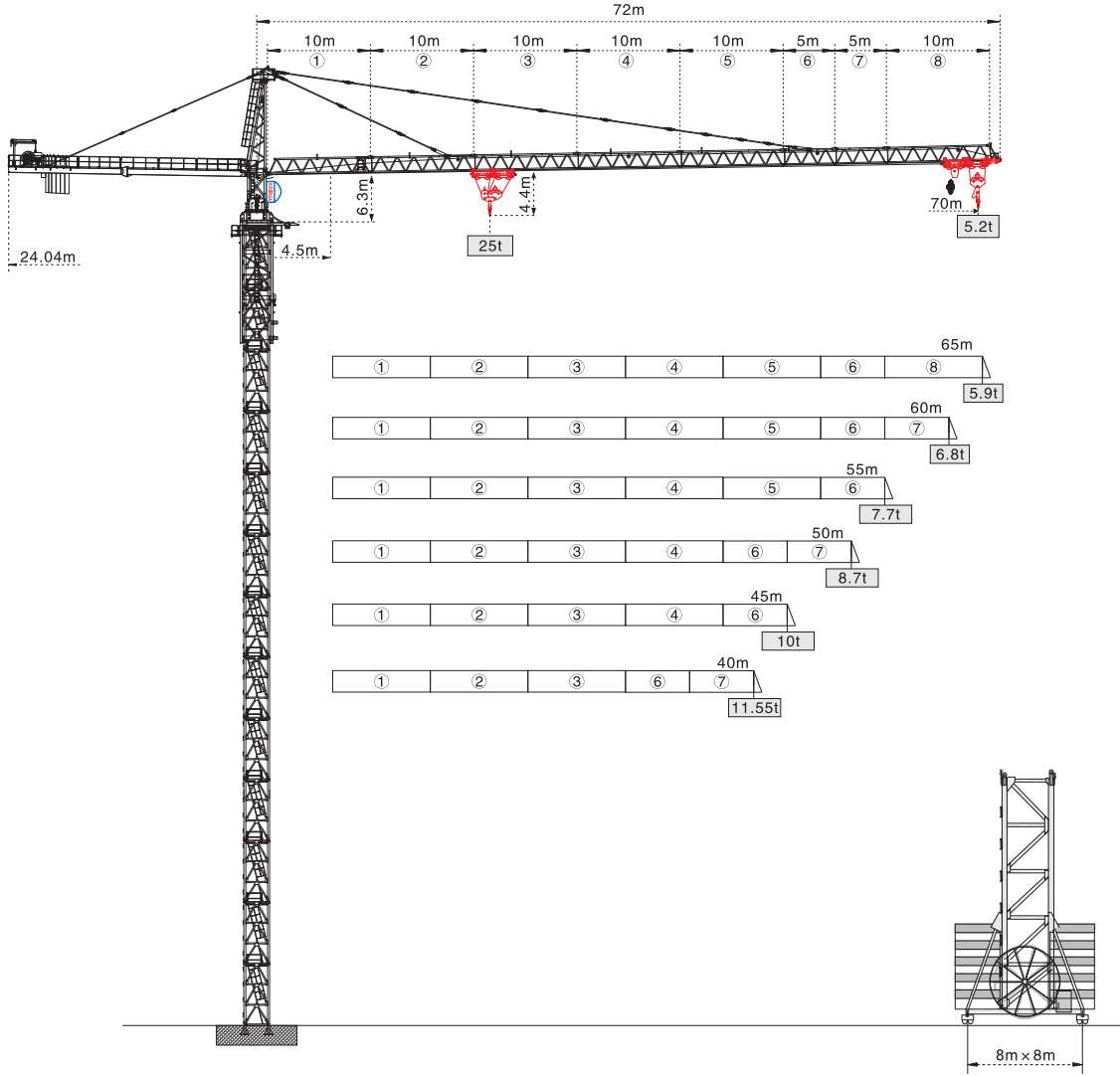
H2 - Bağlantı Çerçevesinin Zemine Olan Yüksekliği Height of anchorage frame to the ground







## TOPKİT Q7052 -25 25T



### YÜK DİYAGRAMLARI

### LOAD DIAGRAMS

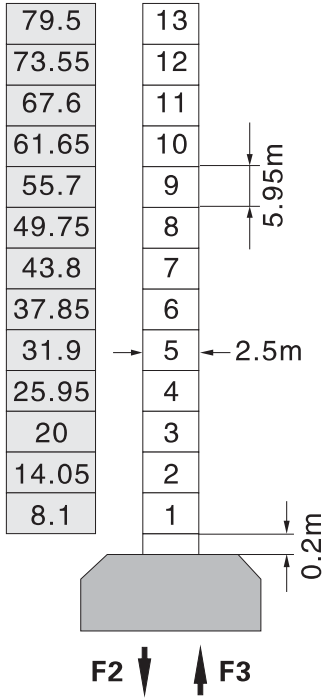
Bom (m) Jib (m)	Kanca Fall	Radüs (m) Range (m)	4.5-17.52	20	25	30	35	40	45	50	55	60	65	70
70	IV	Load (t)	25	21.41	16.42	13.16	10.86	9.15	7.83	6.77	5.92	5.2	4.6	4.09
	II		12.5				11.97	10.26	8.94	7.88	7.03	6.31	5.71	5.2
65	IV	Load (t)	25	22.04	16.92	13.57	11.21	9.45	8.1	7.02	6.14	5.41	4.79	
	II		12.5				12.32	10.56	9.21	8.13	7.25	6.52	5.9	
60	IV	Load (t)	25	22.92	17.62	14.15	11.7	9.88	8.48	7.36	6.45	5.69		
	II		12.5				11.99	9.59	8.47	7.56	6.8			
55	IV	Load (t)	25	23.32	17.94	14.42	11.93	10.08	8.65	7.52	6.59			
	II		12.5				11.19	9.76	8.63	7.7				
50	IV	Load (t)	25	23.52	18.09	14.54	12.04	10.17	8.74	7.59				
	II		12.5				11.28	9.85	8.7					
45	IV	Load (t)	25	23.87	18.38	14.78	12.24	10.35	8.89					
	II		12.5				11.46	10						
40	IV	Load (t)	25	24.06	18.53	14.9	12.34	10.44						
	II		12.5				11.55							

## MAST 2,5 X 2,5

## MAST 2,5 X 2,5

## Statik

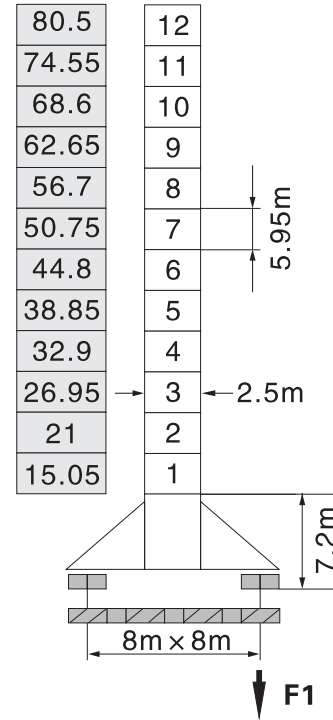
## Stationary

H<sub>1</sub>/H<sub>2</sub>

F2	●236t	■255t
F3	●163t	■182t
	152t	

## Yürüyüşlü

## Travelling

H<sub>1</sub>/H<sub>2</sub>

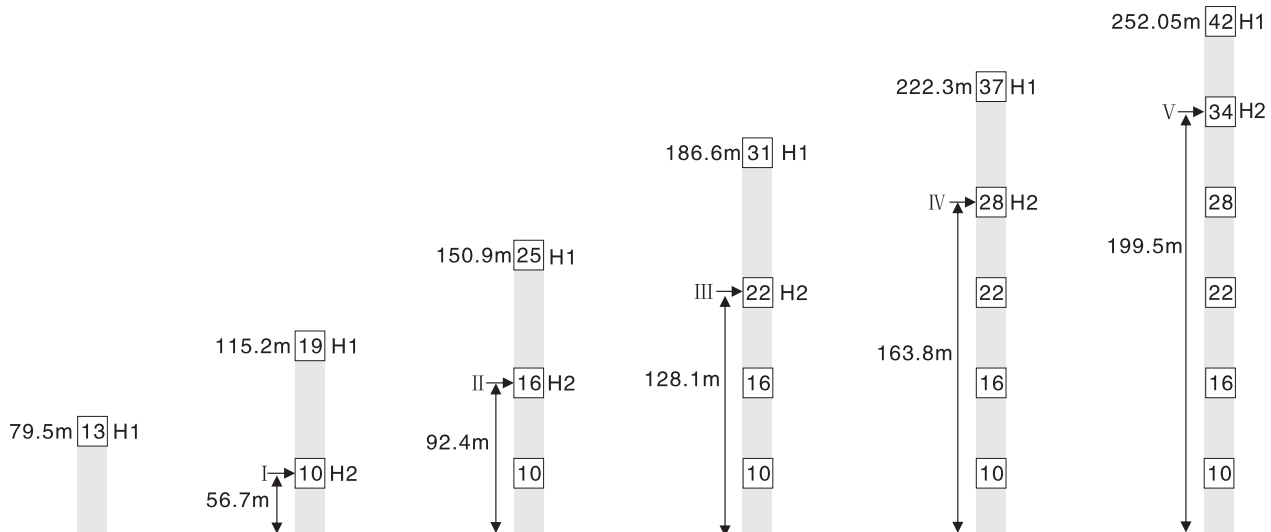
F1	●142t	■178t
	170t	

- Serviste In service
- Servis Dışı Out of service

- F= Tepkime Reactions
- ⚙️ Yük ve kuyruk taşı hariç toplam ağırlık  
Total weight without load and counter weight

## BAĞLANTI

## ANCHORAGE



H1 - Kanca Altı Yükseklik Height under hook

H2 - Bağlantı Çerçevesinin Zemine Olan Yüksekliği Height of anchorage frame to the ground



## LAFİNG KULE VİNÇLER

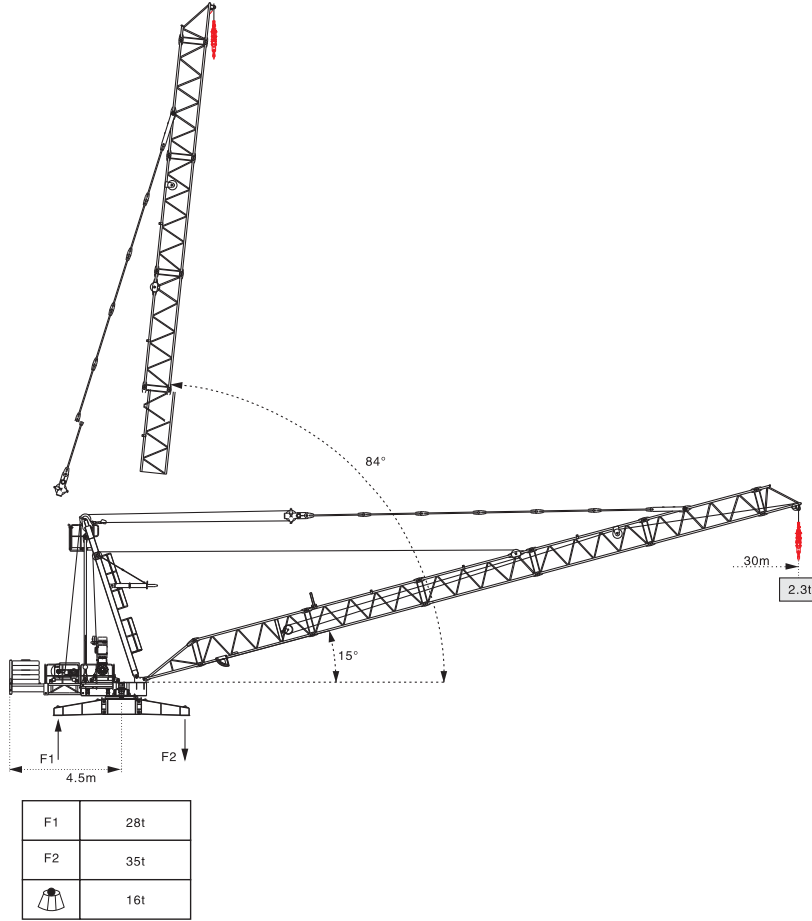
## LUFFING TOWER CRANES



Model	Maksimum Yükseklik	Serbest Yüksekliği	Bom Uzunluğu	Maksimum Kapasitesi	Bom Ucu Kapasitesi
<i>Model</i>	<i>Max. Height</i>	<i>Free Standing Height</i>	<i>Jib Lenth</i>	<i>Max. Capacity</i>	<i>Jib End Capacity</i>
DC1830-4	18 m	18 m	18 m	4.000 kg	3.000 kg
DC3023-10	30 m	30 m	30 m	10.000 kg	2.300 kg
DC4038-16	40 m	40 m	40 m	16.000 kg	3.800 kg
QD85-6	92 m	35 m	40 m	6.000 kg	1.500 kg
QD120-8	88 m	30 m	45 m	8.000 kg	2.200 kg
QD5023-8	176.3 m	40.3 m	50 m	8.000 kg	2.300 kg
QD5525-10	189.8 m	37.3 m	55 m	10.000 kg	2.500 kg
QD6038-18	214.7 m	36.6 m	60 m	18.000 kg	3.800 kg

## LUFFING

## DC3023-10T



**Yük ve kuyruk taşı hariç toplam ağırlık**  
Total weight without load and counter weight

## YÜK DİYAGRAMLARI

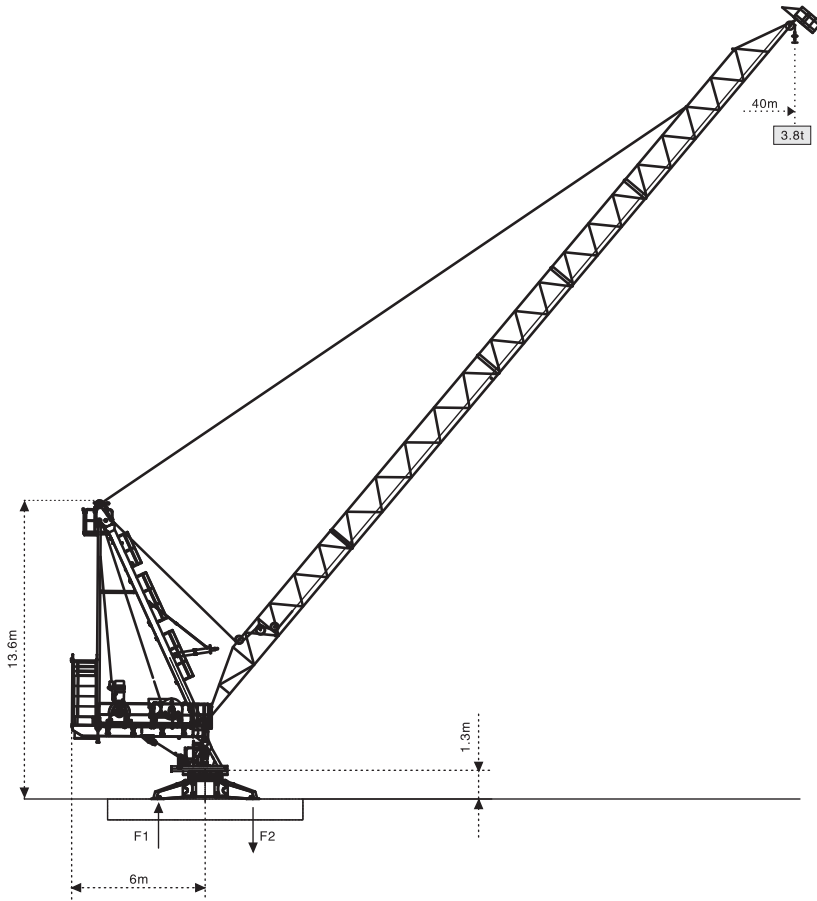
## LOAD DIAGRAMS


Bom (m)	Kanca	Range (m) Radüs (m)	Range (m)	4.5~10.65	11	12	15	17.5	20	23	25	28	30
Jib (m)	Fall		Luffing Degree	84° ~69.9°	69.3°	67.3°	61.1°	55.7°	49.9°	42.2°	36.4°	25.6°	15°
30	IV	Load (t)	10	9.35	8.38	6.26	5	4.13	3.3	2.85	2.31	2	
	II		5					4.43	3.6	3.15	2.61	2.3	


Jib (m)	Fall	Range (m)	4.5~10.8	11	12	15	18	18.05	20	23	25
		Luffing Degree	84° ~65.3°	64.9°	62.4°	54.6°	45.9°	45.8°	39.4°	27.3°	15°
25	IV	Load (t)	10	9.53	8.57	6.44	5.02	5	4.31	3.4	3.03
	II		5					4.61	3.7	3.33	

Jib (m)	Fall	Range (m)	4.5~11	12	15	18	18.6	20
		Luffing Degree	84° ~57.9°	54.6°	43.6°	29.6°	26.1°	4.49°
25	IV	Load (t)	10	8.75	6.62	5.2	5	4.49
	II		5					4.79

## LUFFING DC4038-16T



F1	12.8t
F2	40t
	29t

 **Yük ve kuyruk taşı hariç toplam ağırlık**  
Total weight without load and counter weight

## YÜK DİYAGRAMLARI

## LOAD DIAGRAMS

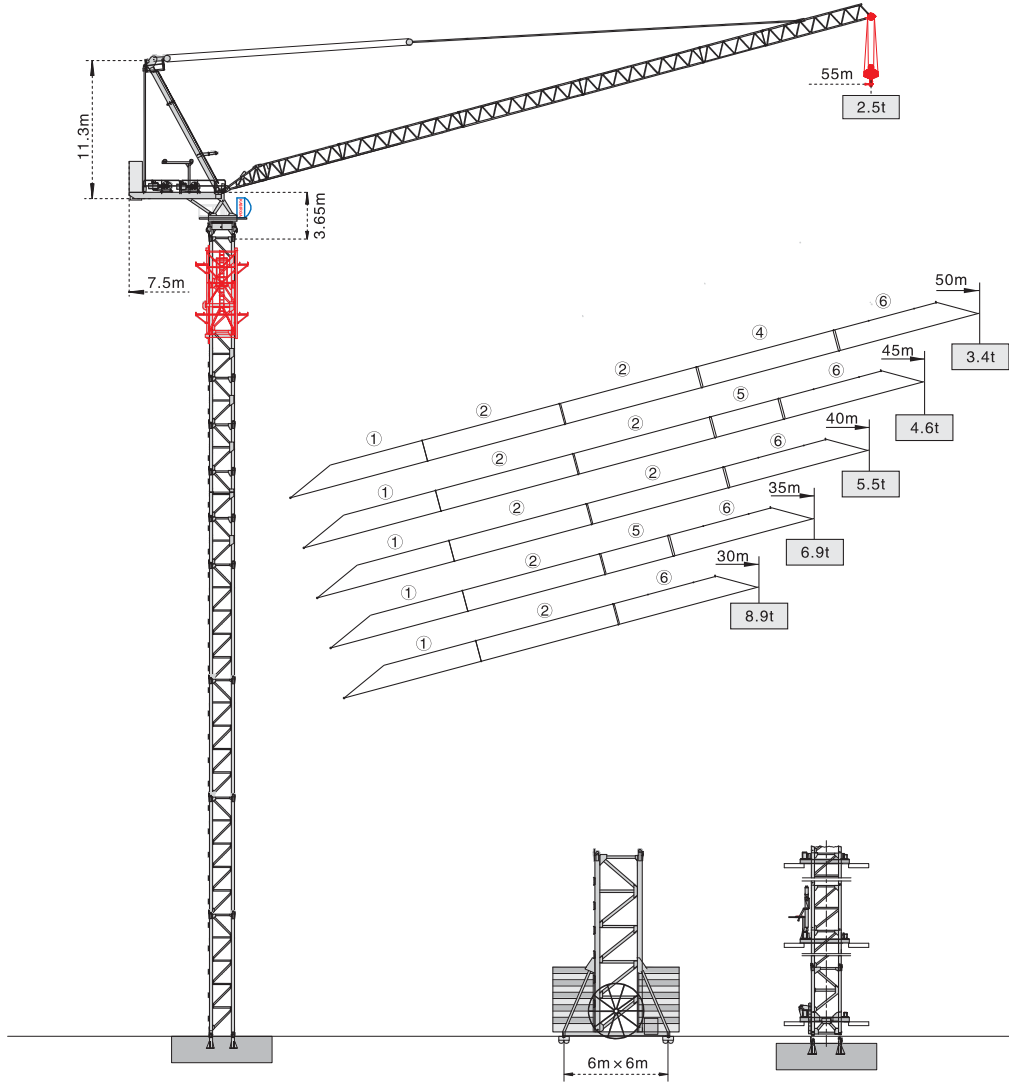
Bom (m) Jib (m)	Kanca Fall	Radüs (m) Range (m)	7.3~14.26	15	20	25	30	35	40
40	IV	Load (t)	16	15.09	10.48	7.7	5.84	4.51	3.5
	II		8				6.14	4.81	3.8

Jib (m)	Fall	Range (m)	6.4~14.37	15	20	25	30	35
35	IV	Load (t)	16	15.22	10.64	7.88	6.03	4.7
	II		8				6.33	5

Jib (m)	Fall	Range (m)	5.5~14.43	15	20	25	30
30	IV	Load (t)	16	15.32	10.77	8.03	6.2
	II		8				6.5

Jib (m)	Fall	Range (m)	4.6~14.55	15	20	25
25	IV	Load (t)	16	15.5	10.95	8.2
	II		8			

## LUFFING QD5525-10T



## YÜK DİYAGRAMLARI

## LOAD DIAGRAMS

Bom (m) Jib (m)	Kanca Fall	Radüs (m) Range (m)	5.1~25.51	30	35	40	45	50	55
55	IV	Load (t)	10	7.85	6.11	4.8	3.78	2.97	2.3
	II		5				3.98	3.17	2.5
50	IV	Load (t)	10	8.07	6.33	5.03	4.01	3.2	
	II		5				4.21	3.4	
45	IV	Load (t)	10	8.55	6.77	5.44	4.4		
	II		5				4.6		
40	IV	Load (t)	10	8.55	6.81	5.5			
	II		5						
35	IV	Load (t)	10	8.62	6.9				
	II		5						
30	IV	Load (t)	10	8.9					
	II		5						



## MAST 2 X 2

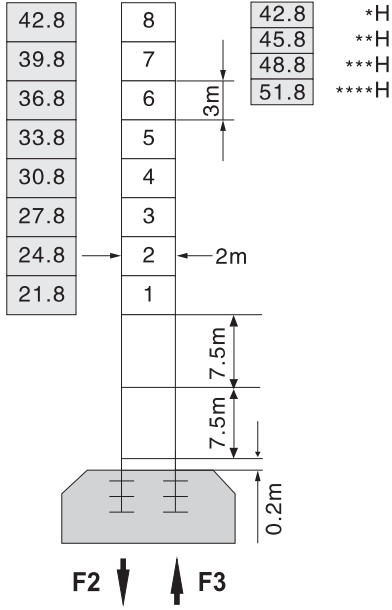
## MAST 2 X 2

**Statik**  
Stationary

**Yürüyüşlü**  
Travelling

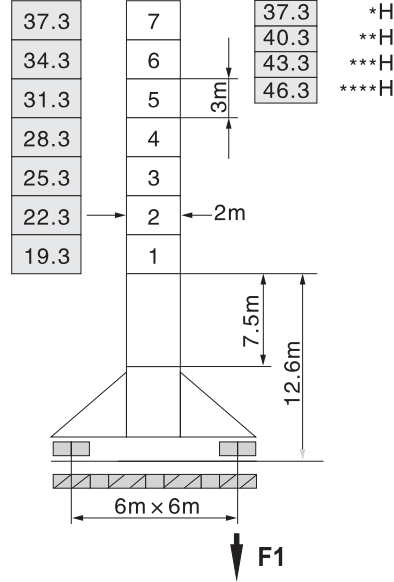
**Bina İçi Tırmanma**  
Inner climbing

H(m)



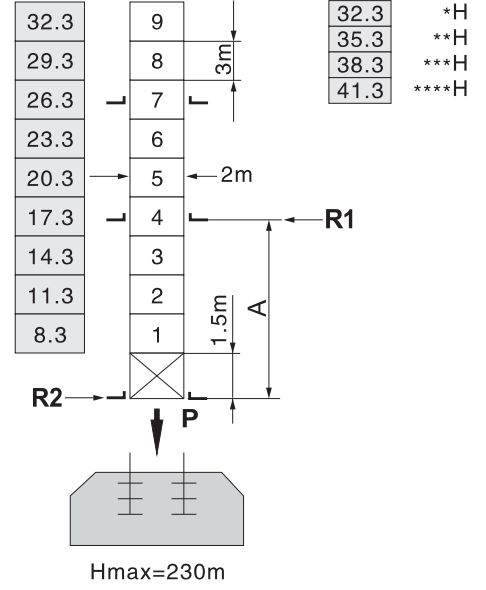
F2	● 165t	■ 300t
F3	● 115t	■ 257t
	75t	

H(m)



F1	● 109t	■ 143t
	84t	

H(m)

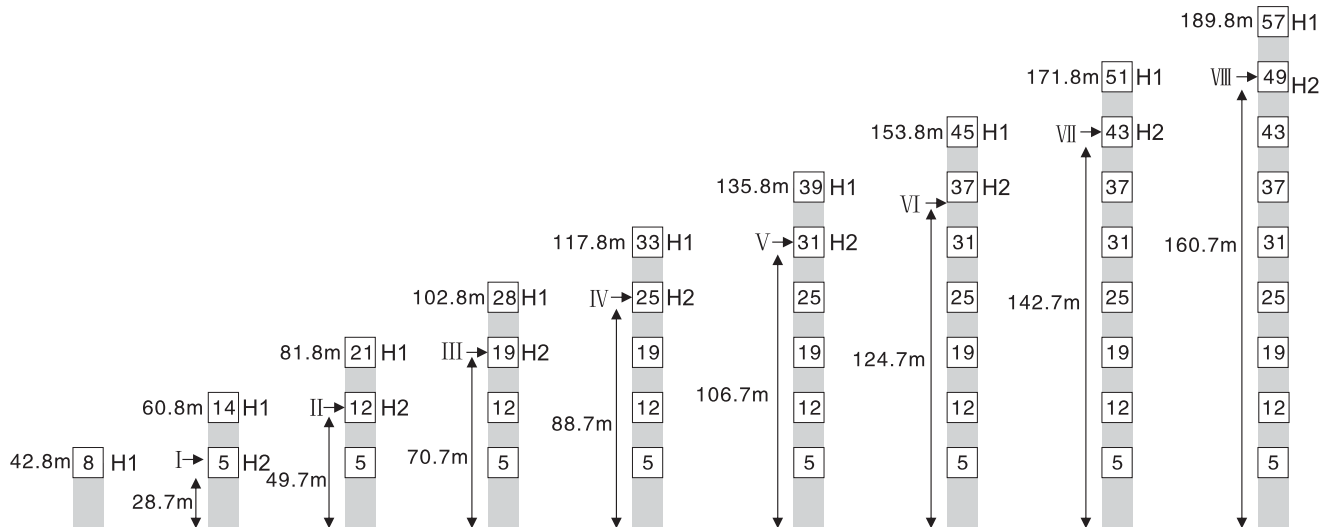


A	12m	16m
R1	31t	23t
R2	27t	20t
P	90t	90t
	77t	

- **Serviste** In service
- **Servis Dışı** Out of service
- F = **Tepkime** Reactions
- ⚙ **Yük ve kuyruk taşı hariç toplam ağırlık** Total weight without load and counter weight

## BAĞLANTI

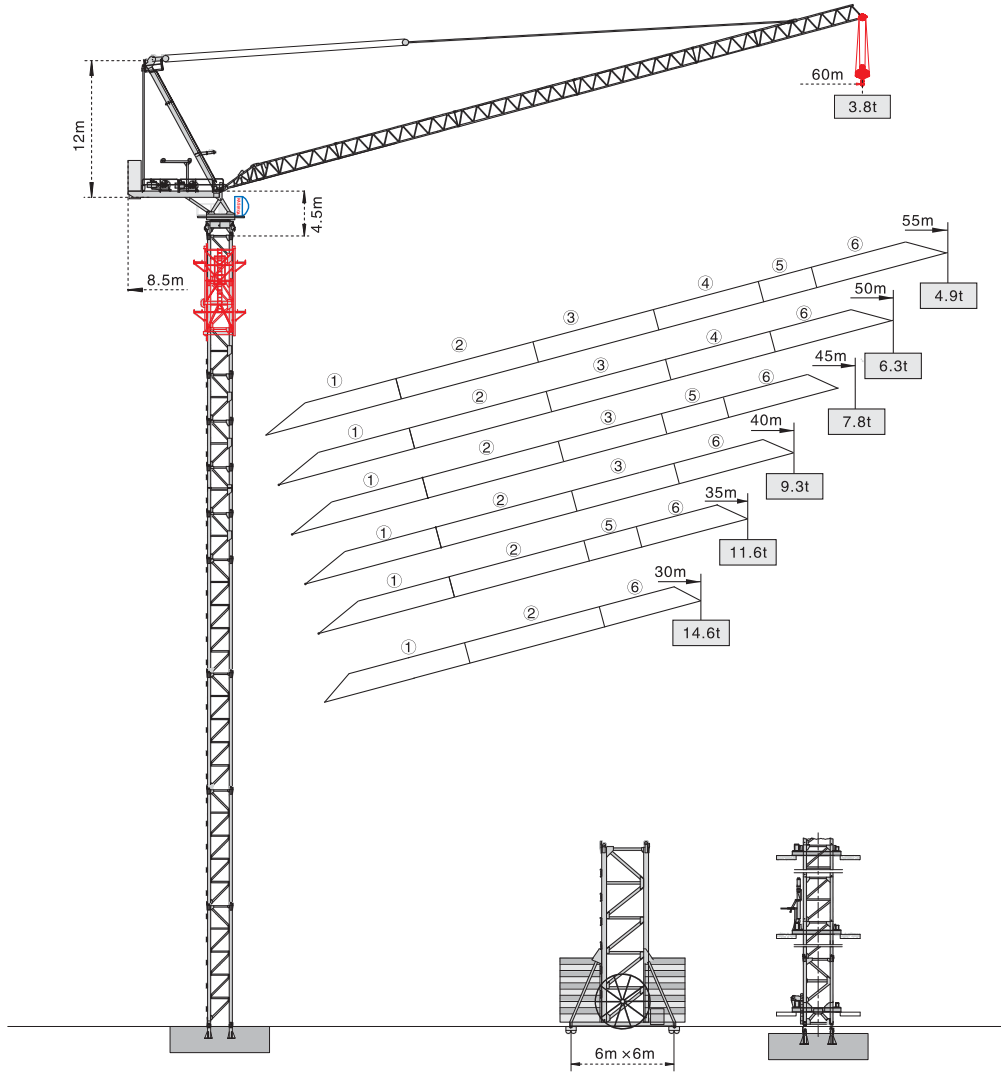
## ANCHORAGE



H1 - **Kanca Altı Yükseklik** Height under hook

H2 - **Bağlantı Çerçevesinin Zemine Olan Yüksekliği** Height of anchorage frame to the ground

## LUFFING QD6038-18T



## YÜK DİYAGRAMLARI

## LOAD DIAGRAMS

Bom (m) Jib (m)	Kanca Fall	Radüs (m) Range (m)	5.5~39.11	40	45	50	55	60
60	II	Load (t)	9	8.71	7.09	5.78	4.7	3.8

Jib (m)	Fall	Range (m)	5.1~39.56	40	45	50	55
55	II	Load (t)	9	8.86	7.25	5.96	4.9

Jib (m)	Fall	Range (m)	4.6~24.29	25	30	35	40	45	50
50	IV	Load (t)	18	17.39	13.58	10.85	8.8	7.19	5.9
	II		9				7.59	6.3	

Jib (m)	Fall	Range (m)	4.2~24.54	25	30	35	40	45
45	IV	Load (t)	18	17.59	13.78	11.06	9	7.4
	II		9				7.8	

Jib (m)	Fall	Range (m)	3.7~24.86	25	30	35	40
40	IV	Load (t)	18	17.92	14.1	11.36	9.3
	II		9				

Jib (m)	Fall	Range (m)	3.3~25.08	30	35
35	IV	Load (t)	18	14.33	11.6
	II		9		

Jib (m)	Fall	Range (m)	2.8~25.39	30
30	IV	Load (t)	18	14.6
	II		9	

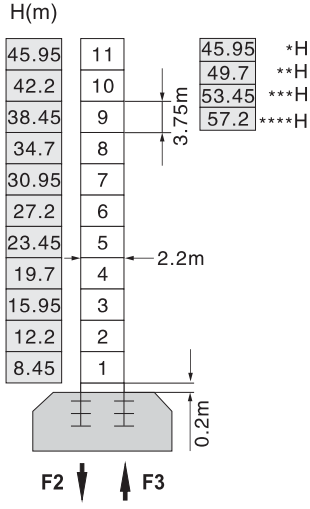
## MAST 2 X 2

## MAST 2 X 2

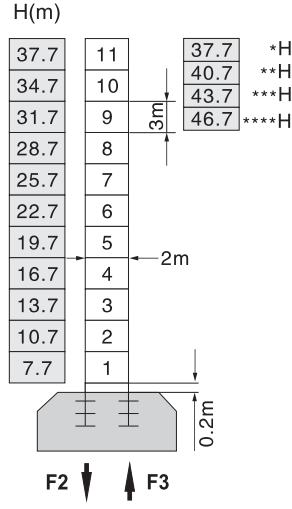
**Statik**  
Stationary

**Yürüyüşlü**  
Travelling

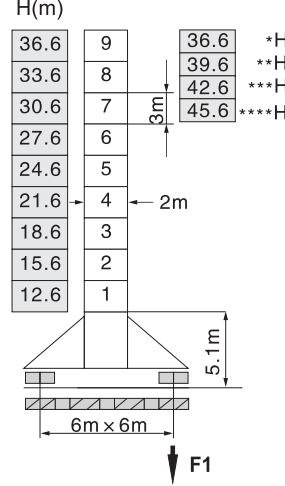
**Bina İçi Tırmanma**  
Inner climbing



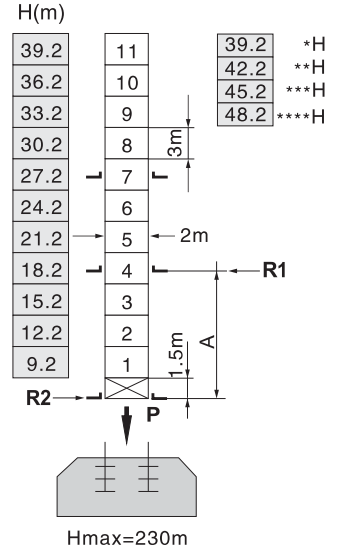
F2	●180t	■315t
F3	●131t	■272t
	83t	



F2	●172t	■308t
F3	●123t	■265t
	75t	



F1	●120t	■152t
	85t	



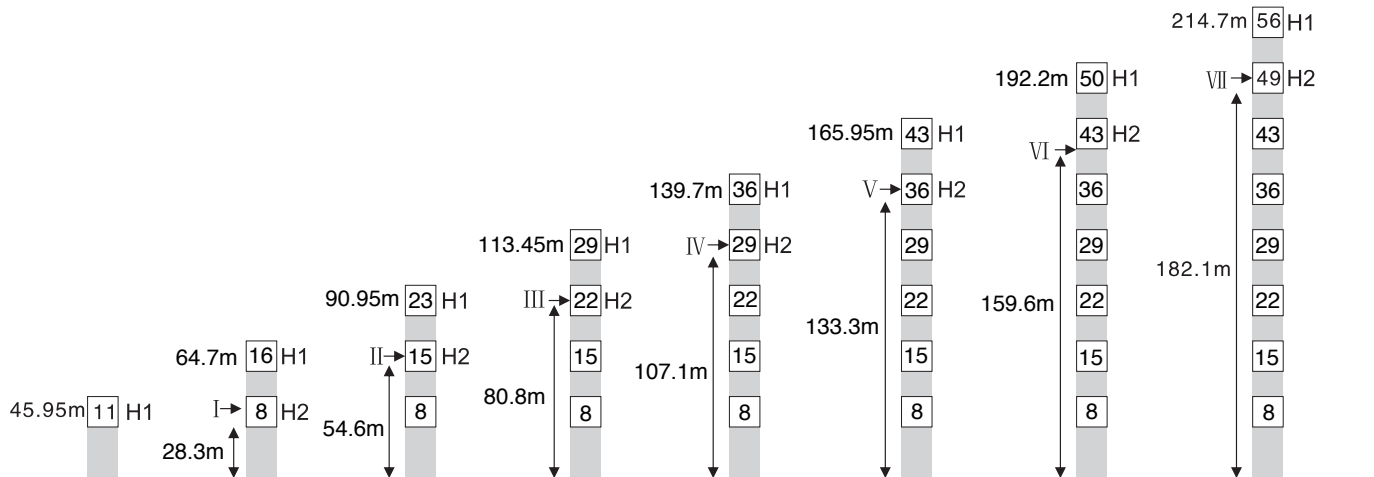
A	12m	18m
R1	30t	22.5t
R2	26t	19.5t
P	97t	97t
	85t	

- **Serviste** In service
- **Servis Dışı** Out of service

F = **Tepkime** Reactions  
**Yük ve kuyruk taşı hariç toplam ağırlık**  
 Total weight without load and counter weight

## BAĞLANTI

## ANCHORAGE



H1 - **Kanca Altı Yükseklik** Height under hook

H2 - **Bağlantı Çerçevesinin Zemine Olan Yüksekliği** Height of anchorage frame to the ground



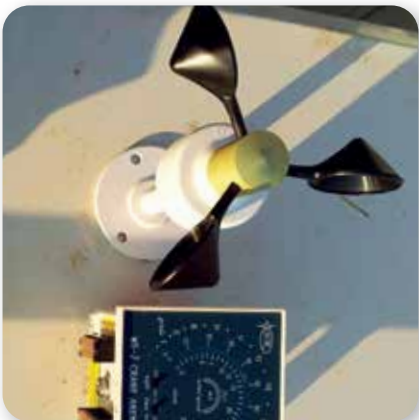
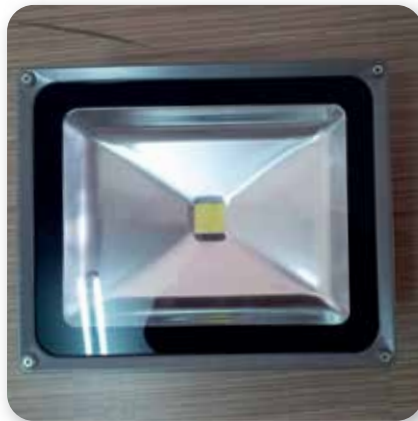






















AC  
YAPIALİ AĞAR  
İnşaat ve Tic. Ltd. Şti.

aRam

ARTOS  
GROUP  
Mimariye Değer Katır.

baysaş

BOZ  
GROUPCELİKLER  
YATIRIM HOLDİNG A.Ş.

DAĞ YAPI

DELMAR

Demir İnşaat

DUMANKAYA

ERYAPI

FCA İnşaat

HACIOĞULLARI  
İNŞAAT GRUBUhanyurt  
inşaat a.ş.KARDEN  
İNŞAAThelis  
yapıIDAKON  
Yapı ve İnşaat A.Ş.İLCİ  
GRUPİLHANLAR VİNC  
İNŞAAT VE TİC. LİM. Şİ.

kalyon inşaat

KDM inşaat  
Kentleşme Dönüşüm Merkezikulak  
inşaat a.ş.  
construction co.

MEKAN YAPI

MOSTARYAPI

NOVA

Okkalar  
inşaat A.Ş.ORTON  
GROUPÖZSOY  
GROUPperspektif  
yapı inşaat sanayi ve tic. Ltd. Şti.SERKA  
İNŞAAT  
YATIRIM HOLDİNG A.Ş.

SERKAN AŞ.

SUAT ALTIN  
İNŞAAT LTD.ŞTİ.SUR  
YAPI  
UYGARLIĞIN HİKAYESİŞENKAYA  
inşaatşimşek elektrik  
SAYIŞ VE TEZAR ETİC. LTD. ŞTİ.

TOPRAH İNŞAAT

VAROL YAPI  
İNŞAAT YATIRIM HOLDİNG A.Ş.

Yeni Fidan İnşaat

ZERAY  
İNŞAAT



**KASIRGA KULE VİNÇ İNŞ. İŞ MAKİNALARI  
SAN. ve DİŞ TİC. LTD. ŞTİ.**

**Kurtköy Mah. Ankara Cad. No: 335 Kat: 4 D: 8  
Pendik - İstanbul - TURKEY**

**Phone:+90 216 507 25 32 Fax:+90 216 507 25 33**

**E-mail: [kasirga@kasirgakulevinc.com](mailto:kasirga@kasirgakulevinc.com) [kasirgavinc@gmail.com](mailto:kasirgavinc@gmail.com)**

**[www.kasirgakulevinc.com](http://www.kasirgakulevinc.com) / [www.discepheplatformu.com](http://www.discepheplatformu.com)**