

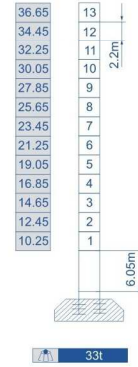
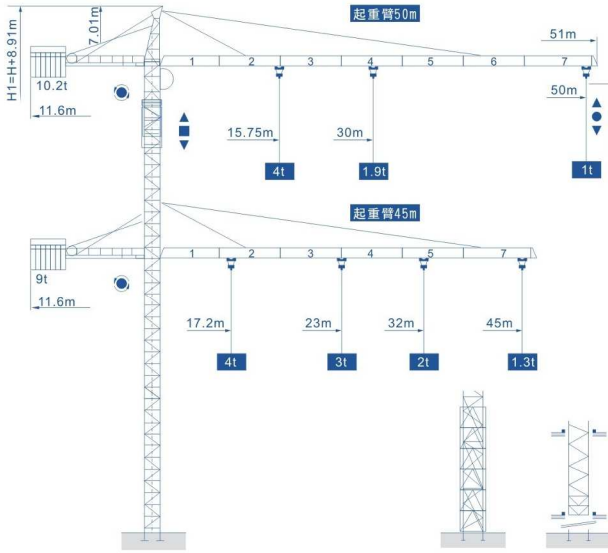
**Q5010**



**Q5010**

塔身截面 Mast Ölçüleri Mast 1.36x1.36 m

外形尺寸 Anahat Ölçüleri Outline Dimensions



自重 Without load and ballast with longest jib and maximum height

附着位置及塔机高度 Sabit Yüksekliği Anchorage



082 www.kasirgakulevinc.com ISO9001, CE, GOST SERTİFİKALARI ISO9001, CE, GOST AUTHENTICATION

www.kasirgakulevinc.com ISO9001, CE, GOST SERTİFİKALARI ISO9001, CE, GOST AUTHENTICATION 083

**Q5010**

载荷特性表 Yük Diyagramı Load Diagrams

| 起重臂 (m) Jib | 倍率 Fall | 起重幅度 (m) Range | 2~15.75 | 16   | 18   | 20   | 25   | 26   | 28   | 29   | 30   | 33   | 36   | 40   | 42   | 44   | 46   | 48   | 50 |
|-------------|---------|----------------|---------|------|------|------|------|------|------|------|------|------|------|------|------|------|------|------|----|
| 50          | IV      | 起重量(t) Load    | 4       | 3.89 | 3.42 | 3.04 | 2.36 | 2.26 | 2.07 | 2    | 1.9  | 1.77 | 1.53 | 1.34 | 1.26 | 1.19 | 1.12 | 1.02 | 1  |
|             | II      |                | 2       | 1.9  | 1.77 | 1.53 | 1.34 | 1.26 | 1.19 | 1.12 | 1.02 | 1    |      |      |      |      |      |      |    |

| 起重臂 (m) Jib | 倍率 Fall | 起重幅度 (m) Range | 2~17.2 | 18   | 20   | 22   | 24   | 25   | 26   | 28   | 30   | 32 | 36   | 40   | 42   | 44   | 45  |
|-------------|---------|----------------|--------|------|------|------|------|------|------|------|------|----|------|------|------|------|-----|
| 45          | IV      | 起重量(t) Load    | 4      | 3.8  | 3.4  | 3.05 | 2.77 | 2.64 | 2.53 | 2.32 | 2.14 | 2  | 1.73 | 1.52 | 1.43 | 1.35 | 1.3 |
|             | II      |                | 2      | 1.73 | 1.52 | 1.43 | 1.35 | 1.3  |      |      |      |    |      |      |      |      |     |

配重配置表 Kuyruk Taşları Ballast

|     | 1800kg | 1200kg | kg |       |
|-----|--------|--------|----|-------|
| 50m | 11.6m  | 5      | 1  | 10200 |
| 45m | 11.6m  | 5      | 0  | 9000  |

Mekanizma Özellikleri 机构特性 Specifications (Mechanisms)

| Sistemler Items | Mekanizmalar Mechanism | Hız (m/min) Speed (m/min) | Kaldırma Ağırlığı (t) Hoist Weight (t) | Helat Kapasitesi (m) Rope Capacity (m) | Motor Güçleri (kw) Motor (kw) |
|-----------------|------------------------|---------------------------|--|--|-------------------------------|
| 起升 Hoisting     | 双绳 2 fall              | 7.5                       | 2                                      | 260                                    | 15                            |
|                 |                        | 35                        | 2                                      |  |                               |
|                 |                        | 70                        | 1                                      |  |                               |
|                 |                        | 3.8                       | 4                                      |  |                               |
| 变幅 Trolleying   | 四绳 4 fall              | 17.5                      | 4                                      | 58                                     | 1.5                           |
|                 |                        | 35                        | 2                                      |  |                               |
| 回转 Slewing      | 3JHE120                | 0-0.6r/min                |  |  | 3.7                           |

084 www.kasirgakulevinc.com ISO9001, CE, GOST SERTİFİKALARI ISO9001, CE, GOST AUTHENTICATION

www.kasirgakulevinc.com ISO9001, CE, GOST SERTİFİKALARI ISO9001, CE, GOST AUTHENTICATION 085