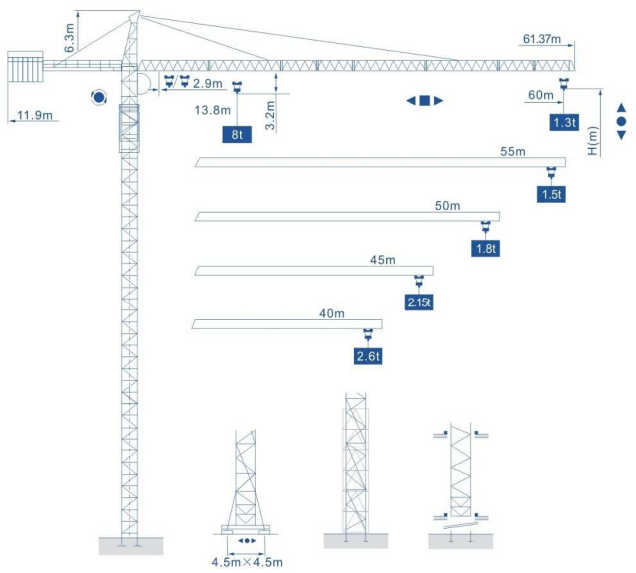
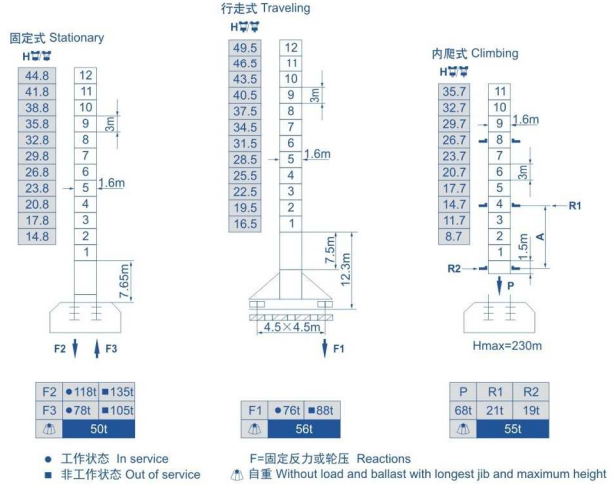




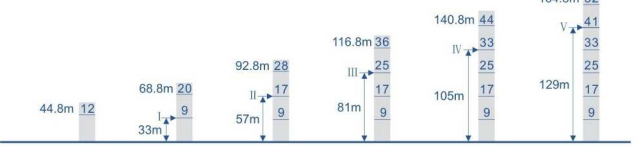
外形尺寸 Anahat Ölçüleri Outline Dimensions



塔身截面 Mast Ölçüleri Mast L46A1 1.6x1.6 m



附着位置及塔机高度 Sabit Yüksekliği Anchorage



载荷特性表 Yük Diyagramı Load Diagrams

起重臂 (m) Jib	倍率 Fall	起重幅度 (m) Range	2.9-13.8	15.52	20	25.3	28	30	35	40	45	48	50	52	55	60
60	IV	起重重量 (t) Load	8	7	5.19	3.9	3.45	3.16	2.6	2.17	1.85	1.68	1.59	1.5	1.38	1.2
	II		4				3.55	3.26	2.7	2.27	1.95	1.78	1.59	1.6	1.48	1.3
55	IV	起重重量 (t) Load	8	7	5.26	4	3.9	3.5	2.63	2.2	1.9	1.7	1.6	1.52	1.4	
	II		4				3.6	2.73	2.3	2	1.8	1.7	1.62	1.5		
50	IV	起重重量 (t) Load	8	7	5.48	4	3.9	3.65	3.09	2.48	2.17	1.97	1.8	1.7		
	II		4				3.75	3.19	2.58	2.26	2.07	1.9	1.8			
45	IV	起重重量 (t) Load	8	7	5.6	4.06	4	3.9	3.34	2.86	2.29	2.43	2.05			
	II		4				3.44	2.96	2.39	2.53	2.15					
40	IV	起重重量 (t) Load	8	7	5.7	4	3.9	3.85	2.9	2.75	2.5					
	II		4				3.95	3	2.85	2.6						

配重配置表 Kuyruk Taşları Ballast

起重臂 (m) Jib	配重 (kg) Ballast	数量 (kg) Qty
60m	11.9m	7
55m	11.9m	6
50m	11.9m	5

Mekanizma Özellikleri 机构特性 Specifications (Mechanisms)

Sistemler Items	Mekanizmalar Mechanism	Hız (m/min) Speed (m/min)	Kaldırma Ağırlığı (t) Hoist Weight (t)	Halat Kapasitesi (m) Rope Capacity (m)	Motor Güçleri (kw) Motor (kw)	
起升 Hoisting	40PC20	双绳 2 fall	0-6.6	4	420 >420* 变频调速 Frequency Control	30/30/5.5
			0-35	4		
		0-70	2			
		0-3.3	8			
	40LVF20	四绳 4 fall	0-17.5	8		
			0-35	4		
		双绳 2 fall	0-40	4		
			0-66	2.4		
变幅 Trolleying	DVF95	0-60			塔转矩 Torque 95Nm	
		X96L	15-30-60		塔转矩 Torque 95Nm	
	回转 Slewing	RVF95	0-0.7r/min			塔转矩 Torque 2x95Nm
		RCV95				塔转矩 Torque 2x95Nm
行走 Traveling	RT433	0-12.5-25			4x1.7/3.4	
	14TVF	0-25	变频调速 Frequency Control		2x5.2	
电源 Power			380V/50Hz 380V/60Hz 440V/60Hz			

*根据用户特殊要求提供 To be supplied as per client's specific requirements
*Yıldız işareti olanlar da müşterinin isteğine göre değişiklik yapılabilir