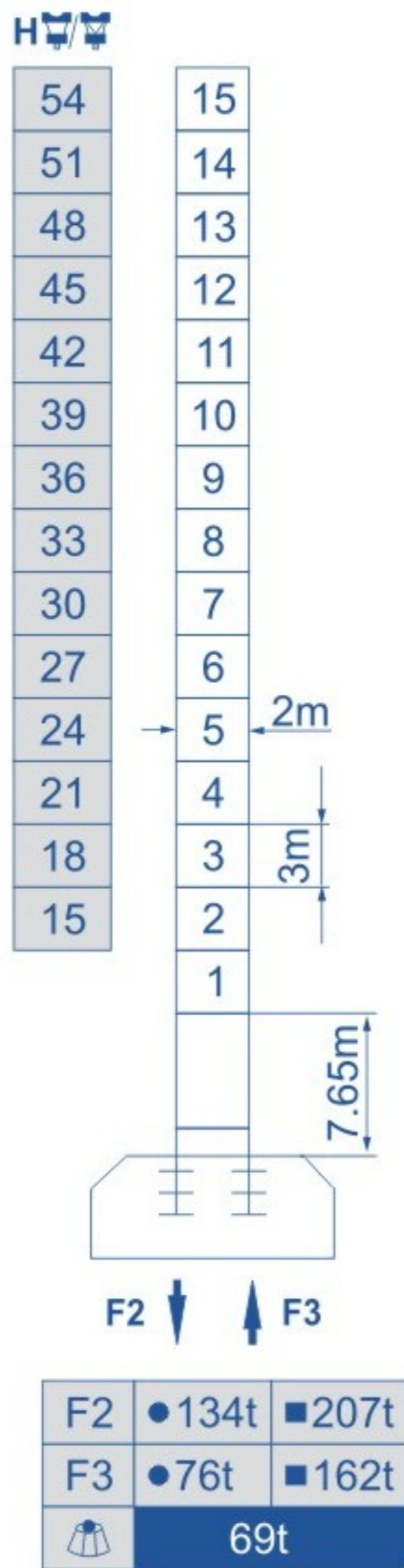




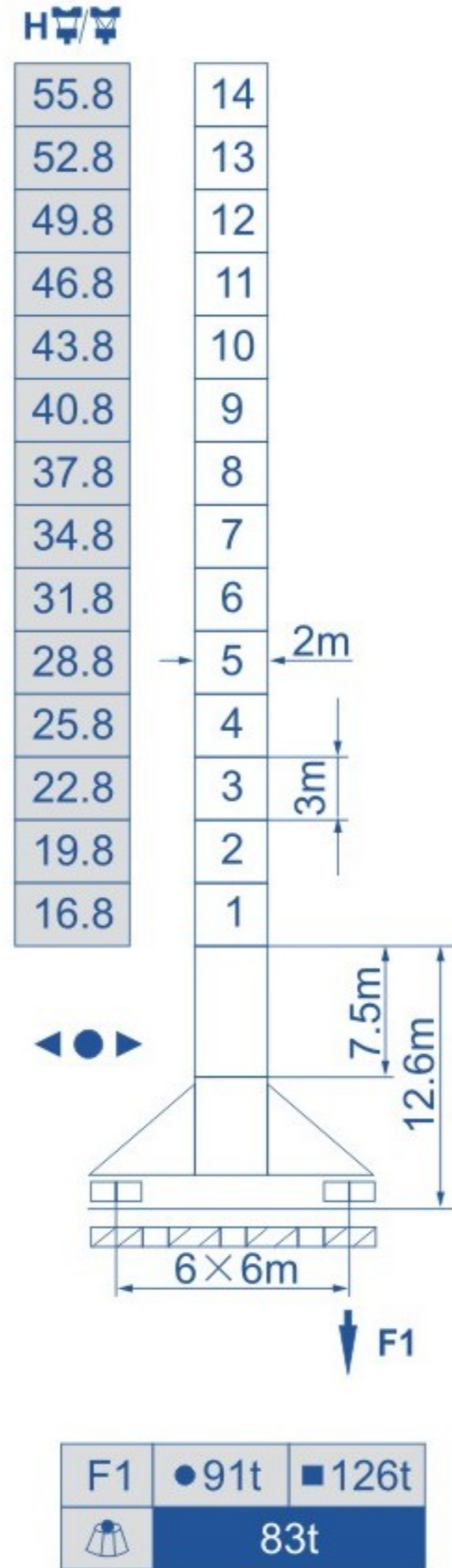


## 塔身截面 Mast L68B1 2mx2m

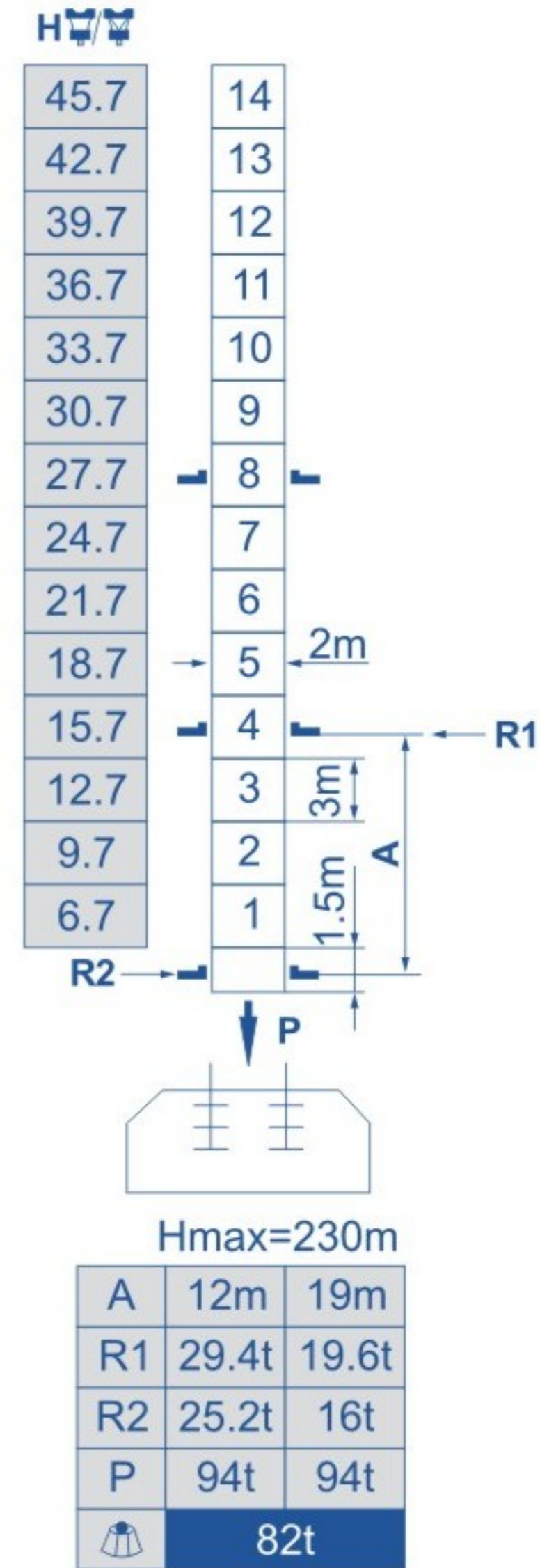
固定式 Stationary



行走式 Traveling



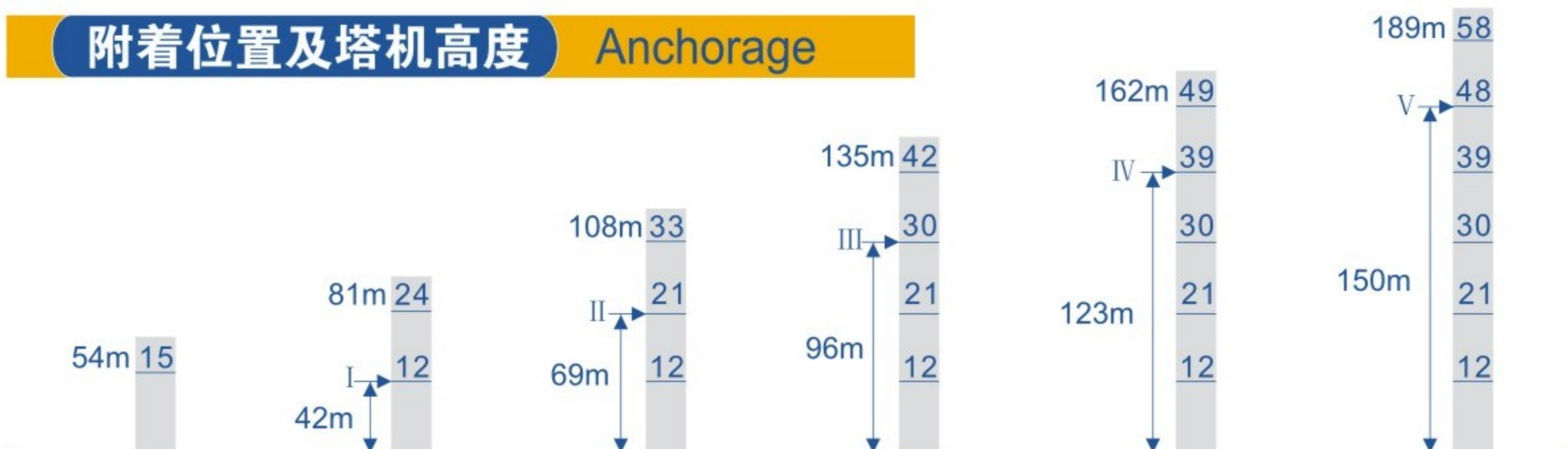
内爬式 Climbing



- 工作状态 In service
- 非工作状态 Out of service

- F=固定反力或轮压 Reactions
- 自重 Without load and ballast with longest jib and maximum height

## 附着位置及塔机高度 Anchorage








## 载荷特性表 Load Diagrams

起重臂 (m) Jib	倍率 Fall	起重幅度 (m) Range	2.9 ~ 14.5	16	18	20	22	25	28.3	30	35	40	45	47	50	52	55	57	60
60	IV	起重量(t)	12	10.7	9.7	8.18	7.27	6	5.8	5.42	4.49	3.8	3.26	3.08	2.84	2.69	2.49	2.36	2.2
	II	Load	6							5.62	4.69	4	3.46	3.28	3.04	2.89	2.69	2.56	2.4
55	IV	起重量(t)	12	9.3	8.2	7	6.4	6	5.8	5	4.7	4.3	4	3.7	3.5	3.2	3	2.8	
	II	Load	6							5.2	4.9	4.5	4.2	3.9	3.7	3.4	3.2	3	
50	IV	起重量(t)	12	9.8	8.7	7.5	6.8	6	5.8	5.3	5	4.5	4.3	3.9	3.7	3.4			
	II	Load	6							5.5	5.2	4.7	4.5	4.1	3.9	3.6			
45	IV	起重量(t)	12	10.2	9.1	7.8	7.1	6.2	6	5.8	5.2	4.8	4.5	4.1					
	II	Load	6							5.4	5	4.7	4.3						
40	IV	起重量(t)	12	10.3	9.2	7.9	7.2	6.3	6	5.8	5.3	4.8							
	II	Load	6							5.5	5								
35	IV	起重量(t)	12	10.3	9.2	7.9	7.2	6.3	6	5.8	5.65								
	II	Load	6							5.85									
30	IV	起重量(t)	12	10.3	9.2	7.9	7.2	6.3											
	II	Load	6																

## 配重配置表 Ballast

			4700kg	2000kg	 kg
60m	14.5m	5			23500
55m	14.5m	4		1	20800
50m	14.5m	3		2	18100
45m	12m	4		1	20800
40m	12m	4			18800
35m	12m	3		1	16100
30m	12m	3			14100





## 机构特性 Specifications (Mechanisms)

名称 Items	机构代号 Mechanism	工作速度 (m/min) Speed		起重量 (t) Hoist Weight	容绳量 (m) Rope Capacity	电动机 (kw) Motor
起升 Hoisting	70RCS30	双绳 2 fall	0-40	6	525 >525*	51.5
			0-80	3		
		四绳 4 fall	0-20	12		
			0-40	6		
	75LVF30BS	双绳 2 fall	0-40	6	525 >525* 变频调速 Frequency Control	55
			0-60	4		
			0-80	3		
		四绳 4 fall	0-20	12		
			0-30	8		
			0-40	6		
变幅 Trolleying	X120K	16-34-44			堵转力矩 Torque 120Nm	
	DVF120	0-60		变频调速 Frequency Control	堵转力矩 Torque 120Nm	
回转 Slewing	RCV120	0-0.7r/min			堵转力矩 Torque 2×120Nm	
	RVF120			变频调速 Frequency Control	堵转力矩 Torque 2×120Nm	
行走 Traveling	RT443	0-12.5-25			4×1.7/3.4	
	18TVF	0-25		变频调速 Frequency Control	4×3.4	
电源 Power	380V/50Hz 380V/60Hz 440V/60Hz					

\*根据用户特殊要求提供 To be supplied as per client's specific requirements