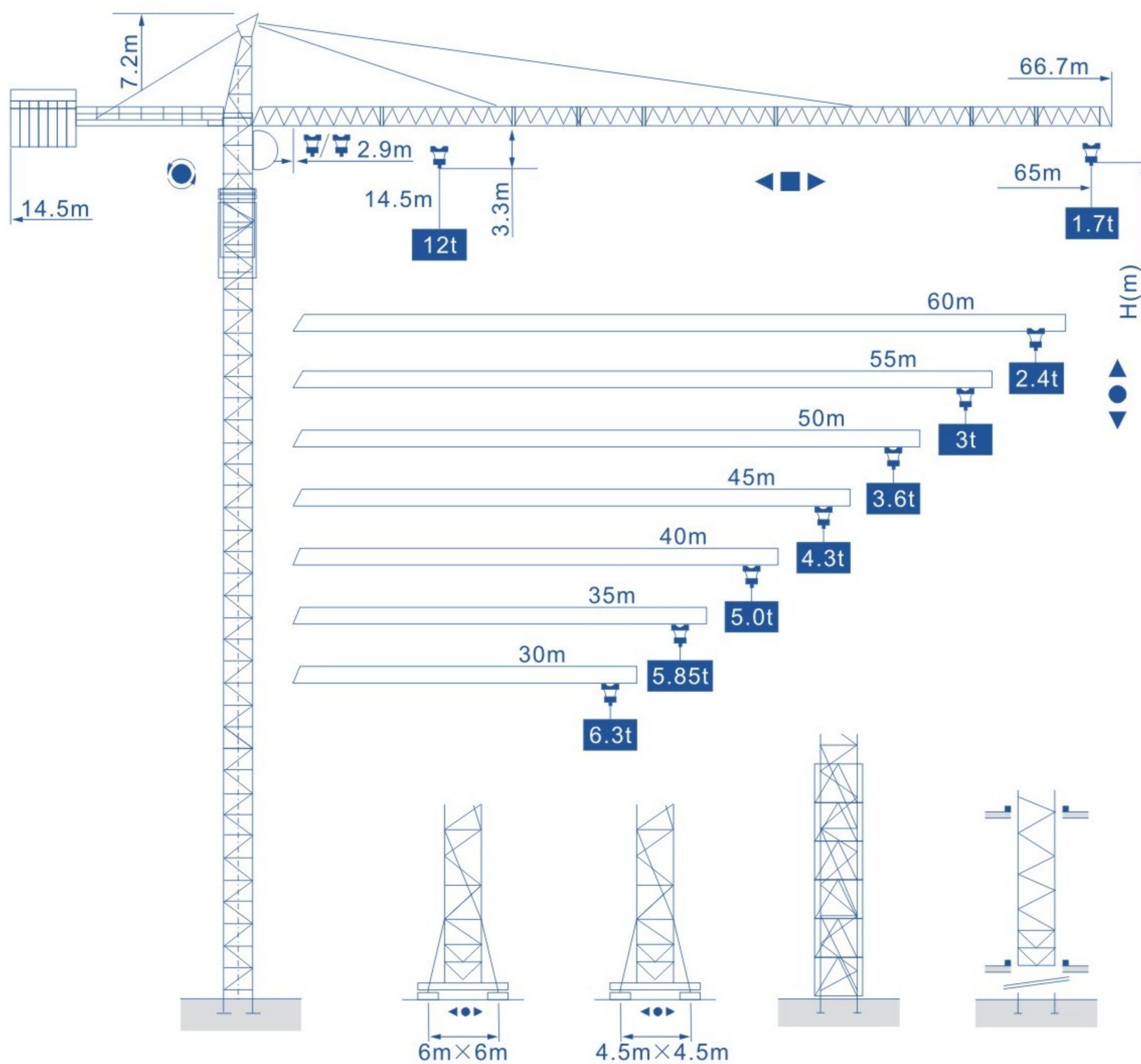




Q6517

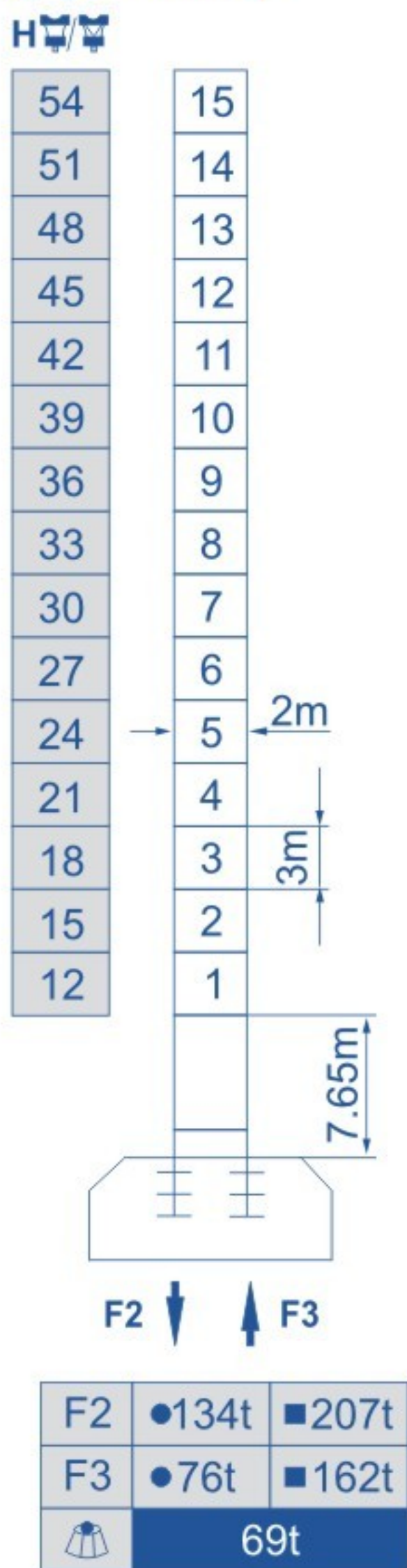
外形尺寸 Outline Dimensions



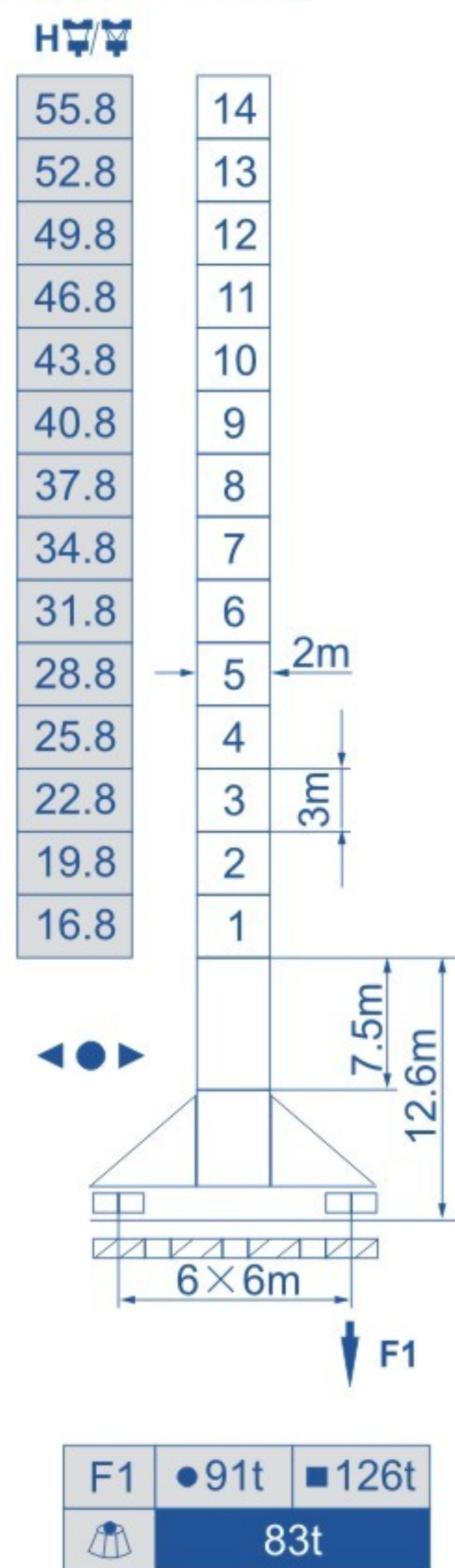


塔身截面 Mast L68B1 2m×2m

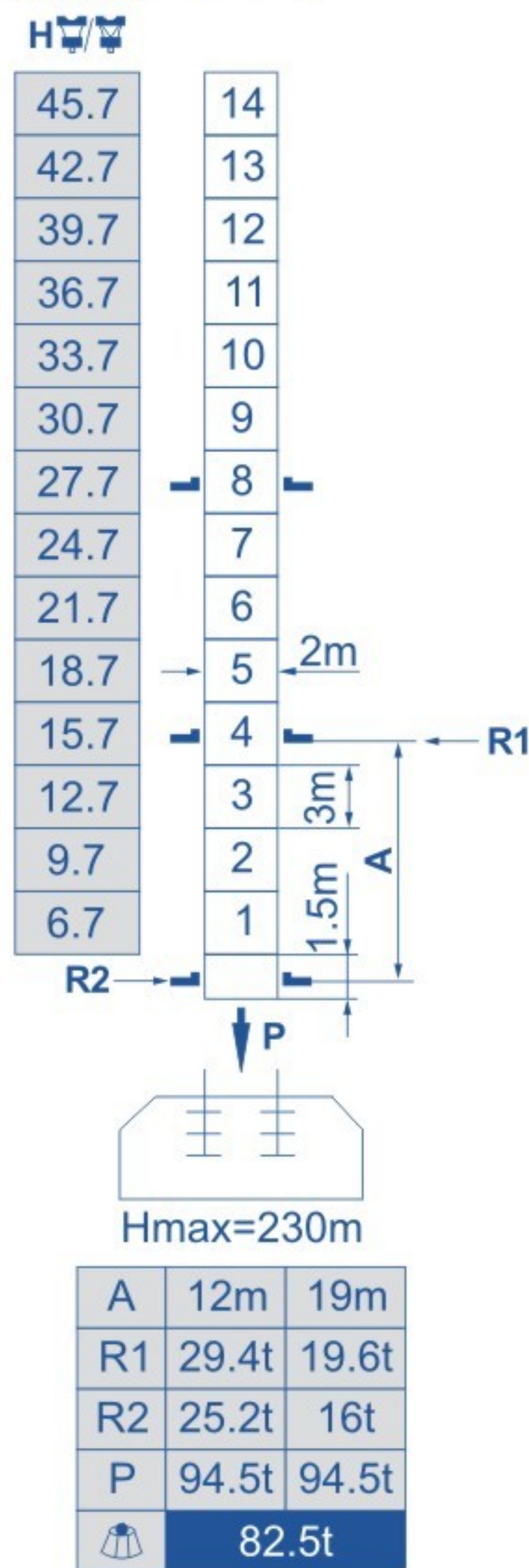
固定式 Stationary



行走式 Traveling



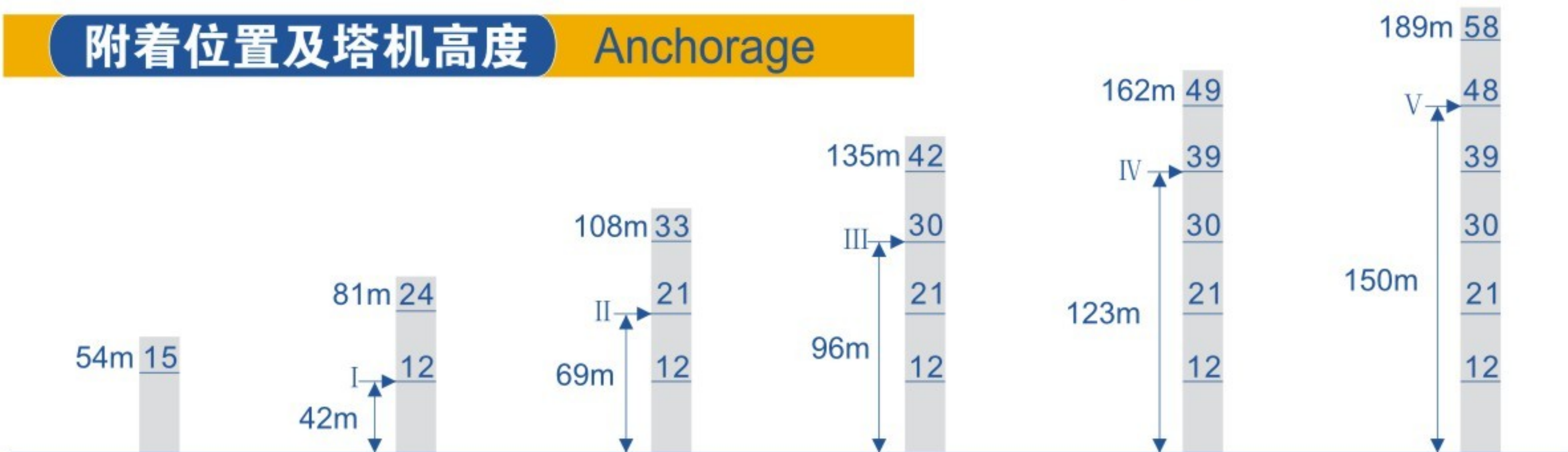
内爬式 Climbing



- 工作状态 In service
- 非工作状态 Out of service

- F=固定反力或轮压 Reactions
- 自重 Without load and ballast with longest jib and maximum height

附着位置及塔机高度 Anchorage







载荷特性表 Load Diagrams

起重臂 Jib (m)	倍率 Fall	起重幅度 Range	2.9~14.5	16	20	25	30	35	37	40	42	45	47	50	52	55	57	60	65	
65	IV	起重量(t)	12	10.7	8.18	6	5.42	4.19	4.49	3.8	3.56	3.26	3.08	2.69	2.84	2.49	2.36	2.2	1.5	
	II	Load	6						5.62	4.39	4.69	4	3.76	3.46	3.28	2.89	3.04	2.69	2.56	2.4
60	IV	起重量(t)	12	10.7	8.18	6	5.42	4.49	3.8	3.56	3.26	3.08	2.84	2.69	2.49	2.36	2.2			
	II	Load	6						5.62	4.69	4	3.76	3.46	3.28	3.04	2.89	2.69	2.56	2.4	
55	IV	起重量(t)	12	9.3	8	6	5.8	5	4.7	4.3	4	3.7	3.5	3.2	3	2.8				
	II	Load	6						5.2	4.9	4.5	4.2	3.9	3.7	3.4	3.2	3			
50	IV	起重量(t)	12	9.8	7.5	7.1	6	5.8	5.3	5	4.5	4.3	3.9	3.7	3.4					
	II	Load	6						5.5	5.2	4.7	4.5	4.1	3.9	3.6					
45	IV	起重量(t)	12	9.1	10.2	7.8	7.1	6.2	5.8	5.2	4.8	4.4	4.1							
	II	Load	6							5.4	5	4.7	4.3							
40	IV	起重量(t)	12	10.3	9.2	7.9	7.2	6.3	6	5.8	5.3	4.8								
	II	Load	6								5.5	5								
35	IV	起重量(t)	12	10.3	9.2	7.9	7.2	6.3	5.65											
	II	Load	6						5.85											
30	IV	起重量(t)	12	10.3	9.2	7.9	7.2	6.3												
	II	Load	6																	

配重配置表 Ballast

		4700kg	2000kg	1000kg	kg
65m	14.5m	5		1	24500
60m	14.5m	5			23500
55m	14.5m	4	1		20800
50m	12m	3	2		18100
45m	12m	4	1		20800
40m	12m	4			18800
35m	12m	3			14100

机构特性 Specifications (Mechanisms)

名称 Items	机构代号 Mechanism	工作速度 (m/min) Speed	起重量 (t) Hoist Weight	容绳量 (m) Rope Capacity	电动机 (kw) Motor	
起升 Hoisting	70RCS30	双绳 2 fall	0-40	6	525 >525*	51.5
			0-80	3		
		四绳 4 fall	0-20	12		
			0-40	6		
	75LVF30BS	双绳 2 fall	0-40	6	525 >525* 变频调速 Frequency Control	55
			0-60	4		
			0-80	3		
		四绳 4 fall	0-20	12		
			0-30	8		
			0-40	6		
变幅 Trolleying	X120K	16-34-44			堵转力矩 Torque 120Nm	
	DVF120	0-60	变频调速 Frequency Control		堵转力矩 Torque 120Nm	
回转 Slewing	RCV120	0-0.7r/min			堵转力矩 Torque 2×120Nm	
	RVF120		变频调速 Frequency Control		堵转力矩 Torque 2×120Nm	
行走 Traveling	RT443	0-12.5-25			4×1.7/3.4	
	18TVF	0-25	变频调速 Frequency Control		4×3.4	
电源 Power	380V/50Hz 380V/60Hz 440V/60Hz					

*根据用户特殊要求提供 To be supplied as per client's specific requirements