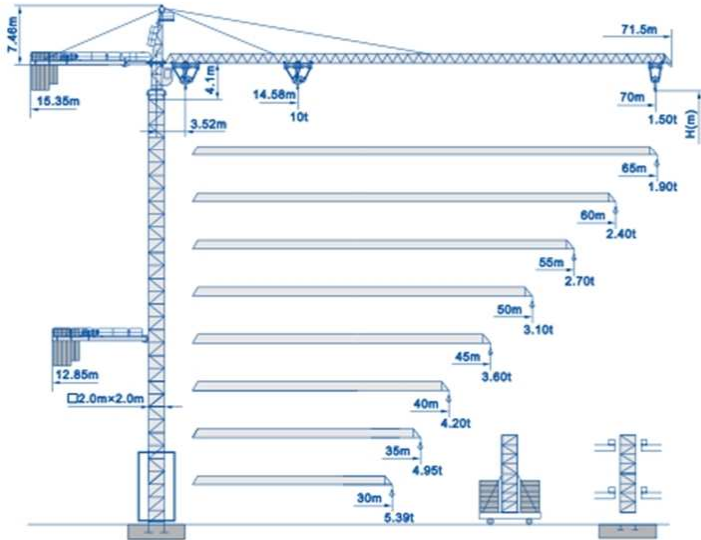
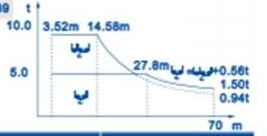


QTZ160(7015-10)



Yük Diyagramı Load Diagrams

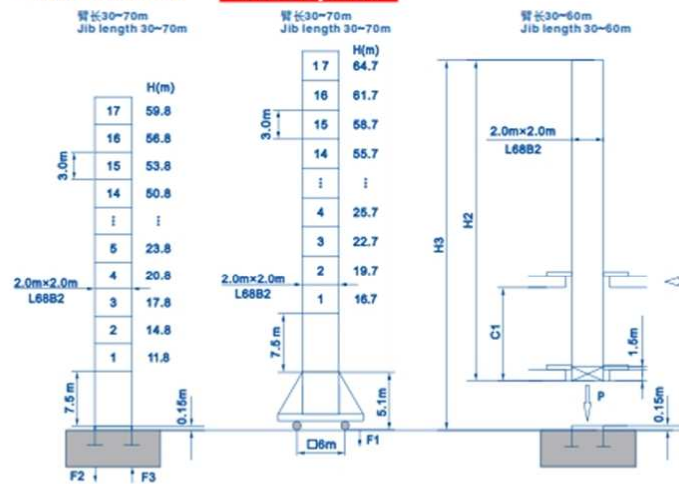
臂长 (m) Jib length	最大载荷 Q max	最大幅度 R max	倍率 Fall	幅度R (m)/载荷Q (t)											
				15m	20m	25m	30m	35m	40m	45m	50m	55m	60m	65m	70m
70	5.0	27.80	II	5.00	5.00	5.00	4.57	3.79	3.21	2.76	2.41	2.12	1.88	1.67	1.50
	10.0	14.58	IV	9.66	6.97	5.11	4.01	3.23	2.65	2.21	1.85	1.56	1.32	1.12	0.94
65	5.0	30.33	II	5.00	5.00	5.00	5.00	4.21	3.58	3.09	2.70	2.39	2.12	1.90	
	10.0	15.86	IV	10.00	7.55	5.71	4.51	3.66	3.02	2.53	2.15	1.83	1.56	1.34	
60	5.0	33.19	II	5.00	5.00	5.00	5.00	4.70	4.00	3.46	3.04	2.69	2.40		
	10.0	17.31	IV	10.00	8.41	6.39	5.07	4.14	3.44	2.91	2.48	2.13	1.84		
55	5.0	33.29	II	5.00	5.00	5.00	5.00	4.71	4.02	3.48	3.05	2.70			
	10.0	17.36	IV	10.00	8.44	6.42	5.09	4.15	3.46	2.92	2.49	2.14			
50	5.0	33.73	II	5.00	5.00	5.00	5.00	4.79	4.08	3.53	3.10				
	10.0	17.58	IV	10.00	8.57	6.52	5.18	4.23	3.52	2.98	2.54				
45	5.0	34.23	II	5.00	5.00	5.00	5.00	4.87	4.15	3.60					
	10.0	17.84	IV	10.00	8.72	6.64	5.28	4.31	3.60	3.04					
40	5.0	34.55	II	5.00	5.00	5.00	5.00	4.92	4.20						
	10.0	18.00	IV	10.00	8.81	6.71	5.34	4.37	3.64						
35	5.0	34.70	II	5.00	5.00	5.00	5.00	4.95							
	10.0	18.08	IV	10.00	8.86	6.75	5.37	4.39							
30	5.0	30.00	II	5.00	5.00	5.00	5.00								
	10.0	18.14	IV	10.00	8.90	6.78	5.39								



Kuyruk Taşları Ballast

臂长(m) Jib length	配重种类(Type of ballast)			重量 (t) Weight
	A (4.80)	B (4.20)	C (3.40)	
30m	1	-	2	11.6
35m	2	1	-	13.8
40m	-	2	2	15.2
45m	2	1	1	17.2
50m	-	2	2	15.2
55m	1	1	2	15.8
60m	3	1	-	18.6
65m	2	1	2	20.6
70m	3	1	1	22.0

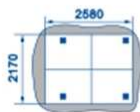
Masts Reactions



F2	•117t	•197t
F3	•74t	•154t
	•62.3t	

F1	•102t	•118t
	•68t	

R	22.8t
P	86t

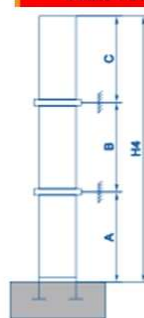


C1	12-15m
H2	37.5m
H3	200m

塔机工作状态风速 20m/s
非工作状态风速 42m/s
In-service wind speed up to 20m/s.
Out-of-service wind speed up to 42m/s

*当实际附着高度H3大于给定高度时, 请联系我们。
*When the actual height is greater than the given height, please contact us.

Sabit Yüksekliği Anchorage



臂长70米 Jib length 70m	n				
	1	2	3	4	5
A (m)	48.15				
MAST	L68B2				
n1	30	42	54	65	76
H4 (m)	97.65	133.65	169.65	202.65	235.65
n2	14	27	39	51	62
H5 (m)	48.15	87.15	123.15	159.15	192.15
B (m)	-	39	36	36	33
C (m)	49.5	46.5	46.5	43.5	43.5

*当实际附着高度H4大于给定高度时, 请联系我们。
*When the actual height is greater than the given height, please contact us.
n1 附着层数/Number of mast H5 附着层固定点总高度/Total height of the anchorage to floor
n2 附着层固定点对应塔身节序号/The anchorage frame fixed points correspond to the mast number

机构特性 Mechanisms

MEKANİZMA ÖZELLİKLERİ

机械性能 Mechanisms Specification	符号	速度 Speed	起升 Hoisting		变幅 Trolleying		回转 Slewing		行走 Travelling	
			速度 Speed	行程 Stroke	速度 Speed	行程 Stroke	速度 Speed	行程 Stroke	速度 Speed	行程 Stroke
起升 Hoisting	•	60LVF25	m/min	0-90	0-45	0-45	0-22.5	600m	45	
变幅 Trolleying	•	8D3V5	m/min	2.5	5.0	5.0	10.0	0-65	5.5	
回转 Slewing	•	RCV95	r/min	0-0.8	0-0.8	0-0.8	0-0.8	2x3.7		
行走 Travelling	•	RT443	m/min	12.5-25	12.5-25	12.5-25	12.5-25	4x3.4/1.7		
电网/Power Supply				380V 50Hz/440V 60Hz						
所需功率/Necessary Power				85KVA						
发电机组/Generator Sets				请向我方咨询/Consult us						