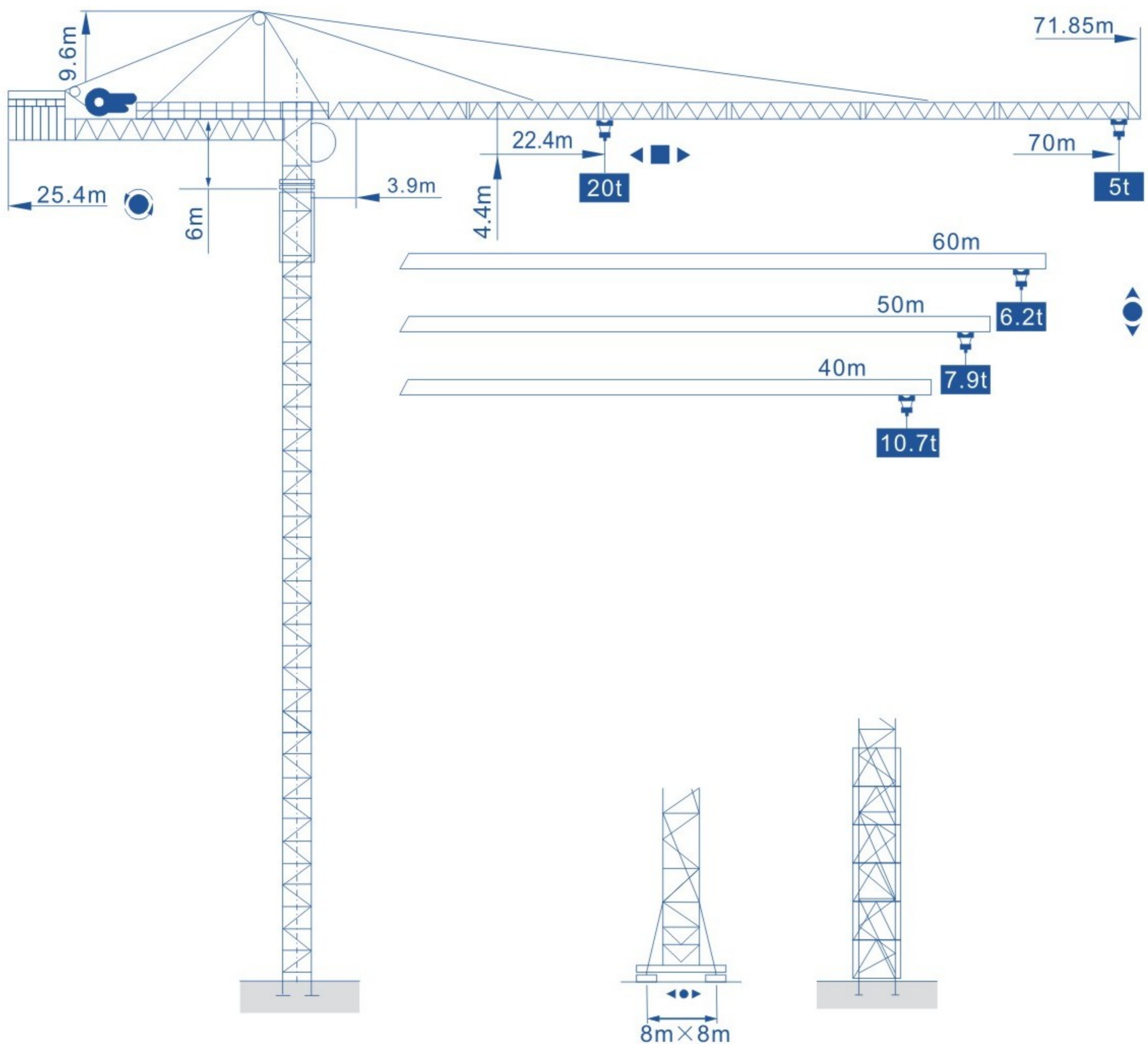




Q7050

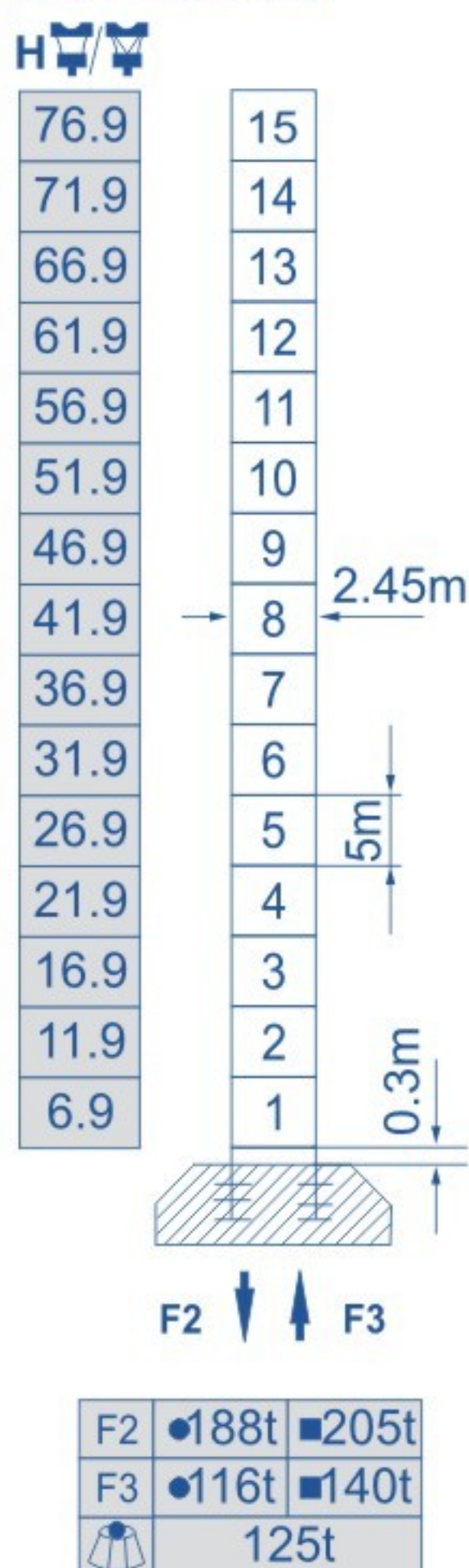
外形尺寸 Outline Dimensions



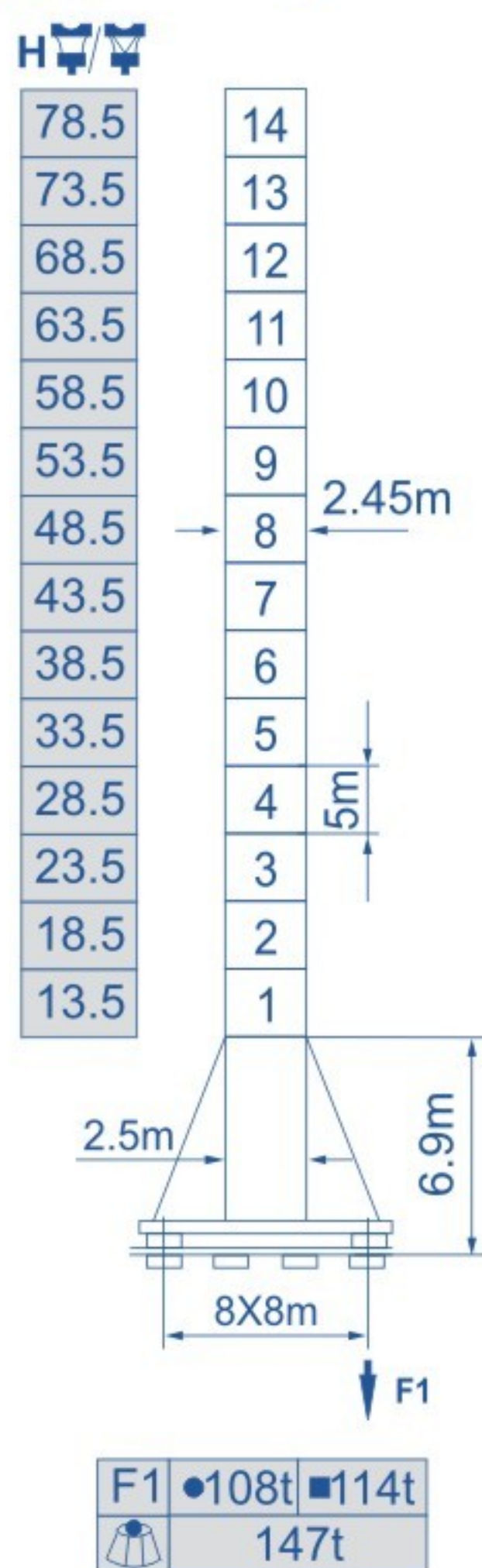


塔身截面 Mast 2.45m×2.45m

固定式 Stationary



行走式 Traveling



F=固定反力 Reactions

● 工作状态 In service

■ 非工作状态 Out of service

🏗️ 自重 Without load and ballast with longest jib and maximum height

附着位置及塔机高度 Anchorage



载荷特性表 Load Diagrams




起重臂 (m) Jib	倍率 Fall	起重幅度 (m) Range	3.9~22.4	23	27	30	33	37	40	40.2	41.3	43	47	50	53	57	60	63	67	70
70	IV	起重量(t)	20	19.4	16.1	14.3	12.7	11.1	10.1	10	9.65	9.15	8.15	7.55	6.95	6.25	5.85	5.45	4.95	4.65
	II	Load	10									9.5	8.5	7.9	7.3	6.6	6.2	5.8	5.3	5

起重臂 (m) Jib	倍率 Fall	起重幅度 (m) Range	3.9~22.4	23	27	30	33	37	40	40.2	41.3	43	47	50	53	57	60
60	IV	起重量(t)	20	19.4	16.1	14.3	12.7	11.1	10.1	10	9.65	9.15	8.15	7.55	6.95	6.25	5.85
	II	Load	10									9.5	8.5	7.9	7.3	6.6	6.2

起重臂 (m) Jib	倍率 Fall	起重幅度 (m) Range	3.9~22.4	23	27	30	33	37	40	40.2	41.3	43	47	50
50	IV	起重量(t)	20	19.4	16.1	14.3	12.7	11.1	10.1	10	9.65	9.15	8.15	7.55
	II	Load	10									9.5	8.5	7.9

起重臂 (m) Jib	倍率 Fall	起重幅度 (m) Range	3.9~23.4	27	30	33	37	40
40	IV	起重量(t)	20	17	15	13.4	11.7	10.7
	II	Load	10					

配重配置表 Ballast

			5500kg	3400kg	 kg
70m	25.4m	5			27500
60m	25.4m	3		2	23300
50m	25.4m	1		4	19100
40m	25.4m	2		1	14400



机构特性 Specifications (Mechanisms)

名称 Items	机构代号 Mechanism	工作速度 (m/min) Speed		起重量 (t) Hoist Weight	容绳量 (m) Rope Capacity	电动机 (kw) Motor
起升 Hoisting	70RCS50	双绳 2 fall	0-25	10	525 >525m*	51.5
			0-50	5		
		四绳 4 fall	0-12.5	20		
			0-25	10		
	120LVF50B2	双绳 2 fall	0-44	10	640 >640m* 变频调速 Frequency Control	90
			0-66	6.6		
			0-88	5		
		四绳 4 fall	0-22	20		
			0-33	13.2		
			0-44	10		
变幅 Trolleying	X185K	0-15-30-60			堵转力矩 Torque 185Nm	
	DVF185	0-60		变频调速 Frequency Control	堵转力矩 Torque 185Nm	
回转 Slewing	RCV185	0-0.7r/min			堵转力矩 Torque 3×185Nm	
	RVF185			变频调速 Frequency Control	堵转力矩 Torque 3×185Nm	
行走 Traveling	RT643	0-15-30			6×2.6/5.2	
	42TVF	0-30		变频调速 Frequency Control	6×5.2	
电源 Power	380V/50Hz 380V/60Hz 440V/60Hz					

*根据用户特殊要求提供 To be supplied as per client's specific requirements