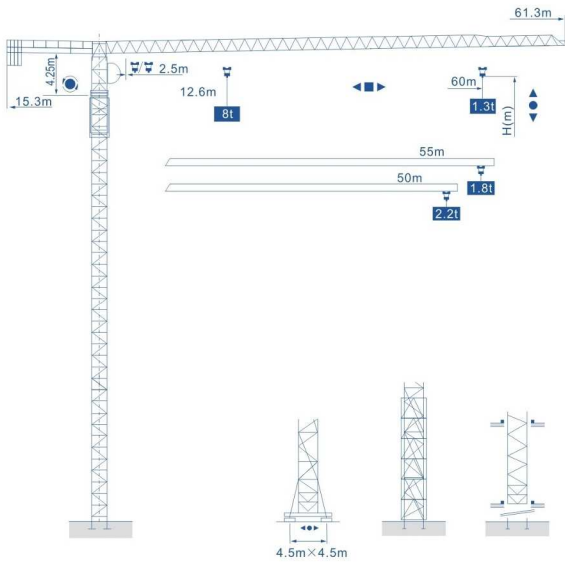




**QP6013(8t)**

**外形尺寸 Anahat Ölçüleri Outline Dimensions**



ISO9001, CE, GOST SERTİFİKALARI www.kasirgakulevinc.com 107 ISO9001, CE, GOST AUTHENTICATION

**QP6013(8t)**

**塔身截面 Mast Ölçüleri Mast L46A1 1.6x1.6 m**

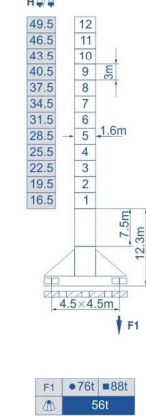
**Sabit Sistem**



F2	118t	135t
F3	78t	105t
50t		

**Yürüylü Sistem**

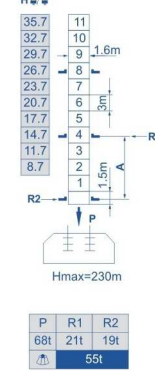
**行走式 Traveling**



F1	76t	88t
56t		

**Bina İçi Tırmanma Sistemi**

**内爬式 Climbing**



P	R1	R2
68t	21t	19t
55t		

- 工作状态 In service
- 非工作状态 Out of service
- F=固定反力或轮压 Reactions
- △ 自重 Without load and ballast with longest jib and maximum height

**附着位置及塔机高度 Sabit Yüksekliği Anchorage**



108 www.kasirgakulevinc.com ISO9001, CE, GOST SERTİFİKALARI ISO9001, CE, GOST AUTHENTICATION

**载荷特性表 Yük Diyagramı Load Diagrams**

起重臂 (m) Jib	倍率 Fall	起重幅度 (m) Range	2.5~12.6	13	15	18	20	22	23.9	25	28	30	35	38	42	45	48	50	55	60
60	IV	起重量(t) Load	8	7.75	6.65	5.46	4.87	4.38	3.8	3.6	3.14	2.88	2.37	2.13	1.86	1.69	1.54	1.45	1.26	1.1
	II		4	3.8	3.34	3.08	2.57	2.33	2.06	1.89	1.74	1.65	1.46	1.3						

起重臂 (m) Jib	倍率 Fall	起重幅度 (m) Range	2.5~14.79	16	18	20	22	25	28	30	35	38	40	45	48	50	52	55
55	IV	起重量(t) Load	8	7.36	6.49	5.79	5.22	4.54	3.8	3.5	2.9	2.62	2.45	2.1	1.93	1.82	1.73	1.6
	II		4	3.7	3.1	2.82	2.65	2.3	2.13	2.02	1.93	1.8						

起重臂 (m) Jib	倍率 Fall	起重幅度 (m) Range	2.5~15.79	18	20	22	25	28	29.9	32	35	38	40	42	45	48	50
50	IV	起重量(t) Load	8	6.96	6.22	5.6	4.88	4.3	3.8	3.5	3.14	2.84	2.67	2.51	2.29	2.11	2
	II		4	3.7	3.34	3.04	2.87	2.71	2.49	2.31	2.2						

**配重配置表 Kuyruk Taşları Ballast**

起重臂 (m) Jib	起重幅度 (m) Range	2200kg	kg
60m	15.3m	7	15400
55m	15.3m	6	13200
50m	15.3m	5	11000

ISO9001, CE, GOST SERTİFİKALARI www.kasirgakulevinc.com 109 ISO9001, CE, GOST AUTHENTICATION

**QP6013(8t)**

**Mekanizma Özellikleri 机构特性 Specifications (Mechanisms)**

Systemler Items	Mekanizmalar Mechanism	Hız (m/min) Speed (m/min)	Kaldırma Ağırlığı (t) Hoist Weight (t)	Halat Kapasitesi (m) Rope Capacity (m)	Motor Güçleri (kw) Motor (kw)	
起升 Hoisting	40PC20	双绳 2 fall	0-6.6	4	420 >420*	30/30/5.5
			0-35	4		
		0-70	2			
		0-3.3	8			
	40LVF20	四绳 4 fall	0-17.5	8		
			0-35	4		
		双绳 2 fall	0-40	4	420 >420* 变频调速 Frequency Control	30
			0-66	2.4		
0-80	2					
0-20	8					
四绳 4 fall	0-33	4.8				
	0-40	4				
变幅 Trolleying	DVF95	0-60			堵转力矩 Torque 95Nm	
	X96L	15-30-60			堵转力矩 Torque 95Nm	
回转 Slewing	RVF95	0-0.7r/min			堵转力矩 Torque 2×95Nm	
	RCV95		堵转力矩 Torque 2×95Nm			
行走 Traveling	RT433	0-12.5-25			4×1.7/3.4	
	14TVF	0-25	变频调速 Frequency Control		2×5.2	
电源 Power			380V/50Hz 380V/60Hz 440V/60Hz			

110 www.kasirgakulevinc.com ISO9001, CE, GOST SERTİFİKALARI ISO9001, CE, GOST AUTHENTICATION