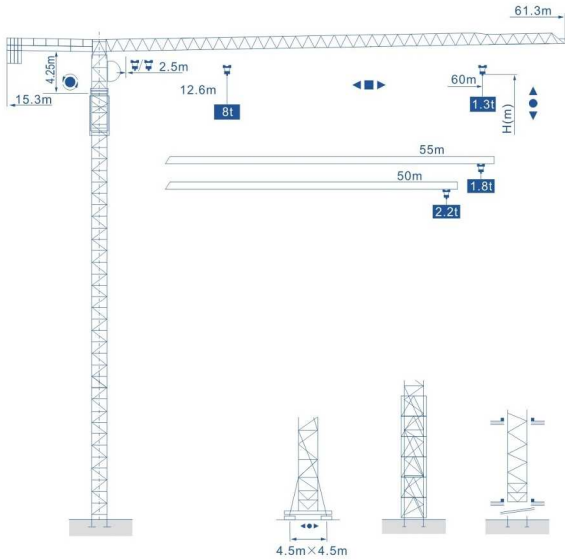




QP6013(8t)

外形尺寸 Anahat Ölçüleri Outline Dimensions



ISO9001, CE, GOST SERTİFİKALARI www.kasirgakulevinc.com 107
ISO9001, CE, GOST AUTHENTICATION

QP6013(8t)

塔身截面 Mast Ölçüleri Mast L46A1 1.6x1.6 m

Sabit Sistem

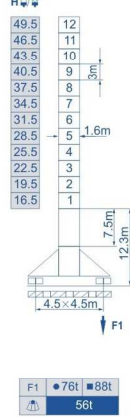
固定式 Stationary



F2 •118t •135t
F3 •78t •105t
50t

Yürüyüşlü Sistem

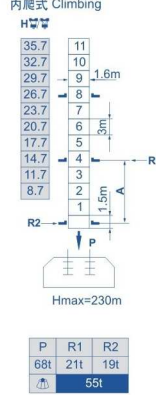
行走式 Traveling



F1 •76t •88t
56t

Bina İçi Tırmanma Sistemi

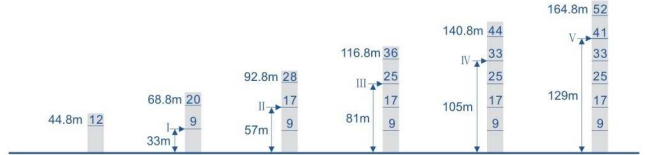
内爬式 Climbing



P R1 R2
55t

● 工作状态 In service ■ 非工作状态 Out of service F=固定反力或轮压 Reactions 自重 Without load and ballast with longest jib and maximum height

附着位置及塔机高度 Sabit Yüksekliği Anchorage



108 www.kasirgakulevinc.com ISO9001, CE, GOST SERTİFİKALARI ISO9001, CE, GOST AUTHENTICATION



QP6013(8t)

载荷特性表 Yük Diyagramı Load Diagrams

起重臂 (m) Jib	倍率 Fall	起重幅度 (m) Range	2.5~12.6	13	15	18	20	22	23.9	25	28	30	35	38	42	45	48	50	55	60
60	IV	起重重量(t) Load	8	7.75	6.65	5.46	4.87	4.38	3.8	3.6	3.14	2.88	2.37	2.13	1.86	1.69	1.54	1.45	1.26	1.1
	II		4	3.8	3.34	3.08	2.57	2.33	2.06	1.89	1.74	1.65	1.46	1.3						

起重臂 (m) Jib	倍率 Fall	起重幅度 (m) Range	2.5~14.79	16	18	20	22	25	28	30	35	38	40	45	48	50	52	55
55	IV	起重重量(t) Load	8	7.36	6.49	5.79	5.22	4.54	3.8	3.5	2.9	2.62	2.45	2.1	1.93	1.82	1.73	1.6
	II		4	3.7	3.1	2.82	2.65	2.3	2.13	2.02	1.93	1.8						

起重臂 (m) Jib	倍率 Fall	起重幅度 (m) Range	2.5~15.79	18	20	22	25	28	29.9	32	35	38	40	42	45	48	50
50	IV	起重重量(t) Load	8	6.96	6.22	5.6	4.88	4.3	3.8	3.5	3.14	2.84	2.67	2.51	2.29	2.11	2
	II		4	3.7	3.34	3.04	2.87	2.71	2.49	2.31	2.2						

配重配置表 Kuyruk Taşları Ballast

起重臂 (m) Jib	起重幅度 (m) Range	2200kg	kg
60m	15.3m	7	15400
55m	15.3m	6	13200
50m	15.3m	5	11000

ISO9001, CE, GOST SERTİFİKALARI www.kasirgakulevinc.com 109
ISO9001, CE, GOST AUTHENTICATION



QP6013(8t)

Mekanizma Özellikleri 机构特性 Specifications (Mechanisms)

Statemler Items	Mekanizmalar Mechanism	Hız (m/min) Speed (m/min)	Kaldırma Ağırlığı (t) Hoist Weight (t)	Halat Kapasitesi (m) Rope Capacity (m)	Motor Güçleri (kw) Motor (kw)	
起升 Hoisting	40PC20	双绳 2 fall	0-6.6	4	420 >420*	30/30/5.5
		0-35	4			
		0-70	2			
		0-3.3	8			
	40LVF20	四绳 4 fall	0-17.5	8	420 >420* 变频调速 Frequency Control	30
		0-35	4			
		双绳 2 fall	0-40	4		
		0-66	2.4			
40LVF20	四绳 4 fall	0-80	2			
		0-20	8			
		0-33	4.8			
		0-40	4			
变幅 Trolleying	DVF95	0-60			堵转力矩 Torque 95Nm	
	X96L	15-30-60			堵转力矩 Torque 95Nm	
回转 Slewing	RVF95	0-0.7r/min			堵转力矩 Torque 2×95Nm	
	RCV95		堵转力矩 Torque 2×95Nm			
行走 Traveling	RT433	0-12.5-25			4×1.7/3.4	
	14TVF	0-25	变频调速 Frequency Control		2×5.2	
电源 Power			380V/50Hz 380V/60Hz 440V/60Hz			

110 www.kasirgakulevinc.com ISO9001, CE, GOST SERTİFİKALARI ISO9001, CE, GOST AUTHENTICATION