

QLCM

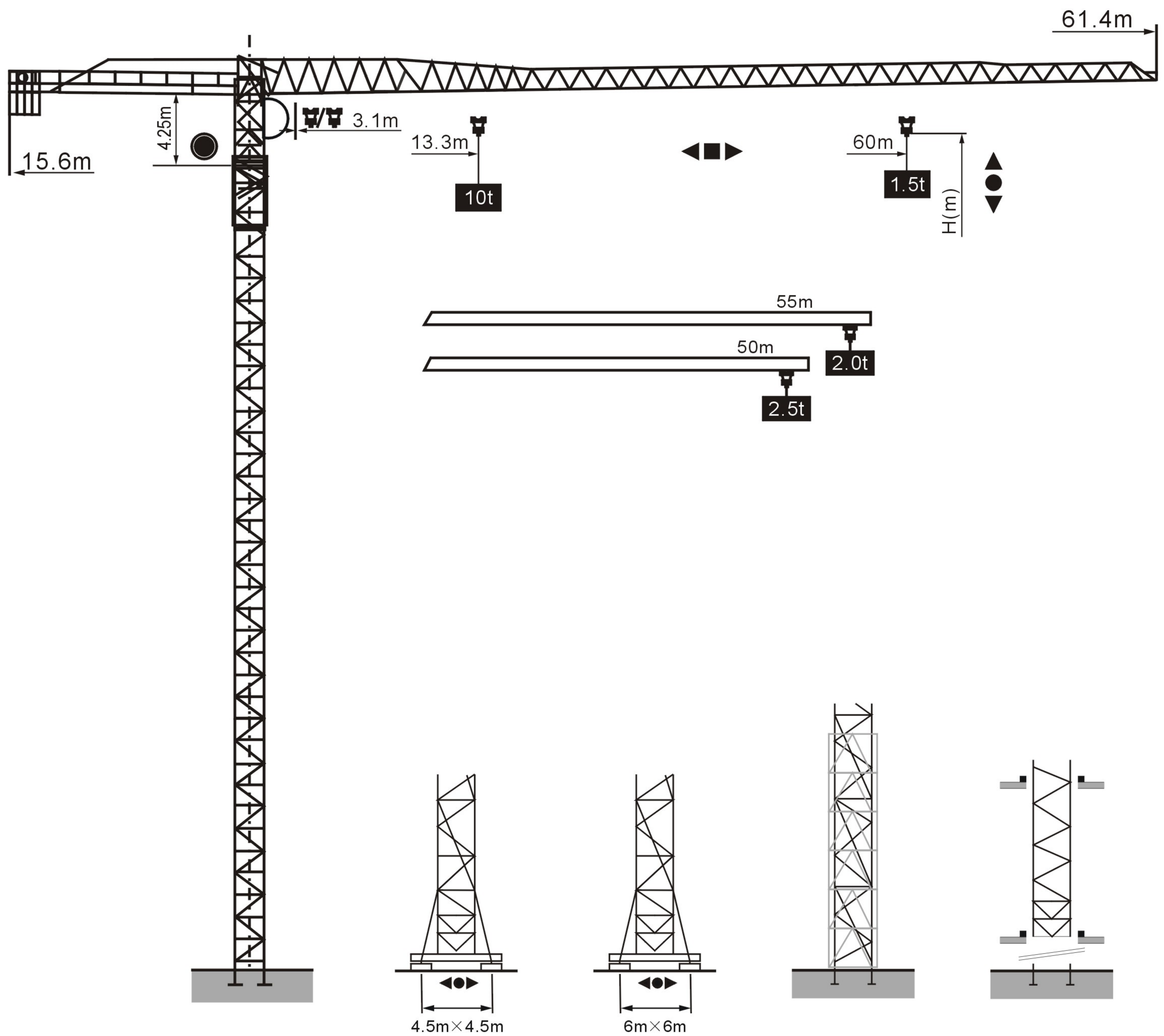
QTZ125P

10t

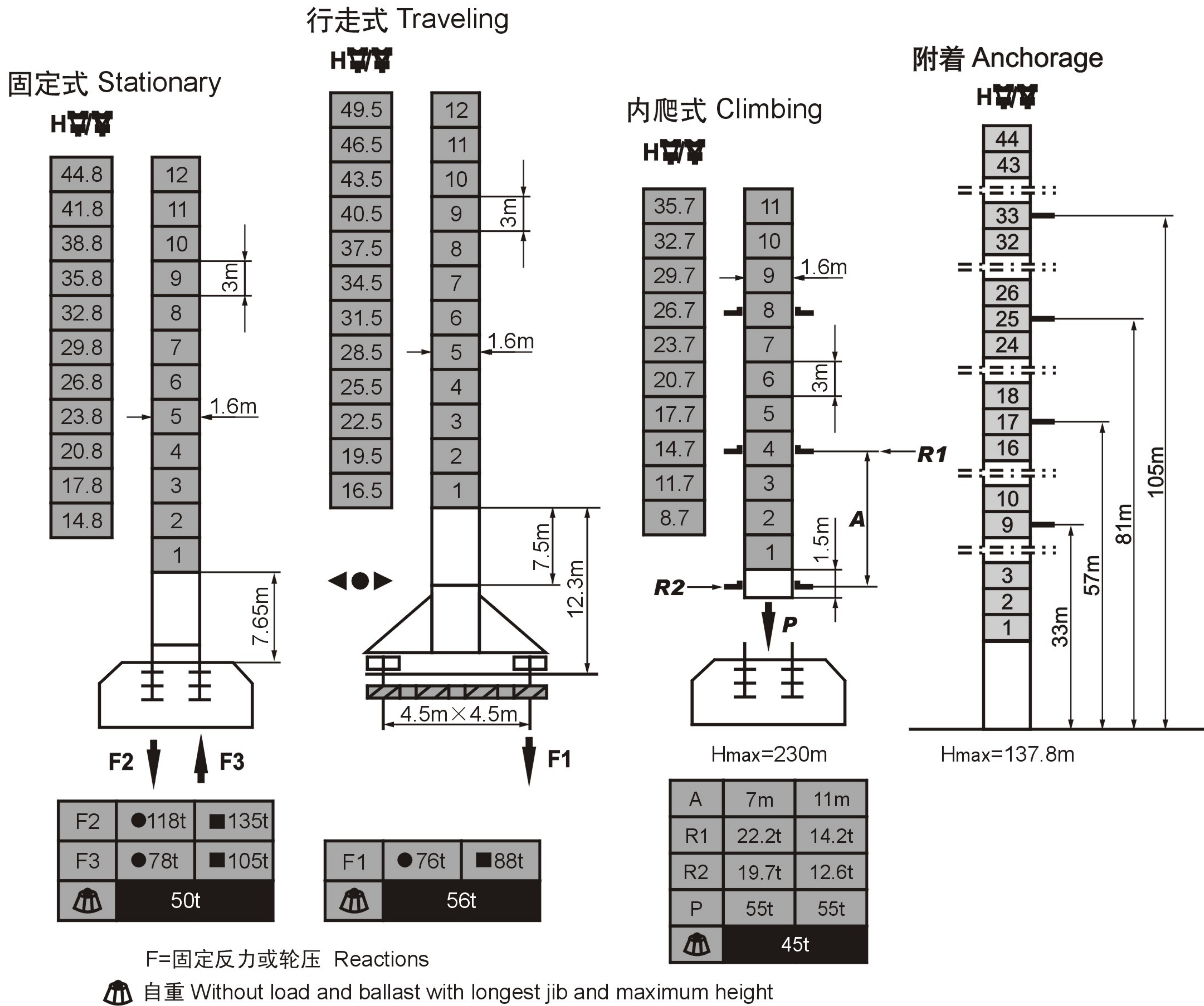
QP6015

外形尺寸

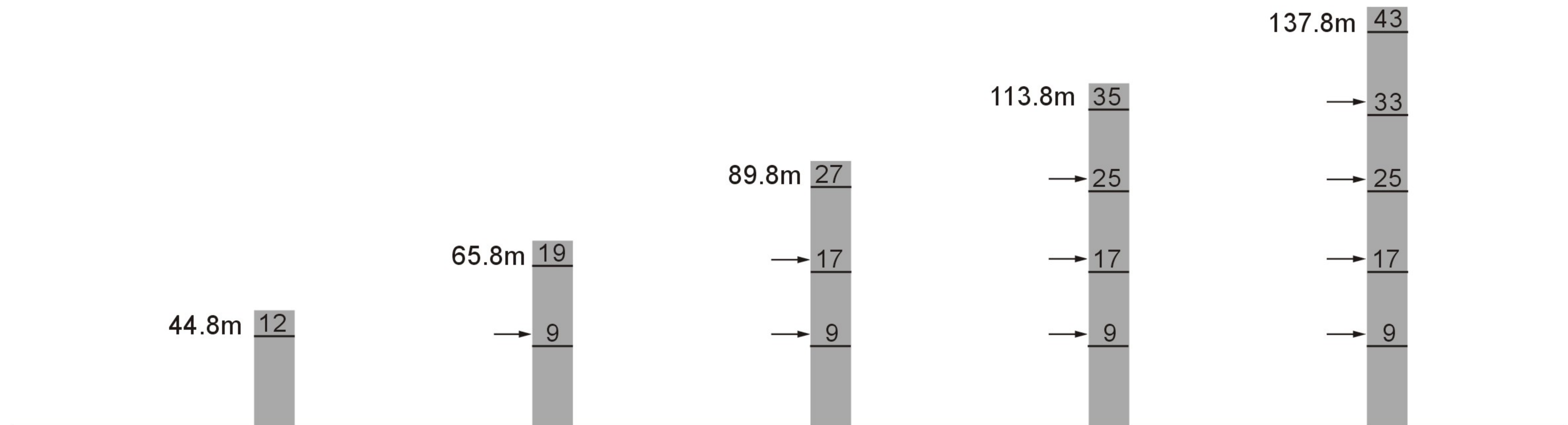
Outline Dimensions



塔身截面 Mast L46A1 1.6m×1.6m



附着示意图 Anchorage



载荷特性表

Load Diagrams




起重臂 (m) Jib	倍率 Fall	起重幅度 (m) Range	3.1 ~ 13.3	14.58	16.11	17	23.74	24.06	25	27	30	33	35	37	40	43	45	47	50	53	55	57	60
			60	IV	起重量(t) Load	10	9	8	7.5	5	4.8	4.51	4.15	3.65	3.22	2.97	2.75	2.47	2.22	2.08	1.94	1.76	1.61
II	5							4.71	4.35	3.85	3.42	3.17	2.95	2.67	2.42	2.28	2.14	1.96	1.81	1.71	1.62	1.5	

起重臂 (m) Jib	倍率 Fall	起重幅度 (m) Range	3.1 ~ 14.76	16.16	17.87	18.88	21.31	26.4	26.8	27	30	33	35	37	40	43	45	47	50	53	55
			55	IV	起重量(t) Load	10	9	8	7.5	6.5	5	4.8	4.75	4.17	3.71	3.43	3.19	2.87	2.59	2.43	2.28
II	5							4.95	4.37	3.91	3.63	3.39	3.07	2.79	2.63	2.48	2.28	2.11	2		

起重臂 (m) Jib	倍率 Fall	起重幅度 (m) Range	3.1 ~ 15.74	17.23	19.07	20.15	21.37	24.33	28.3	28.67	30	33	35	37	40	43	45	47	50
			50	IV	起重量(t) Load	10	9	8	7.5	7	6	5	4.8	4.54	4.02	3.74	3.48	3.14	2.85
II	5							4.74	4.22	3.94	3.68	3.34	3.05	2.87	2.71	2.5			

配重配置表

Ballast

			2080kg	800kg	 Kg
60m	15.6m	7	1	15360	
55m	15.6m	7		14560	
50m	15.6m	6		12480	

机构特性

Specifications (Mechanisms)

名称 Items	机构代号 Mechanism	工作速度 (m/min) Speed		起重量 (t) Hoist Weight	容绳量 (m) Rope Capacity	电动机 (kw) Motor
起升 Hoisting	70RCS25	双绳 2 fall	0-50	5	540 >540*	51.5
			0-100	2.5		
		四绳 4 fall	0-25	10		
			0-50	5		
	75LVF25	双绳 2 fall	0-50	5	650 >650* 变频调速 Frequency Control	55
			0-75	3		
			0-100	2		
		四绳 4 fall	0-25	10		
			0-37.5	6		
			0-50	4		
变幅 Trolleying	X96L	15-30-60				堵转力矩 Torque 95Nm
	DVF95	0-60		变频调速 Frequency Control		堵转力矩 Torque 95Nm
回转 Slewing	RCV95	0-0.7r/min				堵转力矩 Torque 2×95Nm
	RVF95			变频调速 Frequency Control		堵转力矩 Torque 2×95Nm
行走 Traveling	RT324	0-12.5-25				2×2.6/5.2
	RT443	0-12.5-25				4×1.7/3.4
	18TVF	0-25		变频调速 Frequency Control		4×3.4
	14TVF	0-25		变频调速 Frequency Control		2×5.2
电源 Power	380V/50Hz 440V/60Hz					

*根据用户特殊要求提供 To be supplied as per client's specific requirements