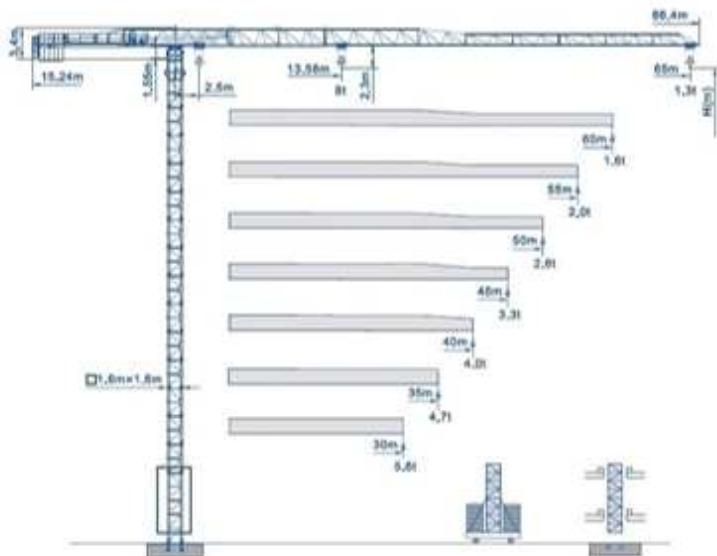


QP6513-8



Yük Diyagramı Load Diagrams

臂长 (m) Jib length	最大载荷 (t) Q max	最大幅度 (m) R max	倍率 F&D	幅度R (m) / 载荷Q (t)										
				15m	20m	25m	30m	35m	40m	45m	50m	55m	60m	65m
65	4.00	25.49	II	4.00	4.00	4.00	3.32	2.78	2.38	2.07	1.82	1.61	1.44	1.30
	8.00	13.88	IV	7.17	5.21	4.06	3.29	2.75	2.35	2.04	1.79	1.68	1.41	1.27
60	4.00	27.80	II	4.00	4.00	4.00	3.64	3.05	2.62	2.28	2.01	1.78	1.60	
	8.00	14.88	IV	7.81	5.89	4.44	3.61	3.02	2.59	2.25	1.98	1.78	1.67	
55	4.00	30.27	II	4.00	4.00	4.00	4.00	3.40	2.81	2.54	2.24	2.00		
	8.00	16.08	IV	8.00	6.30	4.82	4.01	3.37	2.88	2.51	2.21	1.97		
50	4.00	34.28	II	4.00	4.00	4.00	4.00	3.91	3.36	2.94	2.60			
	8.00	15.17	IV	8.00	7.21	5.64	4.61	3.88	3.33	2.91	2.67			
45	4.00	37.94	II	4.00	4.00	4.00	4.00	4.00	4.00	3.77	3.30			
	8.00	20.08	IV	8.00	8.00	6.30	5.16	4.36	3.74	3.27				
40	4.00	40.00	II	4.00	4.00	4.00	4.00	4.00	4.00					
	8.00	21.18	IV	8.00	8.00	6.87	5.87	4.81	3.87					
35	4.00	35.00	II	4.00	4.00	4.00	4.00	4.00						
	8.00	21.40	IV	8.00	8.00	6.78	5.84	4.87						
30	4.00	30.00	II	4.00	4.00	4.00	4.00							
	8.00	21.82	IV	8.00	8.00	6.80	5.87							

Kuyruk Taşları Ballast

臂长 (m) Jib length	配重种类 (Type of ballast)		重量 (t) Weight
	A (3.5t)	B (0.4t)	
30m	2	4	9.4
35m	3	2	11.7
40m	3	4	12.8
45m	4	1	14.8
50m	4	2	15.2
55m	4	3	15.8
60m	5	-	17.5
65m	5	1	18.1

QP6513-8

QP6513-8

塔身截面 Mast Ölçüleri Mast L46A1 1.6x1.6 m

Sabit Sistem

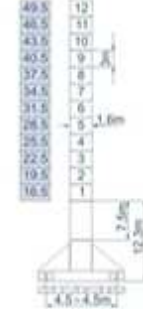
固定式 Stationary
H型



- 工作状态 In service
- 非工作状态 Out of service

行式 Yürüyüşlü Sistem

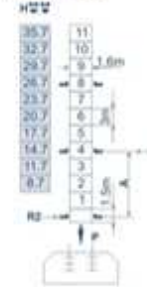
行走式 Traveling
H型



- F=固定反力或轮压 Reactions
- 自重 Without load and ballast with longest jib and maximum height

内爬式 Bina İçi

内爬式 Climbing
H型



附着位置及塔机高度 Sabit Yüksekliği Anchorage



Mekanizma Özellikleri

机构特性 Specifications (Mechanisms)

System Name	Mechanism	Hz (m/min) Speed (m/min)	Kaldırma Ağırlığı (t) Rope Weight (t)	Malat Kapasitesi (m) Rope Capacity (m)	Motor Güçleri (kw) Motor (kw)	
起升 Hoisting	40PC20	双绳 2 fall	0-6.6	4	420 >420°	30/30/5.5
			0-35	4		
		四绳 4 fall	0-70	2		
			0-3.3	8		
	40LVF20	双绳 2 fall	0-17.5	8	420 >420° 变频调速 Frequency Control	30
			0-35	4		
		四绳 4 fall	0-40	4		
			0-66	2.4		
变频调速 Frequency Control	0-80	2				
	0-20	8				
变频调速 Frequency Control	变频调速 Frequency Control	0-33	4.8			
		0-40	4			
变幅 Trolleying	DVF95	0-60			绳拉力矩 Torque 95Nm	
	X9BL	15-30-60			绳拉力矩 Torque 95Nm	
回转 Slewing	RVF95	0-0.7r/min			绳拉力矩 Torque 2×95Nm	
	RCV95				绳拉力矩 Torque 2×95Nm	
行走 Traveling	RT433	0-12.5-25			4×1.7/3.4	
行走 Traveling	14TVF	0-25		变频调速 Frequency Control	2×5.2	
电源 Power					380V/50Hz 380V/60Hz 440V/60Hz	