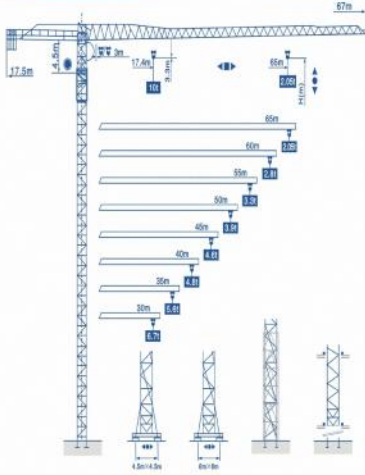




QP6520

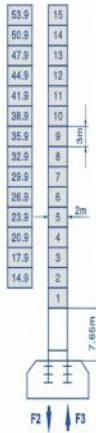
*ISO9001*CE*GOST AUTHENTICATION

外形尺寸 Anahat Ölçüleri Outline Dimensions

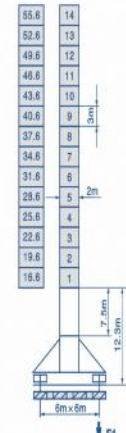


塔身截面 Mast Ölçüleri Mast L68B1 2x2 Mt.

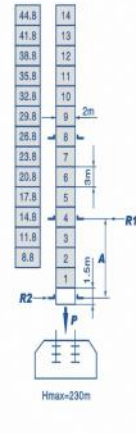
固定式 Stationary H型



行走式 Traveling H型



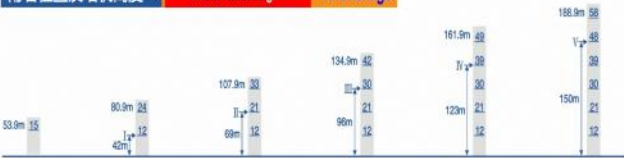
内爬式 Climbing H型



● 工作状态 In service
■ 非工作状态 Out of service

F1固定反力或轮压 Reactions
自重 Without load and ballast with longest jib and maximum height

附着位置及塔机高度 A Sabit Yüksekliği Anchorage



www.kasirgakulevinc.com

ISO9001, CE, GOST SERTİFİKALARI ISO9001, CE, GOST AUTHENTICATION

QLCM QP6520

*ISO9001*CE*GOST AUTHENTICATION

载荷特性表 Yük Diyagramı Load Diagrams

起重臂 (m) Jib	倍率 Fall	起重幅度 (m) Range	3-16	17	20	22	25	27	28.5	31.1	32	35	37	40	42	45	47	50	52	55	57	60	62	65	
65	IV	起重幅度 (m) Range	10	9.3	7.7	6.9	5.9	5.3	5	4.8	4.6	4.2	3.9	3.5	3.3	3	2.9	2.7	2.5	2.3	2.2	2.1	2	1.85	
	II	起重重量 (t) Load	5																						
60	IV	起重幅度 (m) Range	10	9.3	8.3	7.1	6.5	5.7	5.3	5	4.8	4.7	4.3	4.1	3.7	3.5	3.3	3.1	2.9	2.8	2.6				
	II	起重重量 (t) Load	5																						
55	IV	起重幅度 (m) Range	10	9.8	8.8	7.6	6.9	6.1	5.6	5.05	5	4.8	4.6	4.3	4	3.8	3.5	3.3	3.1						
	II	起重重量 (t) Load	5																						
50	IV	起重幅度 (m) Range	10	9.3	8	7.3	6.4	5.8	5.3	5	4.8	4.6	4.2	4	3.7										
	II	起重重量 (t) Load	5																						
45	IV	起重幅度 (m) Range	10	9.7	8.3	7.6	6.7	6.2	5.6	5.2	5	4.8	4.4												
	II	起重重量 (t) Load	5																						
40	IV	起重幅度 (m) Range	10	9.7	8.3	7.6	6.7	6.2	5.6	5.2	5	4.8													
	II	起重重量 (t) Load	5																						
35	IV	起重幅度 (m) Range	10	9.7	8.3	7.6	6.7	6.2	5.6																
	II	起重重量 (t) Load	5																						
30	IV	起重幅度 (m) Range	10	9.7	8.3	7.6	6.7																		
	II	起重重量 (t) Load	5																						

Mekanizma Özellikleri

机构特性 Specifications (Mechanisms)

Sistemler Items	Mekanizmalar Mechanism	Hız (m/min) Speed (m/min)	Kaldırma Ağırlığı (t) Hoist Weight (t)	Halat Kapasitesi (m) Rope Capacity (m)	Motor Güçleri (kw) Motor (kw)
起升 Hoisting	70RCS25	双绳 2 fall	0-50	5	570 >570*
		四绳 4 fall	0-100	2.5	
		四绳 4 fall	0-25	10	
	75LVF25BS	双绳 2 fall	0-50	5	680 >680* 变频调速 Frequency Control
		双绳 2 fall	0-75	3	
		四绳 4 fall	0-100	2	
变频 Trolleying	X120K	16-34-44			塔机力矩 Torque 120Nm
	DVF120	0-44		变频调速 Frequency Control	塔机力矩 Torque 120Nm
	回转 Slewing	RCV185	0-0.7r/min		塔机力矩 Torque 2 x 185Nm
行走 Traveling	RVF185			变频调速 Frequency Control	塔机力矩 Torque 2 x 185Nm
	RT443	0-12.5-25			4x1.7/3.4
行走 Traveling	18TVF	0-25		变频调速 Frequency Control	4x3.4
电源 Power			380V/50Hz 380V/60Hz 440V/60Hz		

*根据用户特殊要求提供 To be supplied as per client's specific requirements

* Yıldız işareti olanlar da müşterinin isteğine göre değişiklik yapılabilir

www.kasirgakulevinc.com

ISO9001, CE, GOST SERTİFİKALARI ISO9001, CE, GOST AUTHENTICATION