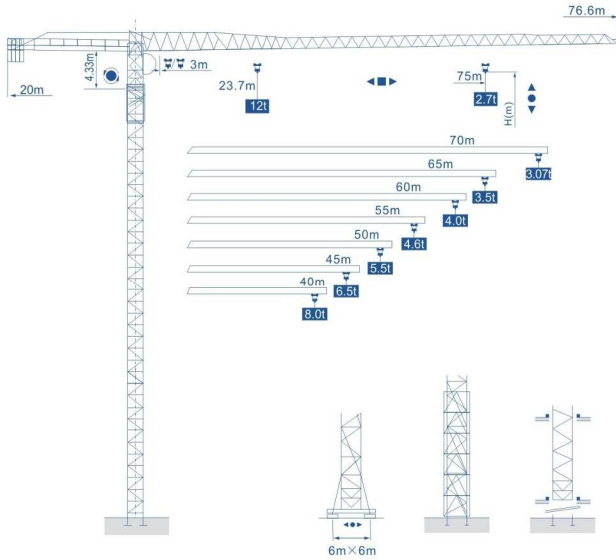
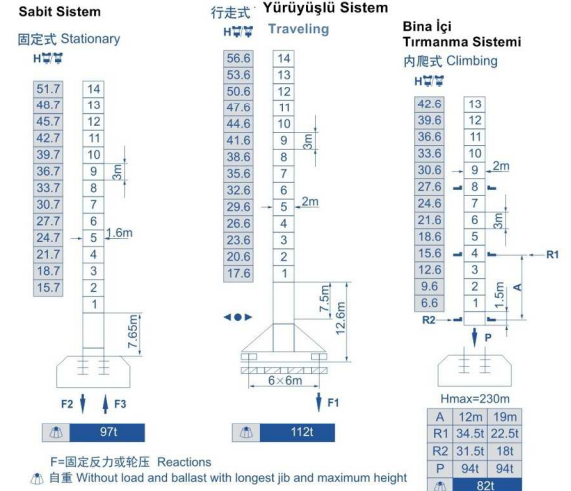




外形尺寸 Anahat Ölçüleri Outline Dimensions

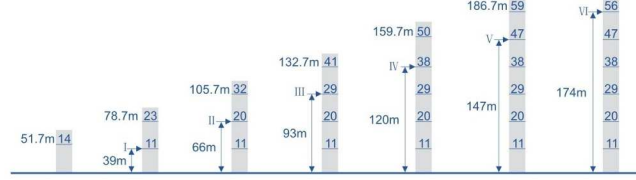


塔身截面 Mast Ölçüleri Mast L68B1 1.6x1.6 m



F=固定反力或轮压 Reactions 自重 Without load and ballast with longest jib and maximum height

附着位置及塔机高度 Sabit Yüksekliği Anchorage



载荷特性表 Yük Diyagramı Load Diagrams

起重量 Jib(m)	倍率	起重量范围 Range	25	30	35	40	42.4	45	50	55	60	63	65	68	70	73	75
75	IV	12	11.3	9.15	7.61	6.46	5.7	5.57	4.85	4.26	3.78	3.52	3.36	3.14	3	2.82	2.7
70	IV	12	11.5	9.29	7.73	6.57	5.7	5.36	4.93	4.34	4	3.84	3.58	3.43	3.2	2.77	
65	IV	12	11.7	9.45	8	7.12	6.69	6.11	5.77	5.31	4.43	4.12	3.93	3.66	3.5		
60	IV	12	11.8	9.6	8	6.8	6.21	5.7	5.87	5.4	5.12	4.51	4.19	4			
55	IV	12	12	9.77	8.14	7.37	6.93	6.33	5.7	5.3	5.22	4.83	4.6				
50	IV	12	11.1	9.16	8.54	7.74	7.28	6.66	6.29	5.7	5.5	5.2					
45	IV	12	11.4	9.45	8	7.99	7.51	6.88	6.5								
40	IV	12	11.2	10	9.37	8.51	7.7										

配重配置表 Kuyruk Taşları Ballast

塔身高度	平衡臂长度	4000kg	2000kg	kg
75m	20m	7	1	30000
70m	20m	7	1	28000
65m	20m	6	1	26000
60m	20m	6	1	26000
55m	20m	5	1	22000
50m	20m	5	1	22000
45m	20m	4	1	18000
40m	20m	4	1	18000

Mechanizma Özellikleri 机构特性 Specifications (Mechanisms)

Sistemler Items	Mekanizmalar Mechanism	Hız (m/min) Speed (m/min)	Kaldırma Ağırlığı (t) Hoist Weight (t)	Halat Kapasitesi (m) Rope Capacity (m)	Motor Güçleri (kw) Motor (kw)	
起升 Hoisting	70RCS30	双绳 2 fall	0-40	6	525 >525*	51.5
		0-80	3			
		四绳 4 fall	0-20	12		
		0-40	6			
	75LVF30BS	双绳 2 fall	0-40	6	525 >525* 变频调速 Frequency Control	55
		0-60	4			
		0-80	3			
		四绳 4 fall	0-20	12		
变幅 Trolleying	X120K	16-34-44			堵转力矩 Torque 120Nm	
	DVF120	0-60	变频调速 Frequency Control		堵转力矩 Torque 120Nm	
回转 Slewing	RCV185	0-0.7r/min			堵转力矩 Torque 2×185Nm	
	RVF185		变频调速 Frequency Control		堵转力矩 Torque 2×185Nm	
行走 Traveling	RT443	0-12.5-25			4×1.7/3.4	
电源 Power			380V/50Hz 380V/60Hz 440V/60Hz			

*根据用户特殊要求提供 To be supplied as per client's specific requirements *Yıldız izareti olanlar da müşterinin isteğine göre değişiklik yapılabilir