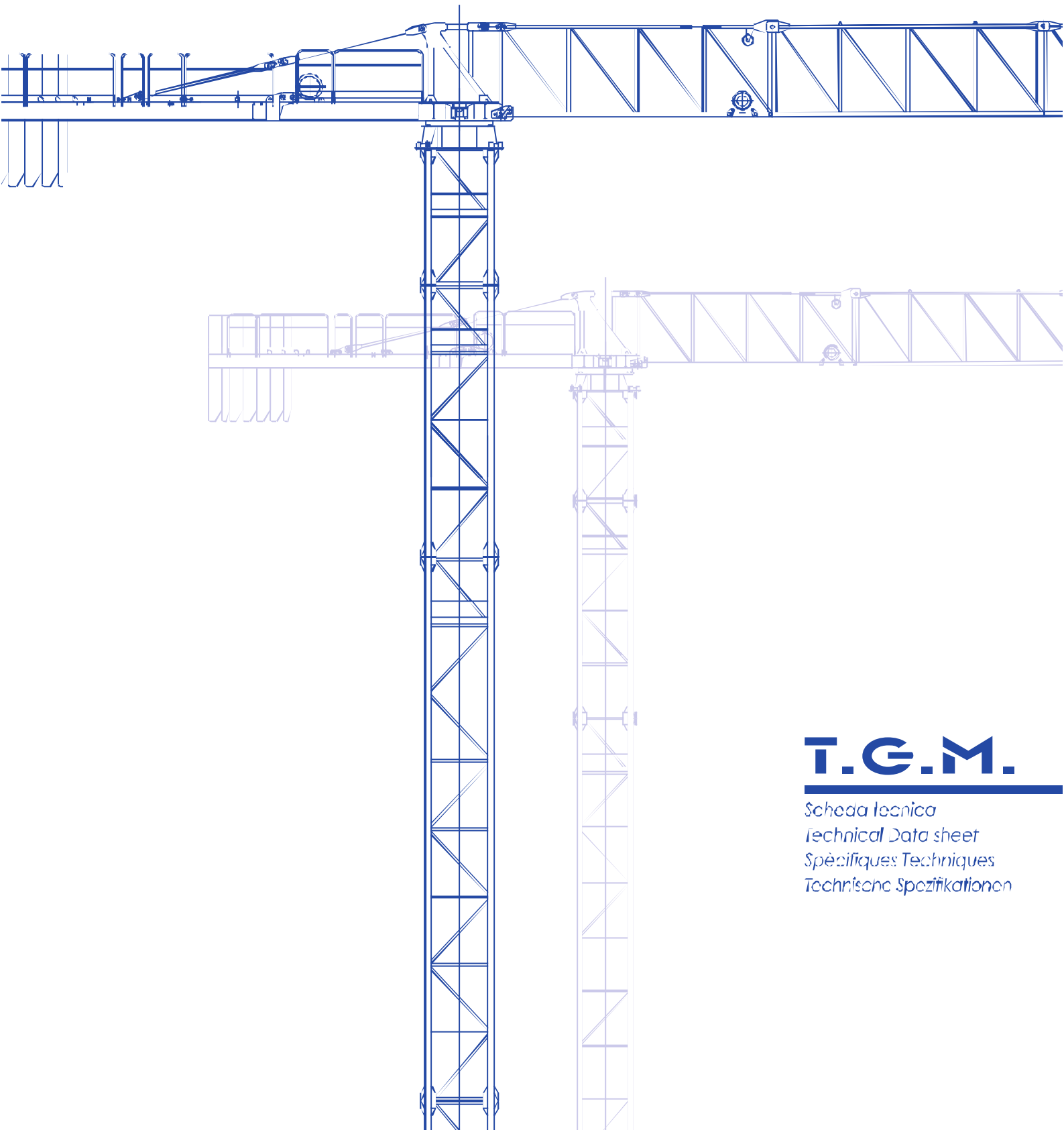




GRU A TORRE "TOPLESS"
"TOPLESS" CITY CRANE

GRT60



T.G.M.

Scheda tecnica
Technical Data sheet
Spécifiques Techniques
Technische Spezifikationen

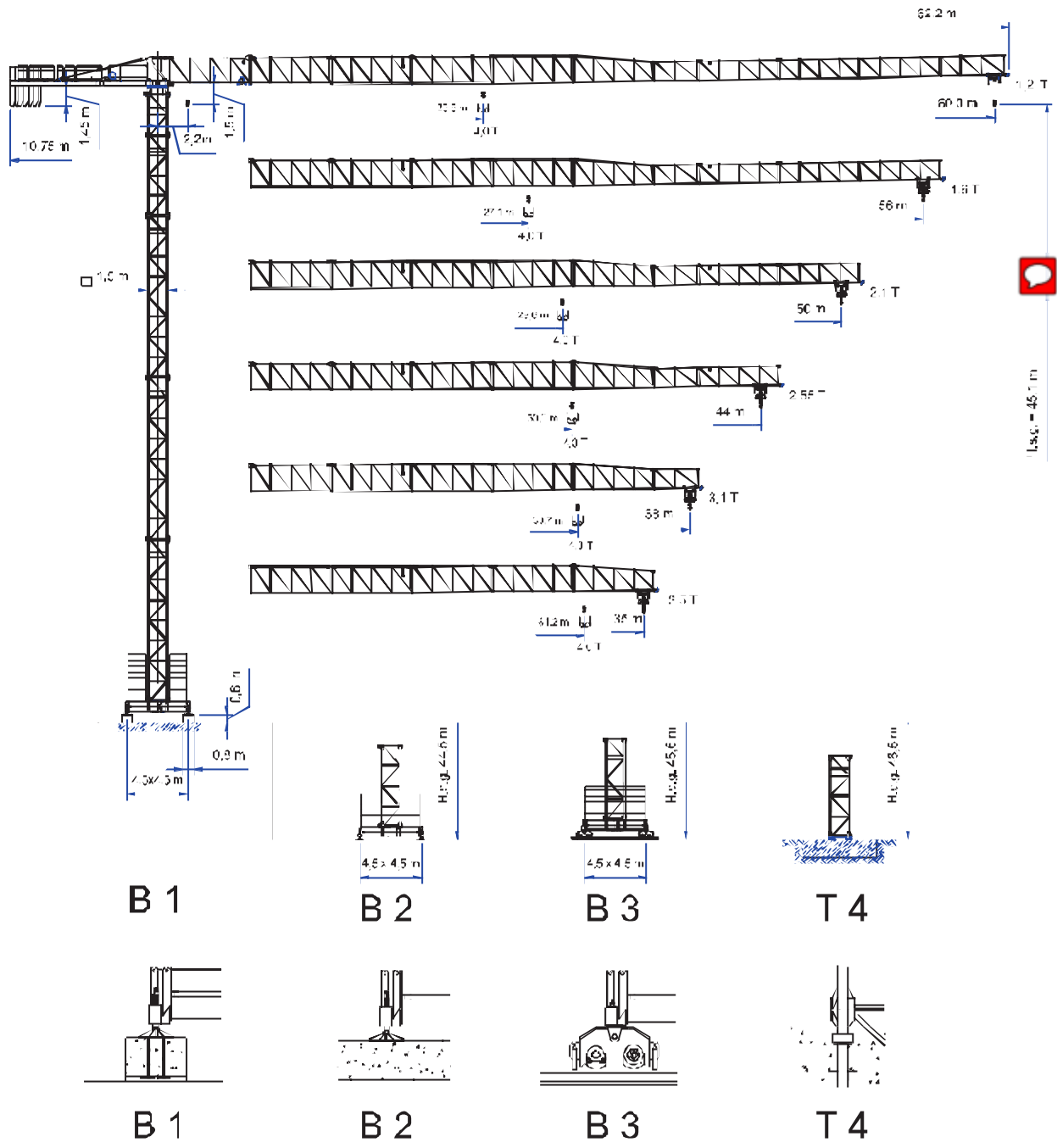


GRT60

GRU A TORRE "TOPLESS"
"TOPLESS" CITY CRANE



CE - 
FEM 1.001 A3



Disegni illustrativi non impegnativi.
Conservare la modifica senza preavviso.

Specifications and details not binding.
Subject to modification without notice.

Angaben und Details sind unverbindlich.
Änderungen vorbehalten ohne weitere Mitteilung.

Desenhos técnicos não são definitivos.
Modificações reservadas sem prévio aviso.





T.G.M.

GRU A TORRE "TOPLESS"
"TOPLESS" CITY CRANE

GRT60

CURVE DI CARICO

CARGO CURVES LOAD DIAGRAMS COURBES DE CHARGES

Tr.	Portata max - Max s.w.l. - Charge max																			bc: 4,0 t	
60	25,08	24	26	28	30	32	34	36	38	40	42	44	46	48	50	52	54	56	58	60	m.
	4,00	3,86	3,60	3,28	3,03	2,79	2,59	2,41	2,23	2,10	1,97	1,85	1,75	1,66	1,56	1,47	1,40	1,32	1,23	1,20	t
56			27,1	28	30	32	34	36	38	40	42	44	46	48	50	52	54	56	m.		
			4,01	3,84	3,54	3,27	3,04	2,83	2,65	2,49	2,34	2,20	2,08	1,96	1,86	1,77	1,68	1,50	t		
50				29,6	30	32	34	36	38	40	42	44	46	48	50	m.					
				4,00	3,93	3,61	3,39	3,16	2,96	2,78	2,62	2,47	2,33	2,21	2,10	t					
44					50,3	52	54	56	58	60	m.										
					4,00	3,75	3,49	3,26	3,06	2,87	2,70	2,55	t								
36						50,7	52	54	56	58	m.										
						4,00	3,80	3,54	3,30	3,10	t										
30							51,2	52	54	56	m.										
							4,00	3,89	3,62	3,40	t										

Tr.	Portata max - Max s.w.l. - Charge max																			8,0 t	bc: 4,0 t					
60	12,9	14	16	18	20	22	24	26	28	30	32	34	36	38	40	42	44	46	48	50	52	54	56	58	60	m.
	8,00	7,24	6,19	5,39	4,76	4,25	3,82	3,47	3,16	2,90	2,67	2,47	2,29	2,13	1,99	1,85	1,75	1,64	1,54	1,45	1,37	1,29	1,22	1,15	1,10	t
56		14,6	16	18	20	22	24	26	28	30	32	34	36	38	40	42	44	46	48	50	52	54	56	m.		
		8,00	7,19	6,27	5,55	4,98	4,47	4,07	3,72	3,42	3,15	2,92	2,72	2,54	2,38	2,23	2,09	1,97	1,86	1,76	1,66	1,58	1,50	t		
50			15,3	16	18	20	22	24	26	28	30	32	34	36	38	40	42	44	46	48	50	m.				
			8,00	7,96	6,95	6,16	5,51	4,95	4,53	4,15	3,82	3,53	3,28	3,05	2,85	2,67	2,51	2,36	2,23	2,11	2,00	t				
44				15,3	16	18	20	22	24	26	28	30	32	34	36	38	40	42	44	m.						
				8,00	7,16	6,34	5,68	5,13	4,67	4,28	3,94	3,64	3,38	3,15	2,95	2,75	2,60	2,45	t							
36					15,5	16	18	20	22	24	26	28	30	32	34	36	38	m.								
					8,00	7,26	6,41	5,76	5,21	4,74	4,34	4,00	3,70	3,41	3,20	3,00	t									
30						15,9	16	18	20	22	24	26	28	30	32	34	36	m.								
						8,00	7,42	6,58	5,89	5,32	4,85	4,44	4,09	3,79	3,52	3,40	t									



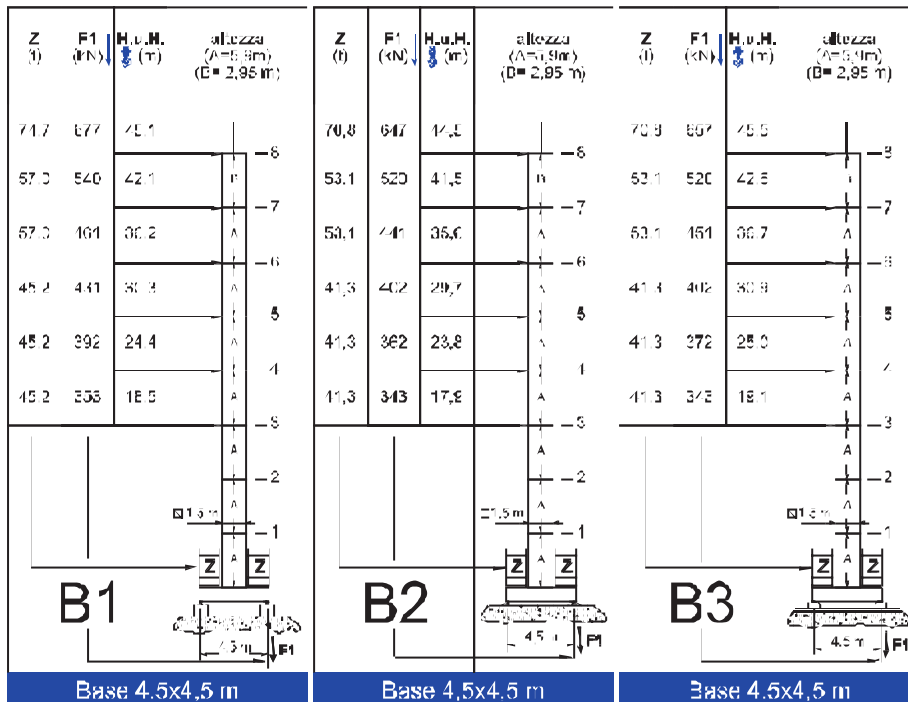
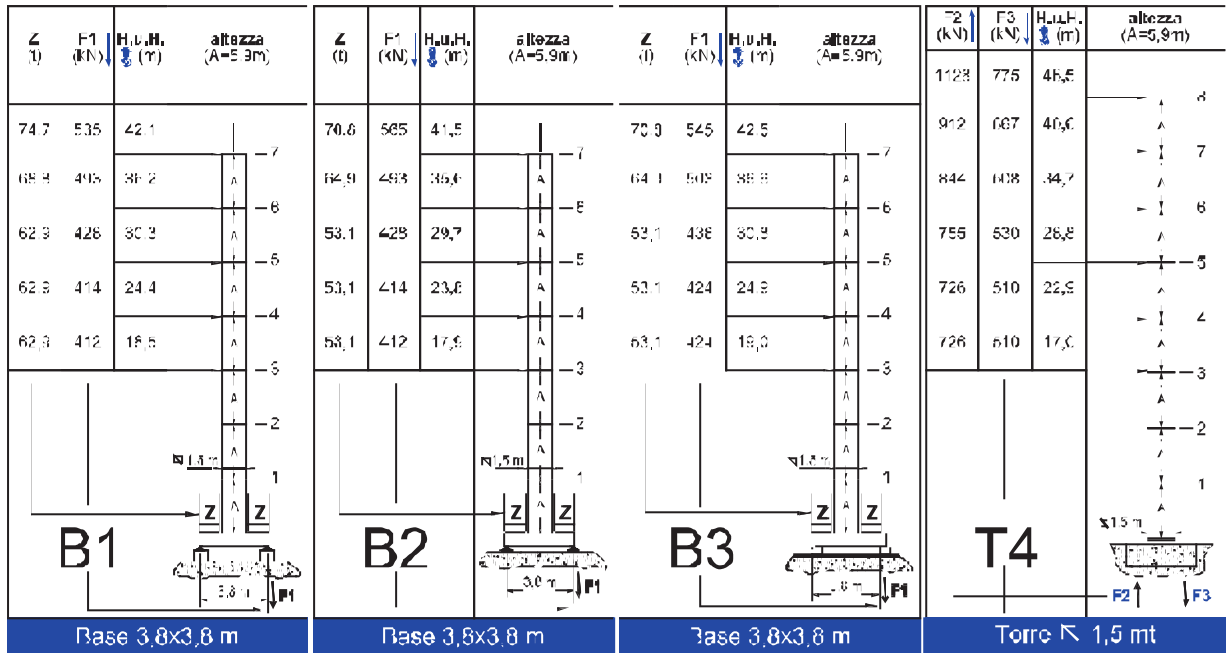
GRT60

GRU A TORRE "TOPLESS"
"TOPLESS" CITY CRANE



TORRE/REAZIONI

MAT RÉACTIONS MASTE/ECKDRÜCKE MAST/REACTIONS MÁSTIL/REACCIONES TRAMO/REACÇÕES





T.G.M.

GRU A TORRE "TOPLESS"
"TOPLESS" CITY CRANE

GRT60

MECCANISMI

MÈCANISMES ANTRIEBE MECHANISMS MECANISMOS

	r.p.m.	m/min	Nm	Kw
	0,67	-	2 x 65	-
	-	12 / 35 / 70	-	5,5
	-	16	-	2 x 4

				marcia - stop vitesc - gang				
	CV - ch PS - hp	KW				m	m/min	(t)
22 FV4 40	30	22,2	270	1	0-23	4,0	0-13	8,0
				2	0-35	3,0	0-17,5	6,0
				3	0-44	2,4	0-22	4,8
				4	0-64	1,75	0-34	3,5
30 FV4 40	40	30	100	1	0-33	4,0	0-18	8,0
				2	0-47	3,0	0-23,5	6,0
				3	0-61	2,4	0-30,5	4,8
				4	0-80	1,75	0-40	3,5
40 FV5 40	54	40	400 670* (Loccus)	1	0-41	4,0	0-2	8,0
				2	0-45	4,0	0-2,5	8,0
				3	0-62	3,0	0-31	6,0
				4	0-77	2,4	0-38,5	4,8
				5	0-100	1,75	0-50	3,5

(*)Consultateci

Potenza totale richiesta Total installed power Puissance totale nécessaire Geforderte Stromstärke Potencia necesaria	22 FV4 40 - 60 kVA	400 V - 50 Hz
	30 FV4 40 - 70 kVA	
	40 FV5 40 - 98 kVA	




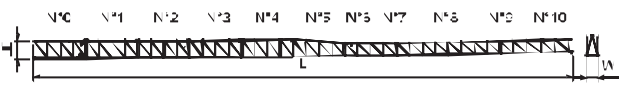
GRT60

GRU A TORRE "TOPLESS"
"TOPLESS" CITY CRANE



PESI ED INGOMBRI

PACKING LIST LISTE DE COLISAGE KOLLI-LISTE

Pos. Item	Pezzi Pieces	Denominazione Description	Stilizzo Sketch	Dimensioni Dimensions (m)			Pesi Weight (Kg)			
				L	W	H	Unit	Total		
1	1	 Elemento di freccia Jib element Élément de flèche ausleger	N° 0			6,050	1,370	2,150	*	1500
	1		N° 1			6,130	1,150	2,060	*	850
	1		N° 2			6,155	1,150	2,060	*	700
	1		N° 3			6,155	1,150	2,060	*	500
	1		N° 4			6,155	1,150	2,060	*	490
	1		N° 5			6,060	1,150	2,030	*	420
	1		N° 6			3,360	1,150	1,500	*	215
	1		N° 7			6,060	1,150	1,500	*	340
	1		N° 8			6,040	1,150	1,500	*	300
	1		N° 9			6,005	1,150	1,500	*	265
	1		N° 10			4,785	1,150	1,470	*	220
2	1	Freccia Flèche Jib Ausleger 			80 m	55,6	1,280	2,200	*	4290
					56 m	50,8	1,280	2,200	*	4170
					50 m	45,0	1,280	2,200	*	3505
					44 m	39,1	1,280	2,200	*	3605
					38 m	33,2	1,280	2,200	*	3265
					35 m	29,9	1,280	2,200	*	3050
3A	1	Cuspide, A frame, Pointe, Turmspizze.			1,65	1,21	1,73	*	695	
3B	1	Controfreccia girevole, organo di sollev., quadro elettrico Counterjib turntable, hoisting winch, electrical box etc.			5,065	1,95	2,06	*	5305	
3A+3B		Controfreccia girevole, organo di sollev., armadio elettrico. Gegenausleger, Hubwindic, Drehwerk Schaltschrank.			5,065	1,7	2,65	*	6600	
4	1	Elemento controfreccia esterno External counterjib Contreflèche extérieure Externes gegenausleger			7,215	1,135	1,470	*	1770	
5	1	Elemento di torre Tower element Élément de mât Turmstück			11,8	1,5	1,7	*	3680	
6					9,9	1,5	1,7	*	1990	
7					2,95	1,5	1,7	*	1170	
8	1	Tronchetto di fondazione Expandable foundation element Élément a sceller - Fundamentanker			1,465	1,78	1,78	*	780	

(*unit. = total)



T.G.M.

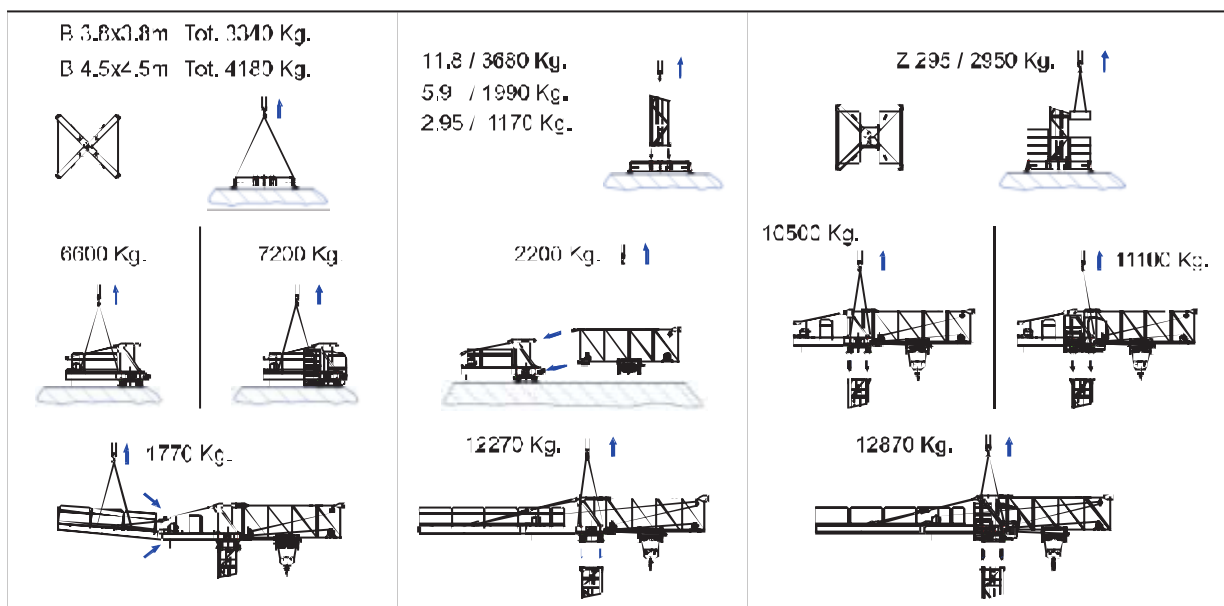
GRU A TORRE "TOPLESS"
"TOPLESS" CITY CRANE

GRT60

Pos. Item	Pezzi/Pieces	Denominazione/Description	Schizzo/Sketch	Dimensioni/Dimensions			Peso/Weight (Kg)		
				L	W	H	Unit	Total	
9	1	Trave di base principale Base main Beam Poutre de Châssis de base Hauptträger für Kreuzgelenk		4.5x4,5mt	5,530	0,710	0,760	*	2120
				3.6x3,8mt	5,535	0,710	0,760	*	1460
10	2	Semi-trave di base Half base beam Semi-poutre de châssis de base Hauptträger für Kreuzgelenk		4.5x4,5mt	3,200	0,590	0,770	1030	2060
				3.6x3,8mt	2,620	0,590	0,770	940	1880
11	2	Bilancino di traslazione folle Travel bogie Boggie folle Fahrerachse ohne motorantrieb		1,115	0,25	0,503	455	960	
12	2	Bilancino di traslazione motorizzata Driving Bogie Boggie motorisée Fahrerachse mit motorantrieb		1,115	0,59	0,503	680	1360	
13	24	Blocco di zavorra Base ballast block Lest de base Grundballastblöcke		3,600	1,200	0,600	2950	70800	
14	4	Blocco di appoggio Concrete pad Sabot en béton Betonfüß		3,600	0,800	0,600	3925	15700	
15	2	Blocchi di contropeso Counterweight block Contrepoids Gegengewichtsblöcke		A 125	3,000	0,185	1,200	1250	2500
	5			B 250	3,000	0,370	1,200	2500	12500

(*Unit = total)

MONTAGGIO





T.G.M. srl - Stabilimento:

via Piccinelli, 2

22076 Mozzate (CO) - Italy

tel. +39 0331 833580

fax +39 0331 688542

www.tgmcostruzioni.com

T.G.M.



Rev. "1" (07/06)

SOPRALZO IDRAULICO versione HC - 170

EXTERNAL CLIMBING KLETTERKRANE TELESCOPABLE

